



Waterbridge Community

The Poplar Floor Plan

The Poplar offers a pleasant open floorplan that begins with a stunning foyer entrance. A study is located as you enter on the right. Turn this space into an office or your personal sanctuary. A powder room is located nearby for visiting guests or a day at the home office. The kitchen, dining, and great room combine into one large open space that is ideal for family gatherings or just a cozy night at home. A large pantry accompanies the kitchen which offers storage and convenience. Beyond the great room, a covered porch can extend your everyday living into the outside. The Owner's suite offers a beautiful tray ceiling, an enormous walk-in closet, and a private luxurious bathroom sanctuary. Two other bedrooms, a full bathroom, and a laundry room round out this comfortable layout. Make The Poplar your home today!

*Please call our Online Sales Consultants at 843-427-0997 to learn more about this home!

\$579,900



4 Bedrooms



3.0 Bathrooms



2,204 Sq.Ft.



1 Stories



2 Car Garage

CONTACT US 757-550-2617

WWW.CESHOMES.COM



FIRST FLOOR

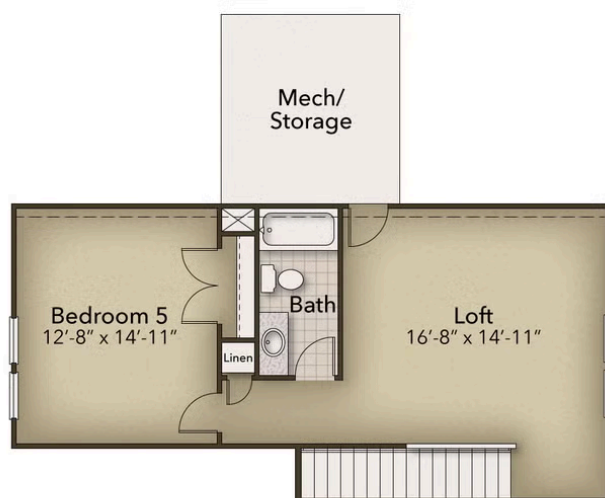


CONTACT US 757-550-2617

WWW.CHESHOMES.COM



SECOND FLOOR



CONTACT US 757-550-2617

WWW.CHESHOMES.COM



Chesapeake Homes continuously improves home designs and reserves the right to modify home features and specifications without notice or obligation. Square footage and measurements are approximate. Renderings of elevations are artist's concepts. Floor plans vary per elevation. Chesapeake Homes standard features vary by home design and location, please refer to the included features sheet for the community to define specifications. This brochure is for illustrative purposes and not part of the legal contract. Please ask Sales Associate for complete details. © 2025 Chesapeake Homes. Current information as 7th September 2025