



Waterbridge Community

The Wisteria Floor Plan

The Wisteria has plenty of downstairs living with wide-open gathering space for family meals or game night. The spacious side-load three-car garage provides beautiful curb appeal and bountiful storage space. On the first floor, a dining room is off the foyer and butler's pantry leading into the open kitchen and breakfast area. The Great Room has plenty of windows and opens into a covered rear porch for enjoying those relaxing evenings or South Carolina sunsets. There is also a bedroom and conveniently located full bathroom perfect for guests. The second floor features an enormous Owner's suite and Bath that includes a seated shower. Enjoy extra space with the Bonus Room that you can use for storage or transform into a movie room. The second and third bedrooms, along with a full bathroom and laundry room complete the second-floor living space. Make the Wisteria your home today! *Photos of Similar Home Shown*

\$839,900



4 Bedrooms



4.0 Bathrooms



3,816 Sq.Ft.



2 Stories



3 Car Garage

CONTACT US 757-550-2617

WWW.CESHOMES.COM



FIRST FLOOR

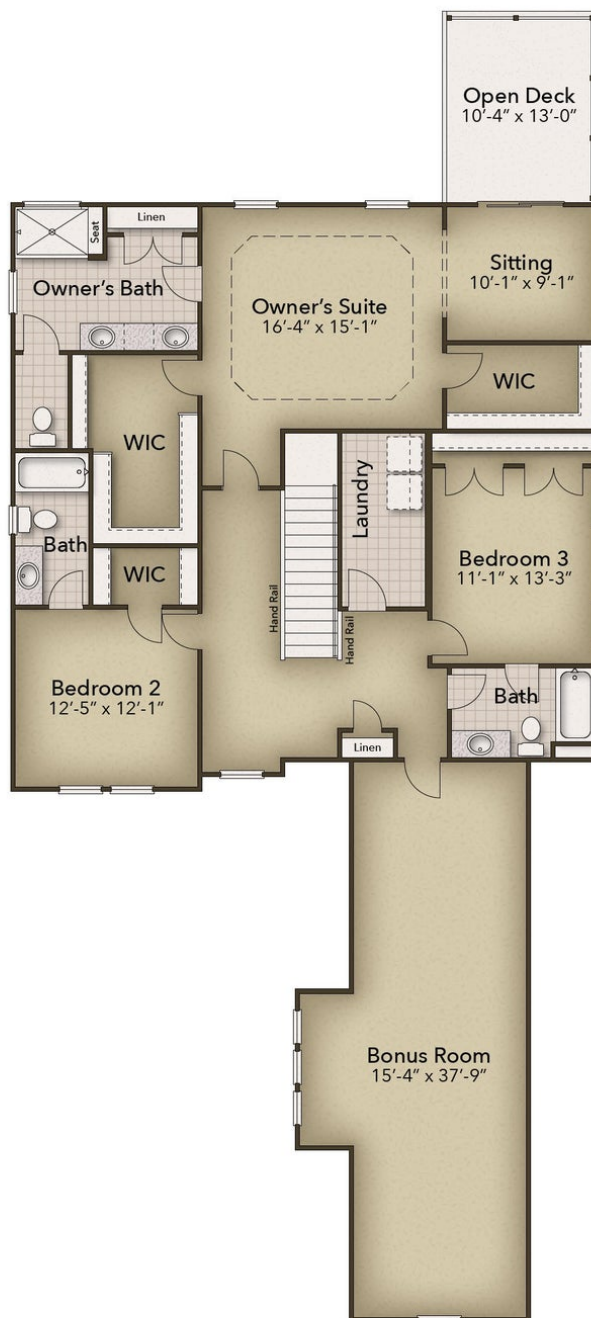


CONTACT US 757-550-2617

WWW.CESHOMES.COM



SECOND FLOOR



CONTACT US 757-550-2617

WWW.CESHOMES.COM

