



Waterbridge Community

The Newberry Floor Plan

The Newberry is the perfect balance between outdoor living space and a coastal-inspired interior, encouraging you to slip off your Flip Flops and relax. Starting at 1,918 square feet, this model offers up to four bedrooms, three bathrooms, and an optional second floor with a loft, 4th bedroom, and bath. Step in from the Newberry's covered front porch to find an open kitchen, dining, and great room area. Breeze through sliding glass doors onto a 179 square foot covered porch, ideal for warm summer evenings or afternoon get-togethers. To personalize this space, choose from a wide range of options, including a gourmet island, tray ceiling, wall ovens, and optional fireplace locations. Whether you're looking for an abundance of counter space, added seating, or a more intimate gathering area, this model's options will serve as the solution. Through the foyer, you'll find a drop zone and laundry area with options for a soaking sink, additional shelving, and a bench for seating while you unload beach accessories or sand-filled clothes. Drop-off beach chairs in the convenient storage space just inside the garage, as well. Across from the drop zone, either add French ...



3 Bedrooms



2.0 Bathrooms



1,918 Sq.Ft.



1 Stories



2 Car Garage

CONTACT US 757-550-2617

WWW.CHESHOMES.COM



Chesapeake Homes continuously improves home designs and reserves the right to modify home features and specifications without notice or obligation. Square footage and measurements are approximate. Renderings of elevations are artist's concepts. Floor plans vary per elevation. Chesapeake Homes standard features vary by home design and location, please refer to the included features sheet for the community to define specifications. This brochure is for illustrative purposes and not part of the legal contract. Please ask Sales Associate for complete details. © 2025 Chesapeake Homes. Current information as 3rd July 2025

FIRST FLOOR



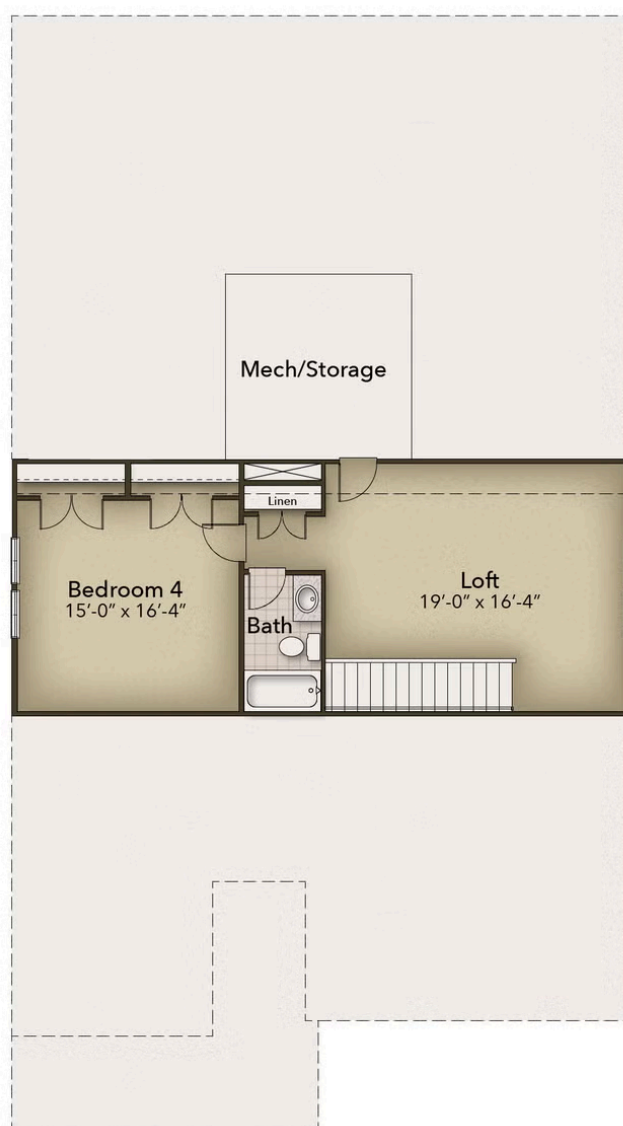
CONTACT US 757-550-2617

WWW.CHESHOMES.COM



Chesapeake Homes continuously improves home designs and reserves the right to modify home features and specifications without notice or obligation. Square footage and measurements are approximate. Renderings of elevations are artist's concepts. Floor plans vary per elevation. Chesapeake Homes standard features vary by home design and location, please refer to the included features sheet for the community to define specifications. This brochure is for illustrative purposes and not part of the legal contract. Please ask Sales Associate for complete details. © 2025 Chesapeake Homes. Current information as 3rd July 2025

SECOND FLOOR



CONTACT US 757-550-2617

WWW.CHESHOMES.COM



Chesapeake Homes continuously improves home designs and reserves the right to modify home features and specifications without notice or obligation. Square footage and measurements are approximate. Renderings of elevations are artist's concepts. Floor plans vary per elevation. Chesapeake Homes standard features vary by home design and location, please refer to the included features sheet for the community to define specifications. This brochure is for illustrative purposes and not part of the legal contract. Please ask Sales Associate for complete details. © 2025 Chesapeake Homes. Current information as 3rd July 2025