



Waterbridge Community

The Poplar Floor Plan

The Poplar offers a pleasant open floorplan that begins with a stunning foyer entrance. A study is located as you enter on the right. Turn this space into an office or your personal sanctuary. A powder room is located nearby for visiting guests or a day at the home office. The kitchen, dining, and great room combine into one large open space that is ideal for family gatherings or just a cozy night at home. A large pantry accompanies the kitchen which offers storage and convenience. Beyond the great room, a covered porch can extend your everyday living into the outside. The Owner's suite offers a beautiful tray ceiling, an enormous walk-in closet, and a private luxurious bathroom sanctuary. Two other bedrooms, a full bathroom, and a laundry room round out this comfortable layout. The second floor offers an additional bedroom, bedroom and loft area for your guests to enjoy and have their own getaway. Make The Poplar your home today! *Please call our Online Sales Consultants at 843-427-0997 to learn more about this home!

\$744,735



4 Bedrooms



3.5 Bathrooms



2,204 Sq.Ft.



2 Stories



2 Car Garage

CONTACT US 757-550-2617

WWW.CESHOMES.COM

FIRST FLOOR

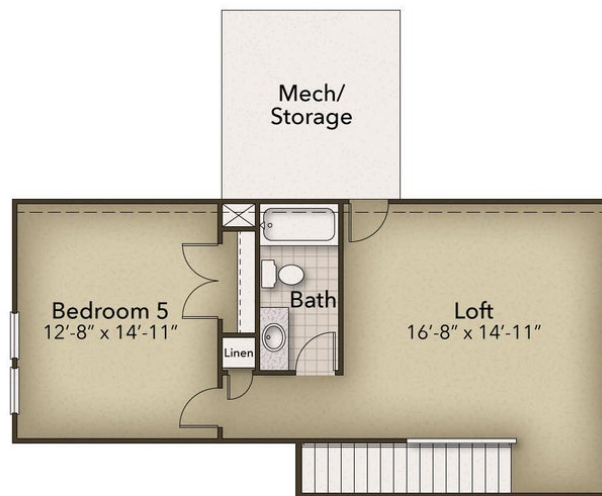


CONTACT US 757-550-2617

WWW.CESHOMES.COM



SECOND FLOOR



CONTACT US 757-550-2617

WWW.CESHOMES.COM

