

From \$509,900

Welcome to The Beech, with just over 2,000 square feet of living at Waterbridge! Enter through the front door from your covered porch to find a foyer with two first-floor bedrooms and a bathroom tucked away. You will find a drop zone to the left, perfect for entering through your garage and tossing your belongings after a long day. The laundry room is perfectly hidden in your drop zone area. Venture through to find a wide-open floor plan in the main living area. The kitchen is complete with a separate island as well as a huge walk-in pantry for all of your storage needs, while the dining and living room creates the perfect space for entertaining, with its prime location near the kitchen. The first-floor Owner's Suite makes this home ideal for main-level living. With included tray ceilings to add a touch of class, this space consists of two closets AND a linen closet to ensure space for all of your items. The Owner's Bath has a beautiful shower with a seat and double bowl vanities to make your time spent in there feel like a day at the spa. When ...

 **3 Bedrooms**

 **2.0 Bathrooms**

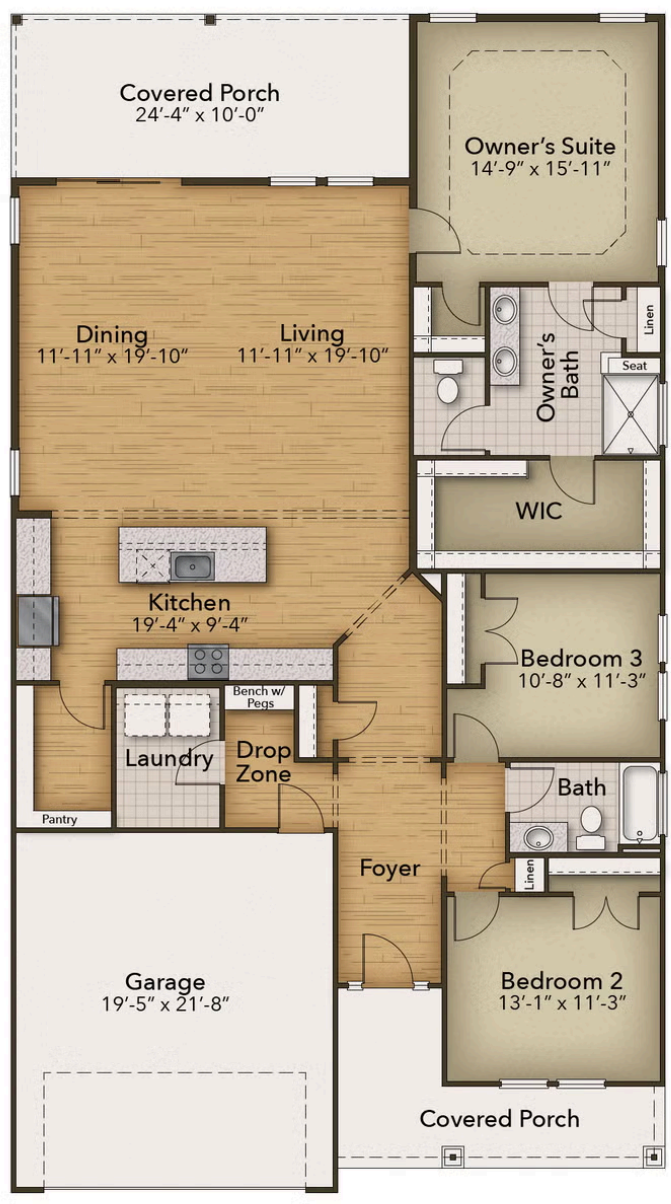
 **2,030 Sq.Ft.**

 **1 Stories**

 **2 Car Garage**

CONTACT US 757-550-2617
WWW.CESHOMES.COM

FIRST FLOOR



CONTACT US 757-550-2617

WWW.CHESHOMES.COM