



Haven at Centerville Community

The Barnes Floor Plan

How can you be living large in a ranch-style home you may ask.... The answer is THE BARNES! This layout offers 3,270 square feet of home all spaciouly arranged around a central great room. In an open-concept design, the great room is attached to the kitchen and the breakfast nook all separated by a large island . With three bedrooms, three full bathrooms, and a combination Drop Zone and Laundry room, this home is created with your comfort and space in mind. The Owner's Suite is equipped with all the must-have features, including a deluxe bathroom with a double vanity, as well as a shower and seperate bathroom, and a huge walk-in closet. Before you retire for the night to the Owner's Suite, enjoy the day by spending it on the charming covered front porch or kicking up your feet on the relaxing covered back porch. Create the home of your dreams with The Barnes. *Structural features are selected for this home. Interior design selections are yours to choose, with the opportunity to visit...

\$717,605



4 Bedrooms



3.0 Bathrooms



3,270 Sq.Ft.



2 Stories



2 Car Garage

CONTACT US 757-550-2617

WWW.CESHOMES.COM



FIRST FLOOR



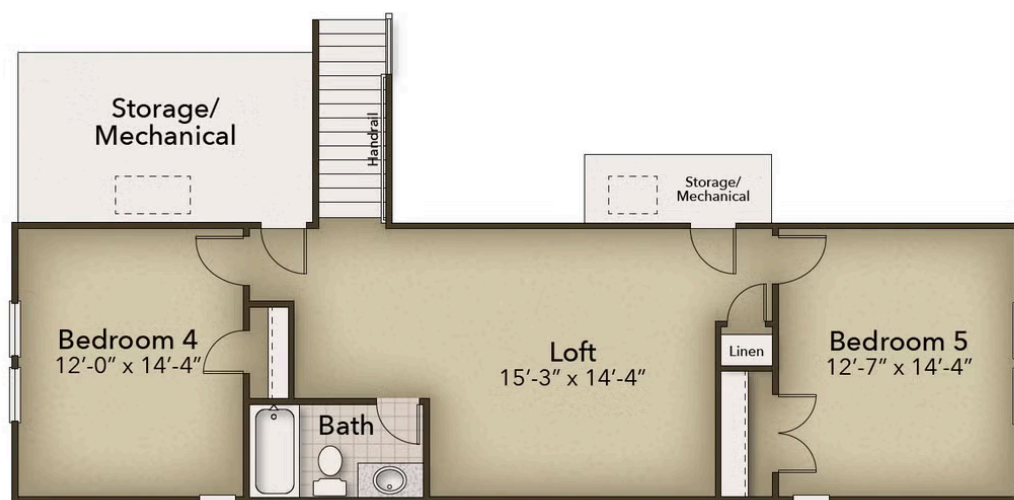
CONTACT US 757-550-2617

WWW.CESHOMES.COM



Chesapeake Homes continuously improves home designs and reserves the right to modify home features and specifications without notice or obligation. Square footage and measurements are approximate. Renderings of elevations are artist's concepts. Floor plans vary per elevation. Chesapeake Homes standard features vary by home design and location, please refer to the included features sheet for the community to define specifications. This brochure is for illustrative purposes and not part of the legal contract. Please ask Sales Associate for complete details. © 2026 Chesapeake Homes. Current information as 12th January 2026

SECOND FLOOR



CONTACT US 757-550-2617

WWW.CHESHOMES.COM



Chesapeake Homes continuously improves home designs and reserves the right to modify home features and specifications without notice or obligation. Square footage and measurements are approximate. Renderings of elevations are artist's concepts. Floor plans vary per elevation. Chesapeake Homes standard features vary by home design and location, please refer to the included features sheet for the community to define specifications. This brochure is for illustrative purposes and not part of the legal contract. Please ask Sales Associate for complete details. © 2026 Chesapeake Homes. Current information as 12th January 2026