



## Haven at Centerville Community

### The Everest Floor Plan

The Everest floor plan lives up to its name, allowing every member of the family to experience spacious living. This prominent 3,351-square-foot home gives you an open-concept living area. It includes a great room connected to the kitchen, which includes a large island and a roomy pantry to the side. Just past the pantry is a separate dining room that can be used and personalized to your lifestyle.. A guest suite and full bathroom are found on the first floor right past the Drop Zone located at the garage door. The great room is even more cozy with the added electric fireplace. Upstairs you can find the additional 4 bedrooms, which include the Owner's Suite styled with grand tray ceilings. This substantial owner's suite features two prominent walk-in closets, an attached deluxe bathroom with a double sink vanity, and a shower and bathtub setup (perfect for a quick morning shower or a relaxing bubble bath at night). For your convenience, the laundry room is located right outside the Owner's Suite. A need for more closet space though? No problem each of the additional rooms has its own walk-in closets. The ...

**\$733,900**



5 Bedrooms



3.0 Bathrooms



3,351 Sq.Ft.



2 Stories



2 Car Garage

**CONTACT US 757-550-2617**

**WWW.CESHOMES.COM**

**FIRST FLOOR**

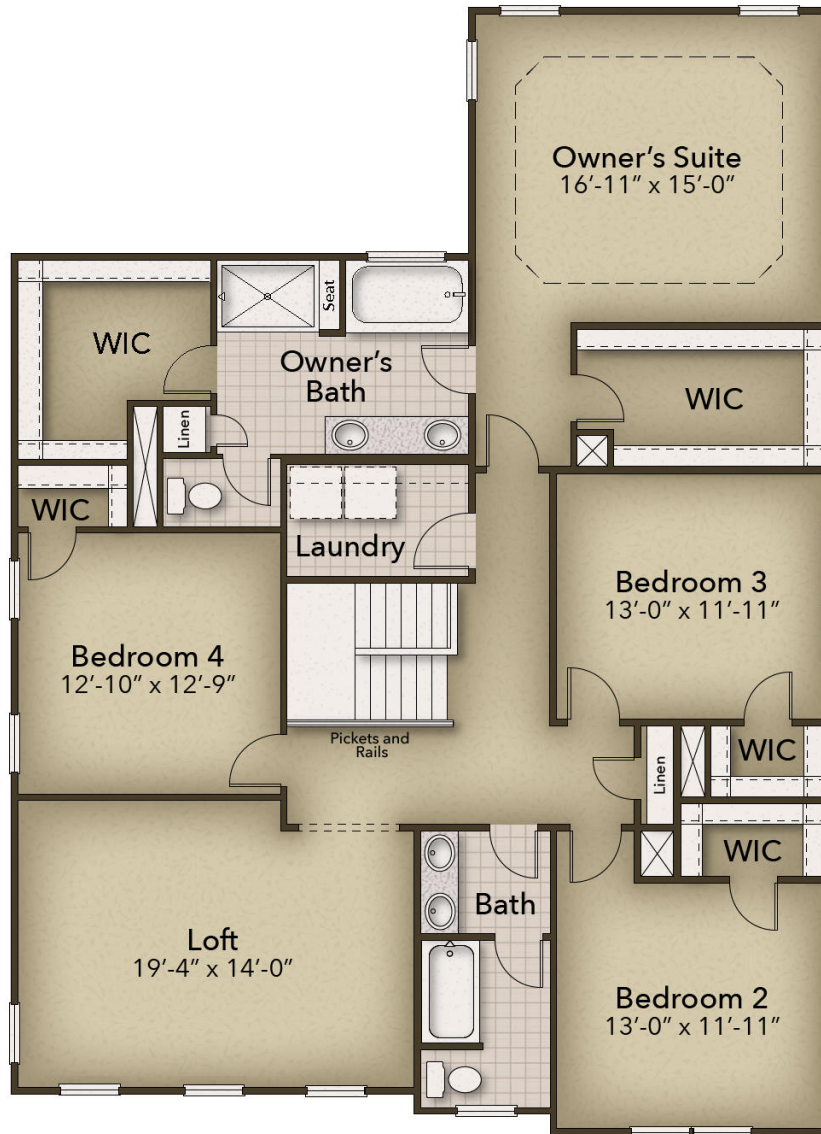


**CONTACT US 757-550-2617**

**WWW.CESHOMES.COM**



## SECOND FLOOR



**CONTACT US 757-550-2617**

**WWW.CESHOMES.COM**

