



Haven at Centerville Community

The Iris Floor Plan

How can you be living large in a single-level home you may ask.... The answer is THE IRIS! This layout offers 2,470 square feet of home all spaciouly arranged around a central great room. In an open-concept design, the great room is attached to the kitchen and the breakfast nook all separated by a large island with upgrades to a gourmet kitchen layout that includes double ovens. With three bedrooms, two full bathrooms, and a combination Drop Zone and Laundry room, this home is created with your comfort and space in mind. Love entertaining and this layout, but you are looking for more space... no worries, an extended breakfast nook, a butler's pantry, a three-car garage, or even a second floor are all options with The Iris. The Owner's Suite is equipped with all the must-have features, such as a ...

\$757,900



4 Bedrooms



3.0 Bathrooms



3,270 Sq.Ft.



2 Stories



2 Car Garage

CONTACT US 757-550-2617

WWW.CESHOMES.COM



FIRST FLOOR

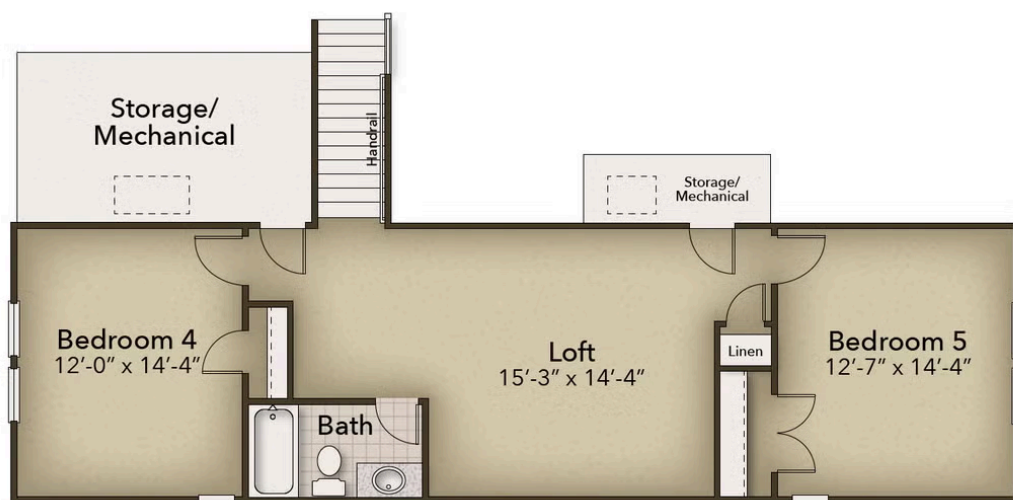


CONTACT US 757-550-2617

WWW.CHESHOMES.COM



SECOND FLOOR



CONTACT US 757-550-2617

WWW.CHESHOMES.COM



Chesapeake Homes continuously improves home designs and reserves the right to modify home features and specifications without notice or obligation. Square footage and measurements are approximate. Renderings of elevations are artist's concepts. Floor plans vary per elevation. Chesapeake Homes standard features vary by home design and location, please refer to the included features sheet for the community to define specifications. This brochure is for illustrative purposes and not part of the legal contract. Please ask Sales Associate for complete details. © 2025 Chesapeake Homes. Current information as 3rd July 2025