



Haven at Centerville Community

The Roseleigh Floor Plan

The Roseleigh is a buyer favorite for a reason! The spacious 3,284 square feet holds space for six bedrooms and up to four full bathrooms (depending on the layout you choose). Once you walk in the door the main foyer divides the formal dining room from the study. Continue down the hall to the open-concept kitchen, great room, and breakfast nook with access to the back patio. An optional extended breakfast area with an alternate kitchen layout that features a large food pantry and butler's pantry is available. Or if you want more natural light you can add an attached sunroom that connects to the patio. Additionally on the first floor is the guest suite and bathroom, the drop zone bench, and the garage access door. This guest suite does have the option to be upgraded to a multi-gen room with a bedroom, full bath, and additional living space. The spacious second level makes sure everyone in your family has their own place. To the left of this floor are three bedrooms, two full baths, and the laundry room with optional counter space and sink. To the right by the ...

\$764,900



5 Bedrooms



4.0 Bathrooms



3,333 Sq.Ft.



2 Stories



2 Car Garage

CONTACT US 757-550-2617

WWW.CESHOMES.COM



Chesapeake Homes continuously improves home designs and reserves the right to modify home features and specifications without notice or obligation. Square footage and measurements are approximate. Renderings of elevations are artist's concepts. Floor plans vary per elevation. Chesapeake Homes standard features vary by home design and location, please refer to the included features sheet for the community to define specifications. This brochure is for illustrative purposes and not part of the legal contract. Please ask Sales Associate for complete details. © 2025 Chesapeake Homes. Current information as 3rd July 2025

FIRST FLOOR



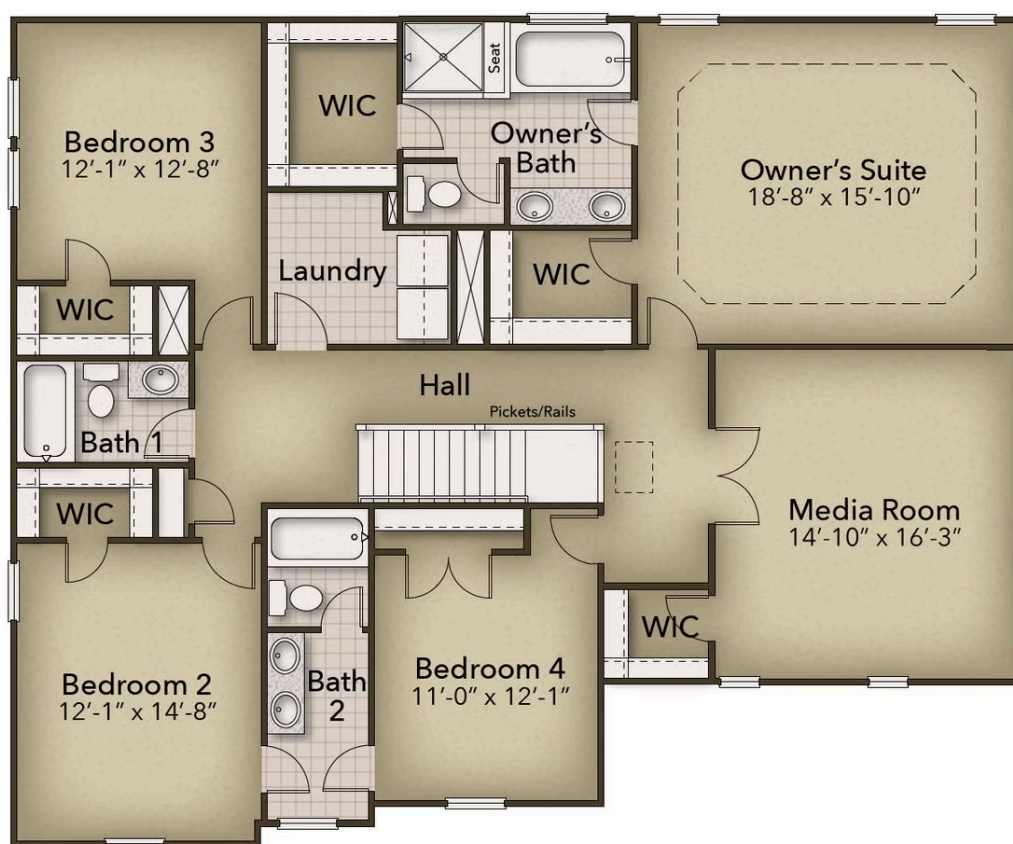
CONTACT US 757-550-2617

WWW.CHESHOMES.COM



Chesapeake Homes continuously improves home designs and reserves the right to modify home features and specifications without notice or obligation. Square footage and measurements are approximate. Renderings of elevations are artist's concepts. Floor plans vary per elevation. Chesapeake Homes standard features vary by home design and location, please refer to the included features sheet for the community to define specifications. This brochure is for illustrative purposes and not part of the legal contract. Please ask Sales Associate for complete details. © 2025 Chesapeake Homes. Current information as 3rd July 2025

SECOND FLOOR



CONTACT US 757-550-2617

WWW.CHESHOMES.COM

