



From \$634,900

The Everest floor plan lives up to its name, allowing every member of the family to experience spacious living. This prominent 3,351-square-foot home gives you an open-concept living area. It includes a great room connected to the kitchen, which includes a large island and a roomy pantry to the side. Just past the pantry is a separate dining room that can be used and personalized to your lifestyle. Add a sliding barn door to the kitchen/dining entrance and double ovens to take your hosting up a notch. A guest suite and powder room are found on the first floor right past the Drop Zone located at the garage door. A full bathroom option is available for this layout, instead of the powder room. Additional available options can make this layout extra special with items such as a fireplace, butler's pantry, or third-car garage. Upstairs you can find the additional 4 bedrooms, which include the Owner's Suite styled with grand tray ceilings. This substantial owner's suite features two prominent walk-in closets, an attached bathroom with a double sink vanity, and a shower and bathtub setup (perfect for a quick morning shower ...



5 Bedrooms



2.5 Bathrooms



3,351 Sq.Ft.



2 Stories



2 Car Garage

CONTACT US 757-550-2617

WWW.CESHOMES.COM



FIRST FLOOR

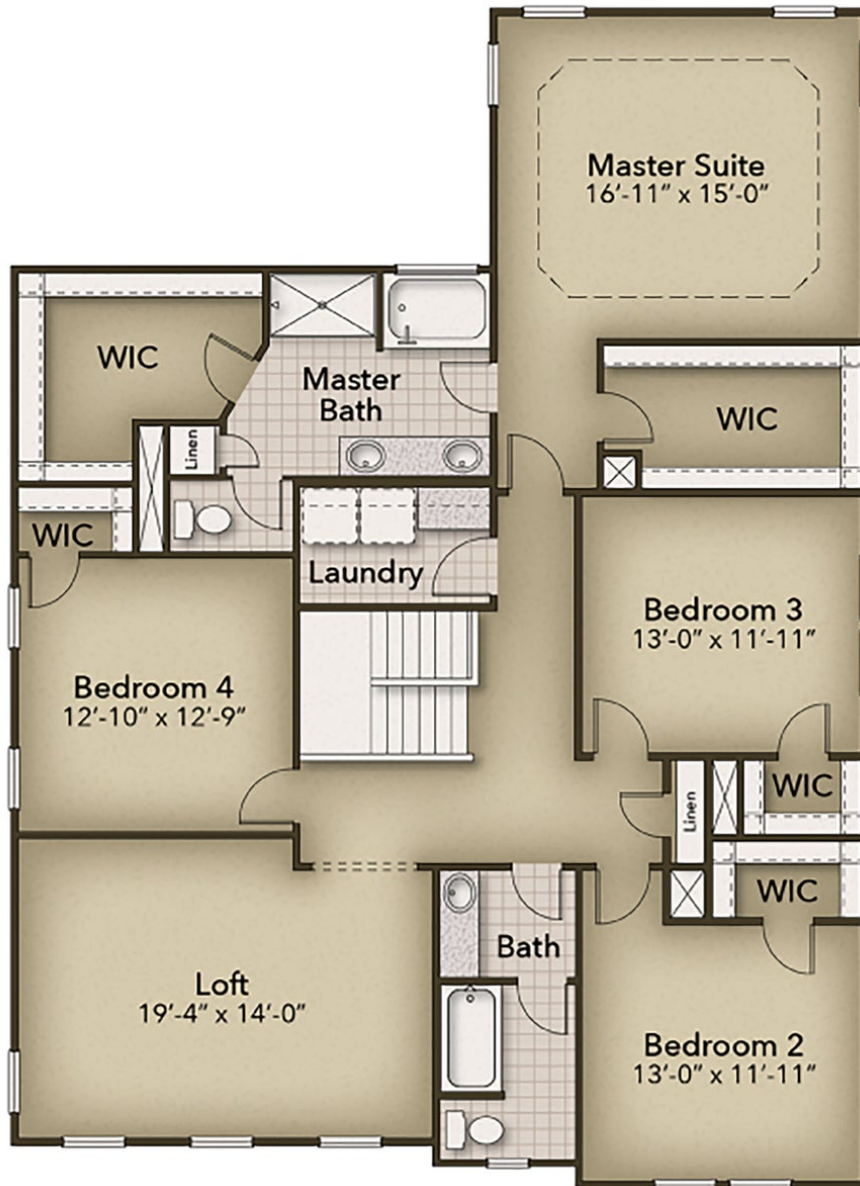


CONTACT US 757-550-2617

WWW.CESHOMES.COM



SECOND FLOOR



CONTACT US 757-550-2617

WWW.CESHOMES.COM



OPTIONS



Sideload Garage



Three Car Garage



Gourmet Kitchen



Deluxe Owner's Bath

CONTACT US 757-550-2617

WWW.CESHOMES.COM

