



Enter the beautiful Bennett Model from your covered front porch and take in the open-space floorplan. The Bennett features a large great room that can be upgraded to feature stunning coffered ceilings. While kicking back and relaxing in your new great room, that favorite snack isn't far away as the kitchen blends into the floorplan allowing for daily function. A beautiful island separates the kitchen, dining area, and drop zone from the other half of the first floor. Plus, for those who love to cook or bake, this kitchen can be upgraded to feature a gourmet kitchen island as well as a gourmet kitchen layout. But the first floor of The Bennett doesn't stop there! With the owner's suite located on this level, your day-to-day tasks have never been this easy, especially with the easy access flow of bedroom to bathroom to laundry room. Plus you will fall in love with the huge walk-in closet connected to the owner's bathroom. Lastly, on the first floor, The Bennett features an additional bedroom with a private full bath attached. Perfect for when guests from out of town need a place to stay. Or ...



5 Bedrooms



3.5 Bathrooms



3,381 Sq.Ft.



2 Stories



2 Car Garage

CONTACT US 757-550-2617

WWW.CESHOMES.COM



Chesapeake Homes continuously improves home designs and reserves the right to modify home features and specifications without notice or obligation. Square footage and measurements are approximate. Renderings of elevations are artist's concepts. Floor plans vary per elevation. Chesapeake Homes standard features vary by home design and location, please refer to the included features sheet for the community to define specifications. This brochure is for illustrative purposes and not part of the legal contract. Please ask Sales Associate for complete details. © 2026 Chesapeake Homes. Current information as 11th April 2026

FIRST FLOOR

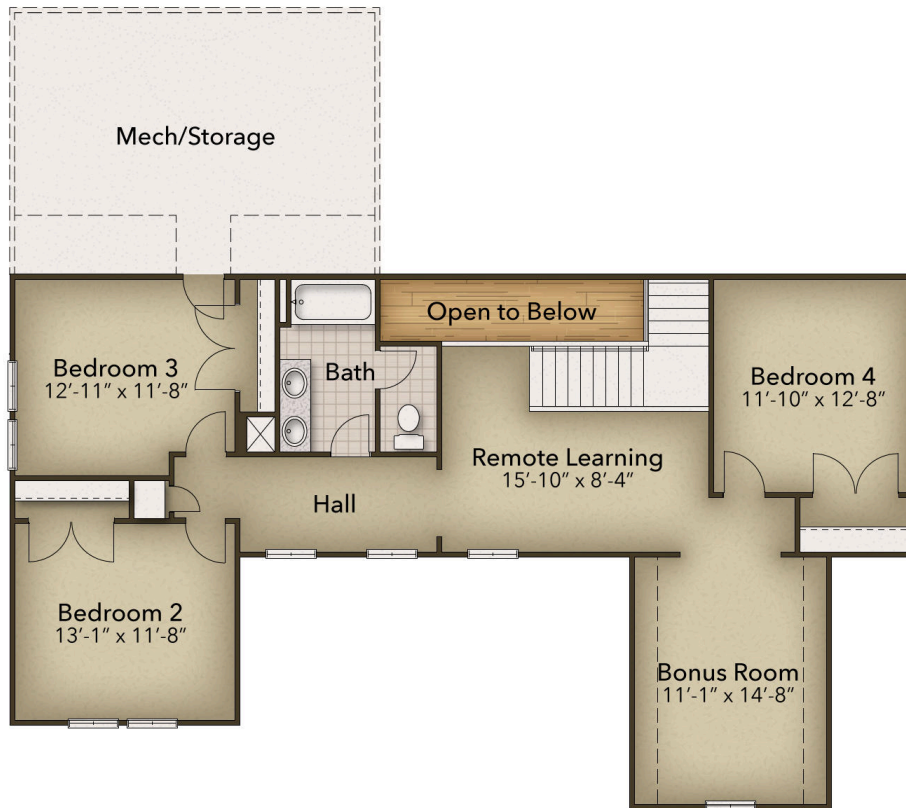


CONTACT US 757-550-2617

WWW.CESHOMES.COM



SECOND FLOOR



CONTACT US 757-550-2617

WWW.CESHOMES.COM

