



The Currant is a beautifully balanced home that blends comfort and flexibility, offering 2,235 square feet with three to four bedrooms. Step into the welcoming foyer that opens to a formal dining area, which can easily be transformed into a private study with double doors, if you prefer a dedicated workspace. From there, the home flows naturally into the open living area, where the kitchen and great room connect effortlessly. Elevate your kitchen with the gourmet configuration featuring double ovens or enhance your island with the gourmet island upgrade for an even more striking centerpiece. Upstairs, you'll find a spacious open loft that can serve as a flexible second living space, playroom, or be converted into a fourth bedroom. The owner's suite is a real escape, complete ...



3 Bedrooms



2.5 Bathrooms



2,235 Sq.Ft.



2 Stories



2 Car Garage

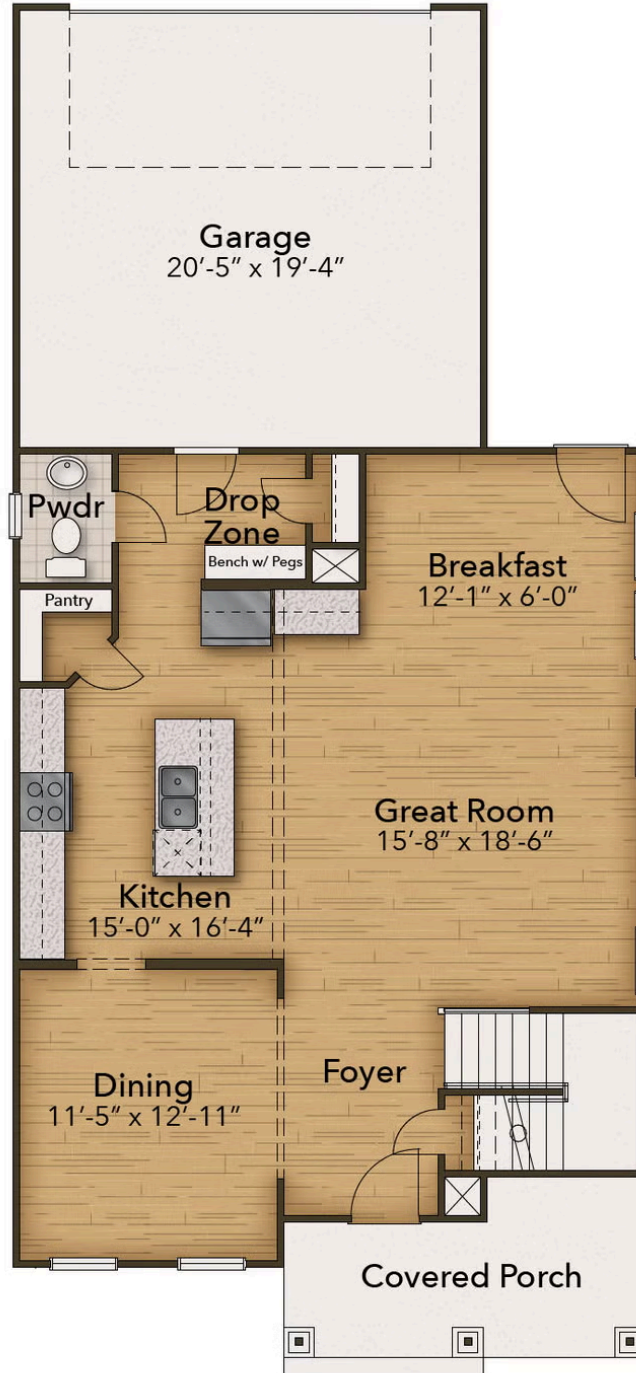
CONTACT US 757-550-2617

WWW.CESHOMES.COM



Chesapeake Homes continuously improves home designs and reserves the right to modify home features and specifications without notice or obligation. Square footage and measurements are approximate. Renderings of elevations are artist's concepts. Floor plans vary per elevation. Chesapeake Homes standard features vary by home design and location, please refer to the included features sheet for the community to define specifications. This brochure is for illustrative purposes and not part of the legal contract. Please ask Sales Associate for complete details. © 2026 Chesapeake Homes. Current information as 14th May 2026

## FIRST FLOOR



CONTACT US 757-550-2617

WWW.CESHOMES.COM



## SECOND FLOOR



CONTACT US 757-550-2617

WWW.CESHOMES.COM

