



The Freesia is an expansive and thoughtfully designed rear-load home that offers four bedrooms and 4,102 square feet. Enter from the covered front porch, and you're welcomed by a private office with elegant double doors. As you continue, the space opens into a beautifully connected living area where the great room, dining area, and kitchen flow together around a central island. For those who love to cook, consider upgrading to the gourmet island for added counter space, storage, and functionality. Just off the great room is your grand owner's suite, leading into a spa-inspired bath with a wall-to-wall dual-sink vanity and a large walk-in shower, with the option to enhance further with a built-in shower bench. Finishing the first floor is a secondary guest suite, a full bathroom, a convenient laundry room, and a well-placed mudroom off the garage entrance.



**5 Bedrooms**



**4.0 Bathrooms**



**4,102 Sq.Ft.**



**2 Stories**



**2 Car Garage**

**CONTACT US 757-550-2617**

**WWW.CESHOMES.COM**



Chesapeake Homes continuously improves home designs and reserves the right to modify home features and specifications without notice or obligation. Square footage and measurements are approximate. Renderings of elevations are artist's concepts. Floor plans vary per elevation. Chesapeake Homes standard features vary by home design and location, please refer to the included features sheet for the community to define specifications. This brochure is for illustrative purposes and not part of the legal contract. Please ask Sales Associate for complete details. © 2026 Chesapeake Homes. Current information as 24th April 2026

**FIRST FLOOR**

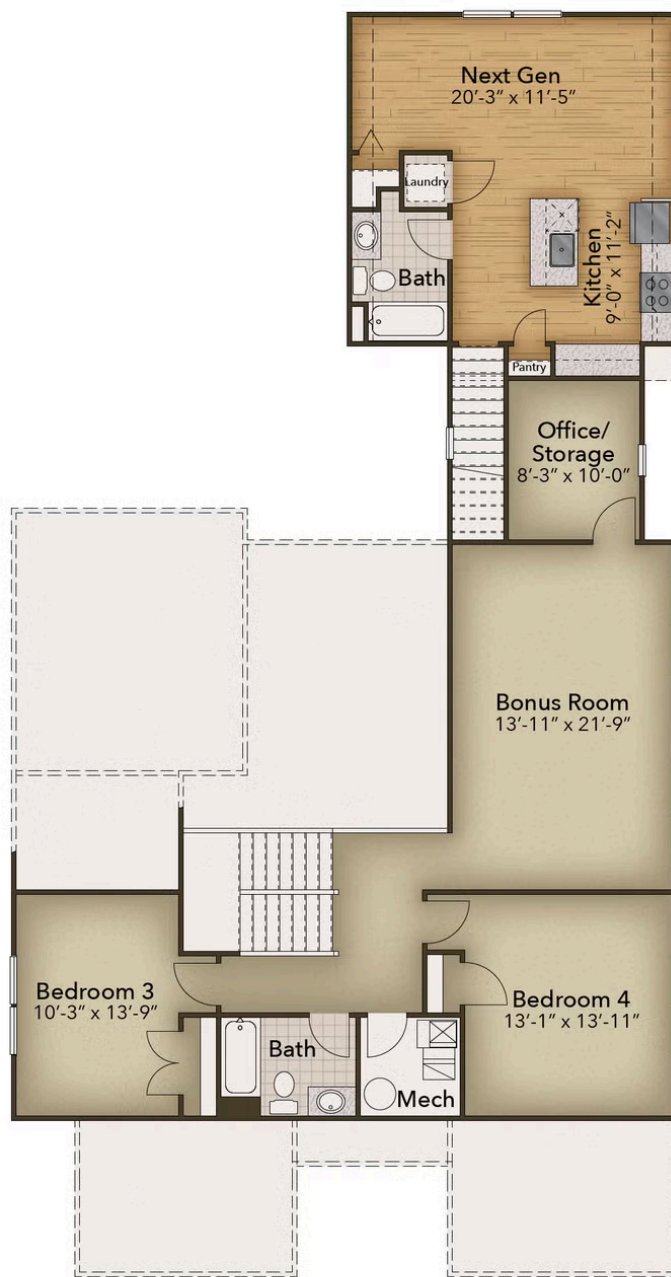


CONTACT US 757-550-2617

WWW.CESHOMES.COM



## SECOND FLOOR



CONTACT US 757-550-2617

WWW.CESHOMES.COM

