



The Marigold is a thoughtfully designed rear-load home that blends convenience, elegance, and flexible living. With 3,263+ square feet, this plan offers three to four bedrooms to fit your needs. Upon entry, a dining area with optional coffered ceilings leads you into the open kitchen and great room with tray ceilings. Elevate your kitchen with a upgraded gourmet island. Enjoy a first floor owner's suite with tray ceilings, a spacious walk-in closet, and a spa-inspired bath with two deluxe upgrade options. The first floor also includes a secondary bedroom, full bath, and laundry room for added convenience. Upstairs, an open loft provides flexible space that can be converted into a fourth bedroom with its own full bath. You'll also find an additional bedroom, hall bath, and a versatile bonus room ready to become whatever you need most.



5 Bedrooms



3.0 Bathrooms



2,129 Sq.Ft.



2 Stories



2 Car Garage

CONTACT US 757-550-2617

WWW.CESHOMES.COM



Chesapeake Homes continuously improves home designs and reserves the right to modify home features and specifications without notice or obligation. Square footage and measurements are approximate. Renderings of elevations are artist's concepts. Floor plans vary per elevation. Chesapeake Homes standard features vary by home design and location, please refer to the included features sheet for the community to define specifications. This brochure is for illustrative purposes and not part of the legal contract. Please ask Sales Associate for complete details. © 2026 Chesapeake Homes. Current information as 20th February 2026

FIRST FLOOR



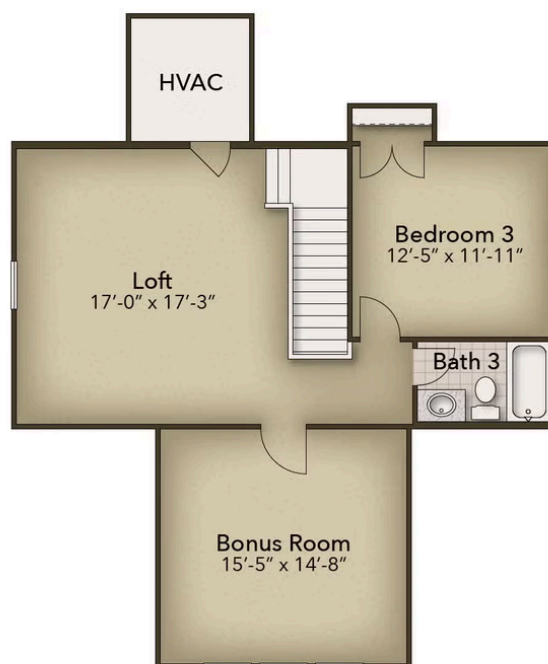
CONTACT US 757-550-2617

WWW.CHESHOMES.COM



Chesapeake Homes continuously improves home designs and reserves the right to modify home features and specifications without notice or obligation. Square footage and measurements are approximate. Renderings of elevations are artist's concepts. Floor plans vary per elevation. Chesapeake Homes standard features vary by home design and location, please refer to the included features sheet for the community to define specifications. This brochure is for illustrative purposes and not part of the legal contract. Please ask Sales Associate for complete details. © 2026 Chesapeake Homes. Current information as 20th February 2026

SECOND FLOOR



CONTACT US 757-550-2617

WWW.CESHOMES.COM



Chesapeake Homes continuously improves home designs and reserves the right to modify home features and specifications without notice or obligation. Square footage and measurements are approximate. Renderings of elevations are artist's concepts. Floor plans vary per elevation. Chesapeake Homes standard features vary by home design and location, please refer to the included features sheet for the community to define specifications. This brochure is for illustrative purposes and not part of the legal contract. Please ask Sales Associate for complete details. © 2026 Chesapeake Homes. Current information as 20th February 2026