



The Tulip is an inviting home designed for both gathering and retreat, offering 3,116 square feet of beautifully connected living space with five bedrooms. You're welcomed by a bright dining room that flows effortlessly into the heart of the home. The open-concept kitchen, great room, and breakfast area come together around an expansive kitchen island, perfect for entertaining, with the option to elevate the space by upgrading to the gourmet island. Also on the first floor is a guest suite with an attached full bath, a convenient powder room, and easy access to your patio, which can be enhanced into a covered porch for year-round outdoor enjoyment. Upstairs, a loft provides flexible space to suit your lifestyle. Through elegant double doors, you'll enter the owner's suite, featuring tray ceilings, a generous walk-in closet, and a connecting bathroom with ...



5 Bedrooms



4.5 Bathrooms



3,116 Sq.Ft.



2 Stories



2 Car Garage

CONTACT US 757-550-2617

WWW.CESHOMES.COM



Chesapeake Homes continuously improves home designs and reserves the right to modify home features and specifications without notice or obligation. Square footage and measurements are approximate. Renderings of elevations are artist's concepts. Floor plans vary per elevation. Chesapeake Homes standard features vary by home design and location, please refer to the included features sheet for the community to define specifications. This brochure is for illustrative purposes and not part of the legal contract. Please ask Sales Associate for complete details. © 2026 Chesapeake Homes. Current information as 20th February 2026

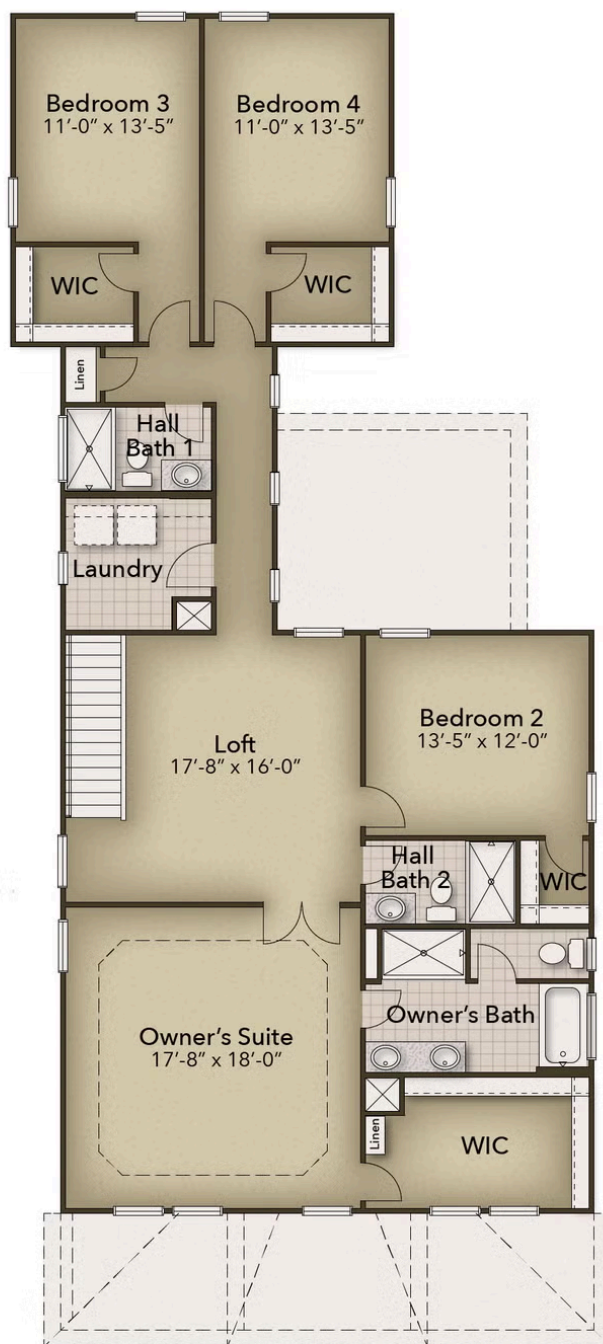


CONTACT US 757-550-2617

WWW.CHESHOMES.COM



Chesapeake Homes continuously improves home designs and reserves the right to modify home features and specifications without notice or obligation. Square footage and measurements are approximate. Renderings of elevations are artist's concepts. Floor plans vary per elevation. Chesapeake Homes standard features vary by home design and location, please refer to the included features sheet for the community to define specifications. This brochure is for illustrative purposes and not part of the legal contract. Please ask Sales Associate for complete details. © 2026 Chesapeake Homes. Current information as 20th February 2026



CONTACT US 757-550-2617

WWW.CHESHOMES.COM



Chesapeake Homes continuously improves home designs and reserves the right to modify home features and specifications without notice or obligation. Square footage and measurements are approximate. Renderings of elevations are artist's concepts. Floor plans vary per elevation. Chesapeake Homes standard features vary by home design and location, please refer to the included features sheet for the community to define specifications. This brochure is for illustrative purposes and not part of the legal contract. Please ask Sales Associate for complete details. © 2026 Chesapeake Homes. Current information as 20th February 2026