



H2O Community

The Placid Floor Plan

The Placid features a unique floorplan that is complete with three bedrooms, two and a half bathrooms, 1,650 square feet, and a one-car garage. This floorplan is comfortably quaint and ready to be called home! The Placid features a huge great room for entertaining or relaxation, a spacious kitchen fit for any connoisseur, plus a half bath and single-car, rear-loading garage on the first level with a shared sizeable welcoming front porch. There are plenty of rooms for family or roommates. First off, the owner's suite on the second floor is located alongside a luxurious owner's bathroom with double vanity and a massive walk-in closet. The owner's suite leads outdoors to a deck perfect for spending sunny afternoons on. On the third floor, you will find two more generously sized bedrooms with a full bathroom, laundry closet, and large linen closet beside. This home is built with beauty and convenience in mind. Make The Placid the place you call home today!

\$319,900



3 Bedrooms



2.5 Bathrooms



1,650 Sq.Ft.



3 Stories



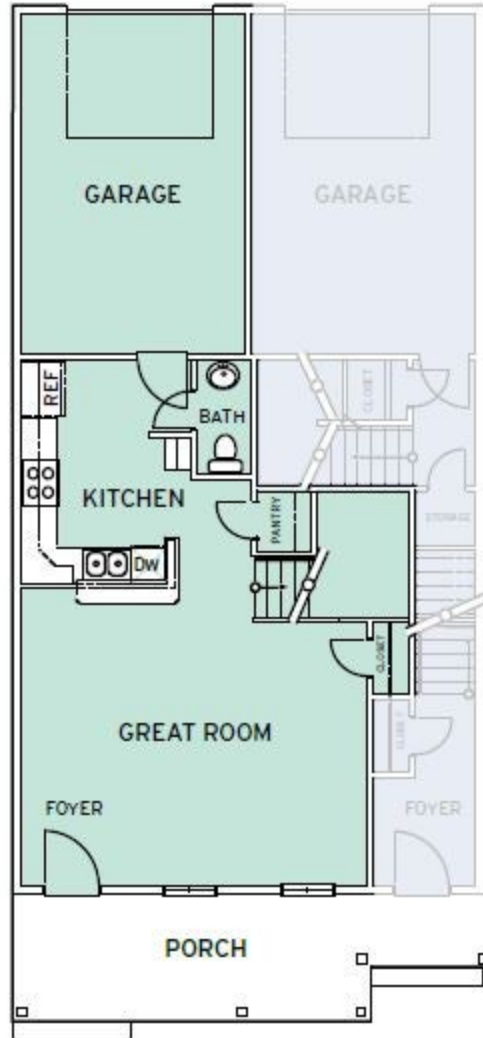
1 Car Garage

CONTACT US 757-550-2617

WWW.CESHOMES.COM



FIRST FLOOR



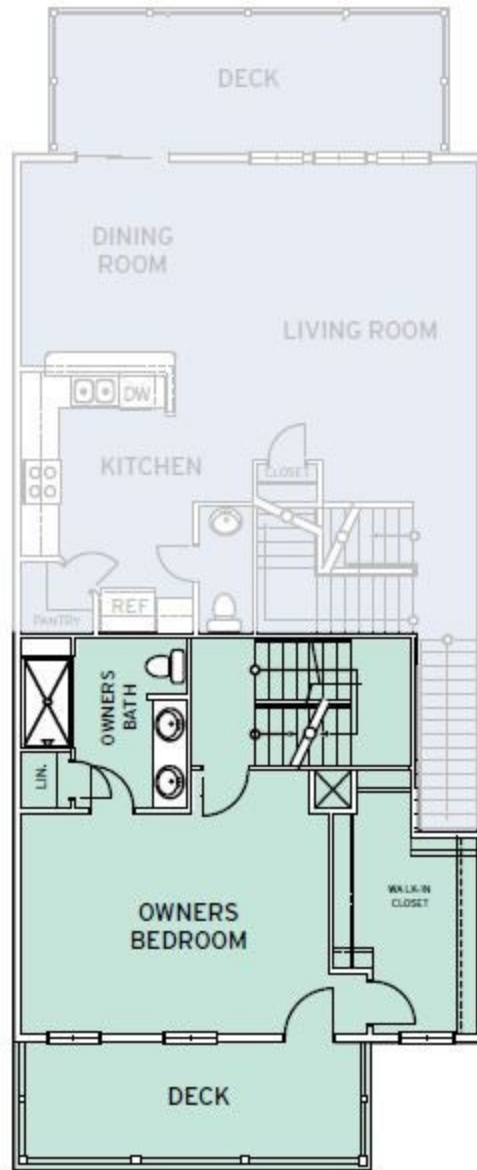
FIRST FLOOR

CONTACT US 757-550-2617

WWW.CESHOMES.COM



SECOND FLOOR



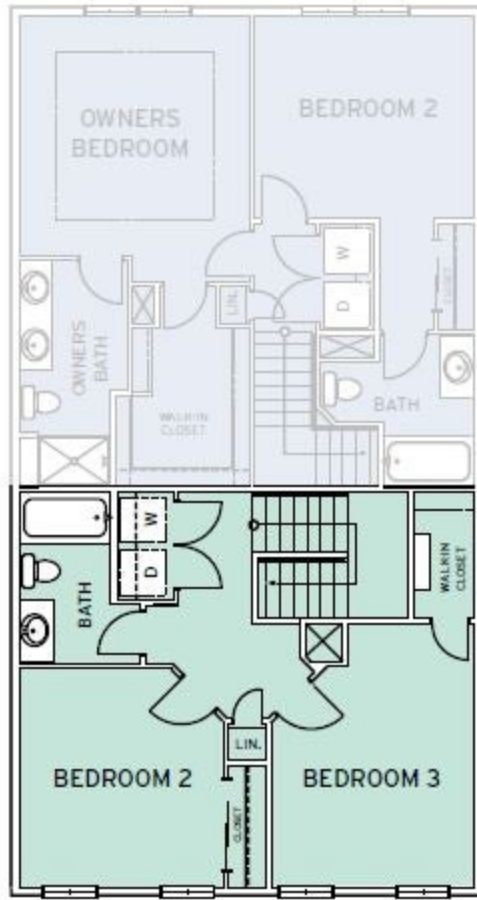
SECOND FLOOR

CONTACT US 757-550-2617

WWW.CESHOMES.COM



THIRD FLOOR



THIRD FLOOR

CONTACT US 757-550-2617

WWW.CESHOMES.COM

