



The Champlain is our largest three-story townhome plan featuring three spacious bedrooms with two and a half baths. Enter into this plan into a foyer that leads you to the vast great room connected to the state-of-the-art kitchen. The first floor also offers a half bathroom and one car garage. Up the staircase onto the second floor, you will find two generously sized bedrooms each with two windows a piece giving plenty of natural light. This floor also features a full bathroom and laundry room. Finish off your laundry room with an optional laundry sink and countertop making organizing a breeze. This model's owner's suite is on the top level for maximum privacy. This large owner's suite is finished with a tray ceiling and a roomy walk-in closet. The owner's bathroom completes the space with a soaking tub, shower, and double vanity along with a separate toilet room. Equally stunning outside as it is inside, this gorgeous model is meant for years of comfort. As with all models, a single-car, rear-loading garage offers discreet entrance to and exit from your home. Call The Champlain home today!



3 Bedrooms



2.5 Bathrooms



1,890 Sq.Ft.



3 Stories



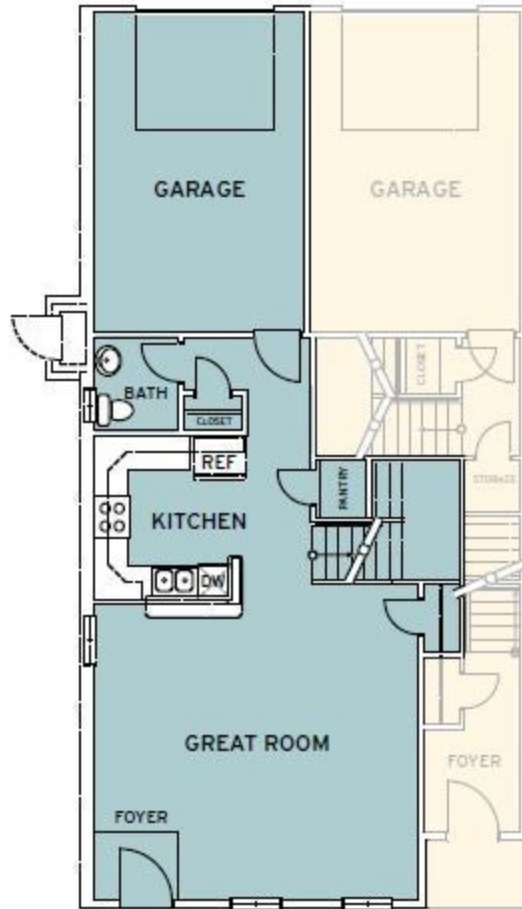
1 Car Garage

CONTACT US 757-550-2617

WWW.CESHOMES.COM



Chesapeake Homes continuously improves home designs and reserves the right to modify home features and specifications without notice or obligation. Square footage and measurements are approximate. Renderings of elevations are artist's concepts. Floor plans vary per elevation. Chesapeake Homes standard features vary by home design and location, please refer to the included features sheet for the community to define specifications. This brochure is for illustrative purposes and not part of the legal contract. Please ask Sales Associate for complete details. © 2024 Chesapeake Homes. Current information as 14th April 2024



FIRST FLOOR

CONTACT US 757-550-2617

WWW.CESHOMES.COM





SECOND FLOOR

CONTACT US 757-550-2617

WWW.CESHOMES.COM





THIRD FLOOR

CONTACT US 757-550-2617

WWW.CESHOMES.COM

