



The Placid features a unique floorplan that is complete with three bedrooms, two and a half bathrooms, 1,650 square feet, and a one-car garage. This floorplan is comfortably quaint and ready to be called home! The Placid features a huge great room for entertaining or relaxation, a spacious kitchen fit for any connoisseur, plus a half bath and single-car, rear-loading garage on the first level with a shared sizeable welcoming front porch. There are plenty of rooms for family or roommates. First off, the owner's suite on the second floor is located alongside a luxurious owner's bathroom with double vanity and a massive walk-in closet. The owner's suite leads outdoors to a deck perfect for spending sunny afternoons on. On the third floor, you will find two more generously sized bedrooms with a full bathroom, laundry closet, and large linen closet beside. This home is built with beauty and convenience in mind. Make The Placid the place you call home today!



3 Bedrooms



2.5 Bathrooms



1,650 Sq.Ft.



3 Stories



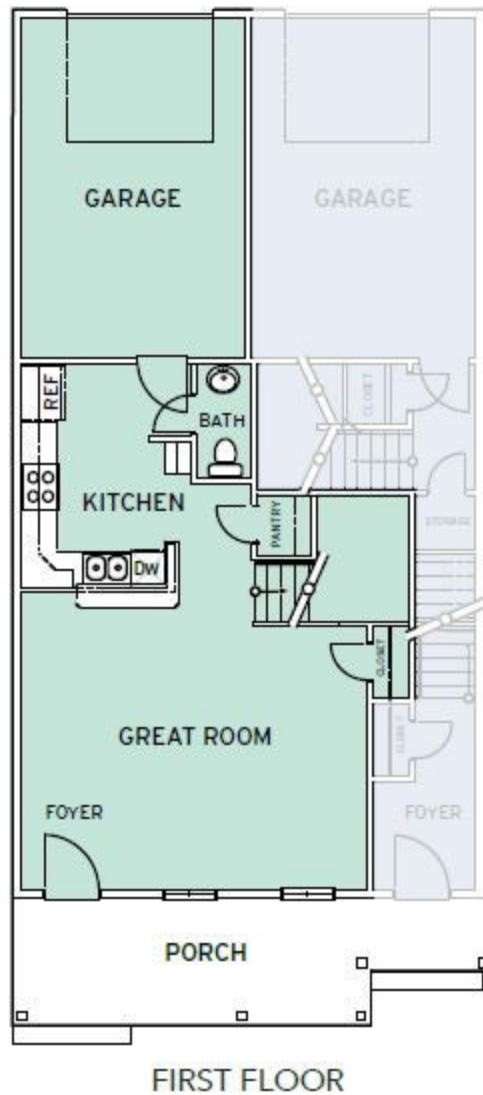
1 Car Garage

CONTACT US 757-550-2617

WWW.CESHOMES.COM



Chesapeake Homes continuously improves home designs and reserves the right to modify home features and specifications without notice or obligation. Square footage and measurements are approximate. Renderings of elevations are artist's concepts. Floor plans vary per elevation. Chesapeake Homes standard features vary by home design and location, please refer to the included features sheet for the community to define specifications. This brochure is for illustrative purposes and not part of the legal contract. Please ask Sales Associate for complete details. © 2024 Chesapeake Homes. Current information as 25th April 2024

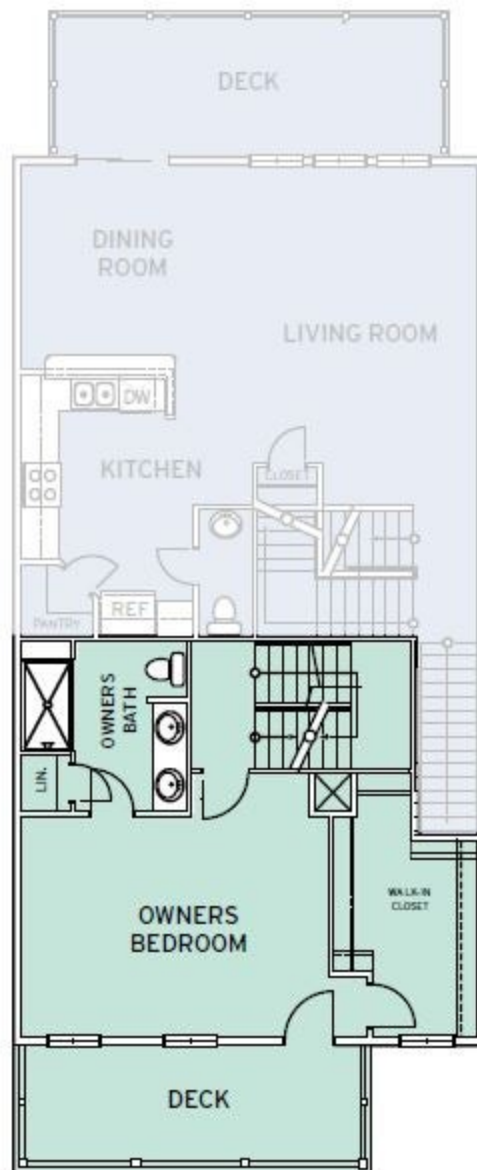


CONTACT US 757-550-2617

WWW.CESHOMES.COM



Chesapeake Homes continuously improves home designs and reserves the right to modify home features and specifications without notice or obligation. Square footage and measurements are approximate. Renderings of elevations are artist's concepts. Floor plans vary per elevation. Chesapeake Homes standard features vary by home design and location, please refer to the included features sheet for the community to define specifications. This brochure is for illustrative purposes and not part of the legal contract. Please ask Sales Associate for complete details. © 2024 Chesapeake Homes. Current information as 25th April 2024

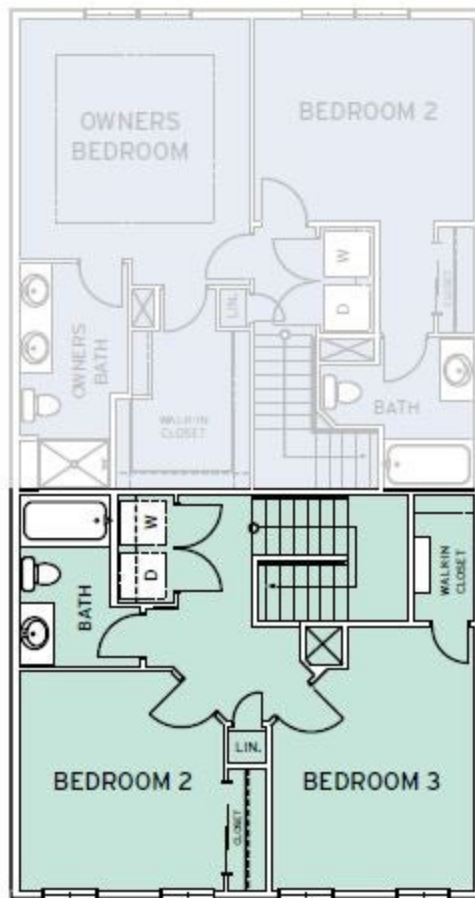


SECOND FLOOR

CONTACT US 757-550-2617

WWW.CESHOMES.COM



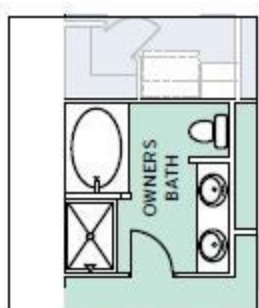


THIRD FLOOR

CONTACT US 757-550-2617

WWW.CESHOMES.COM





SECOND FLOOR
OPTIONAL DELUXE
OWNERS BATH

CONTACT US 757-550-2617

WWW.CESHOMES.COM



Chesapeake Homes continuously improves home designs and reserves the right to modify home features and specifications without notice or obligation. Square footage and measurements are approximate. Renderings of elevations are artist's concepts. Floor plans vary per elevation. Chesapeake Homes standard features vary by home design and location, please refer to the included features sheet for the community to define specifications. This brochure is for illustrative purposes and not part of the legal contract. Please ask Sales Associate for complete details. © 2024 Chesapeake Homes. Current information as 25th April 2024