



Townes at Coliseum Central Community

The Gala Floor Plan

Welcome home to the Gala, a three-story townhome that combines function and style into your everyday life. With over 2,000 square feet holds up 4 bedrooms and to 3.5 bathrooms. The first floor holds a bedroom and full bathroom, as well as access to your two-car garage. On the second floor, you will find a spacious living room, powder room, and dining room that is connected to your kitchen separated by a large island. On the third floor, you will find two bedrooms, your owner suite and bathroom which is available for upgrades, as well as another full bath and laundry room. The Gala is the perfect option for anyone looking for a spacious townhome living in a location second to none. **Please call our Online Sales Consultants at 757-550-2617 to learn more!

\$399,900



4 Bedrooms



3.5 Bathrooms



2,078 Sq.Ft.



3 Stories



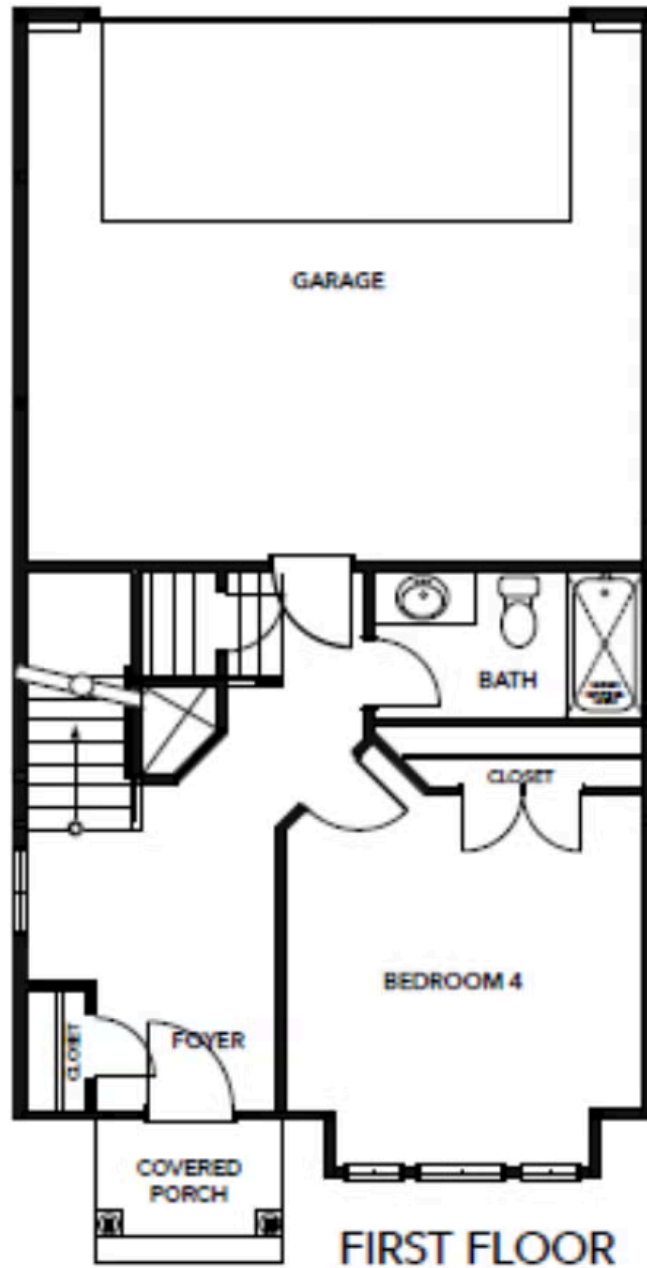
2 Car Garage

CONTACT US 757-550-2617

WWW.CESHOMES.COM



FIRST FLOOR

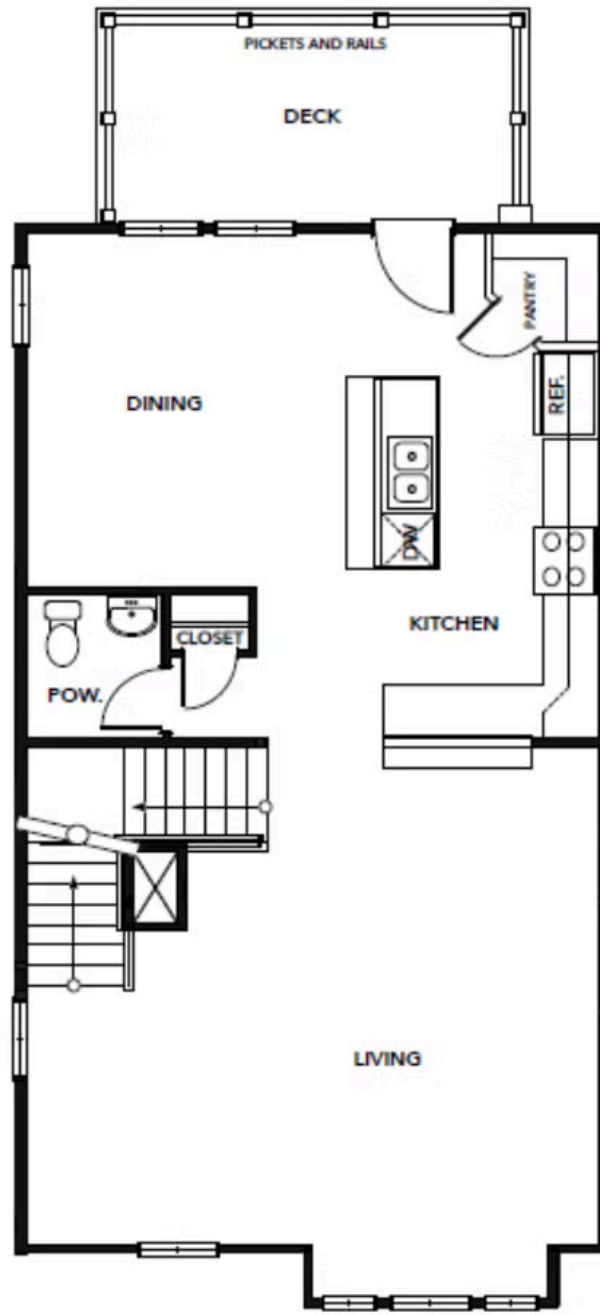


CONTACT US 757-550-2617

WWW.CHESHOMES.COM



SECOND FLOOR



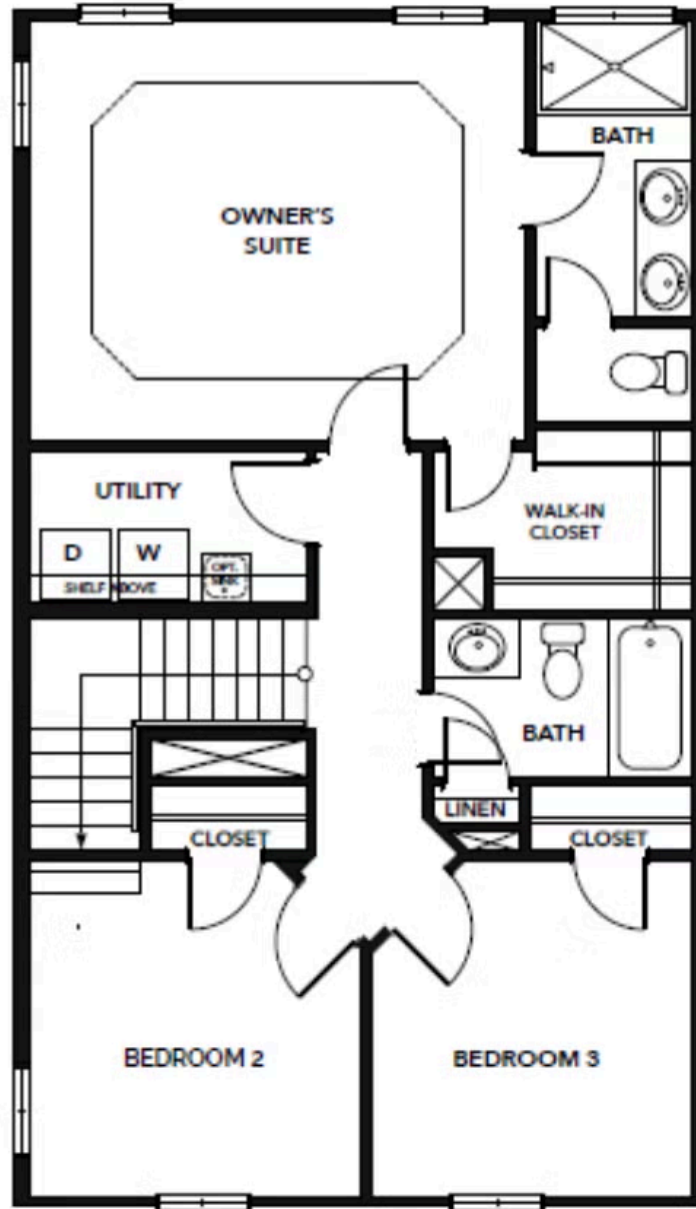
SECOND FLOOR

CONTACT US 757-550-2617

WWW.CHESHOMES.COM



THIRD FLOOR



THIRD FLOOR

CONTACT US 757-550-2617

WWW.CHESHOMES.COM

