



## Townes at Coliseum Central Community

### The Ambrosia Floor Plan

The Ambrosia is a concise floorplan that combines daily functionality and open relaxed living. On the first floor you will enter your foyer to find your first bedroom and full bathroom. On the Second-floor you will find a wide open area comprising your great room, kitchen, and dining area. Lastly, on the third floor, you will find your laundry room, two more bedrooms, one full bathroom and your owner's suite and full bathroom. All 2,155 square feet are used to advance your daily life with options for upgrades that will make your life even easier after a long day. \*\*Please call our Online Sales Consultants at 757-550-2617 to learn more!

**\$424,900**



**4 Bedrooms**



**3.5 Bathrooms**



**2,155 Sq.Ft.**



**3 Stories**



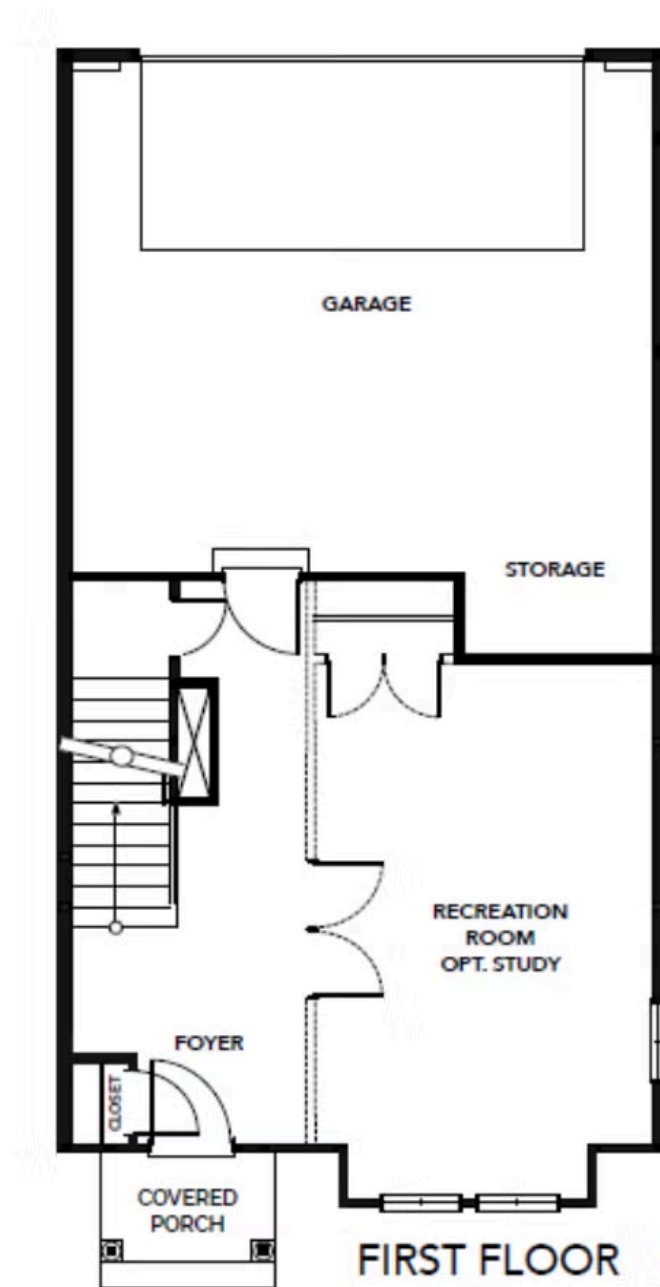
**2 Car Garage**

**CONTACT US 757-550-2617**

**WWW.CHESHOMES.COM**



## FIRST FLOOR

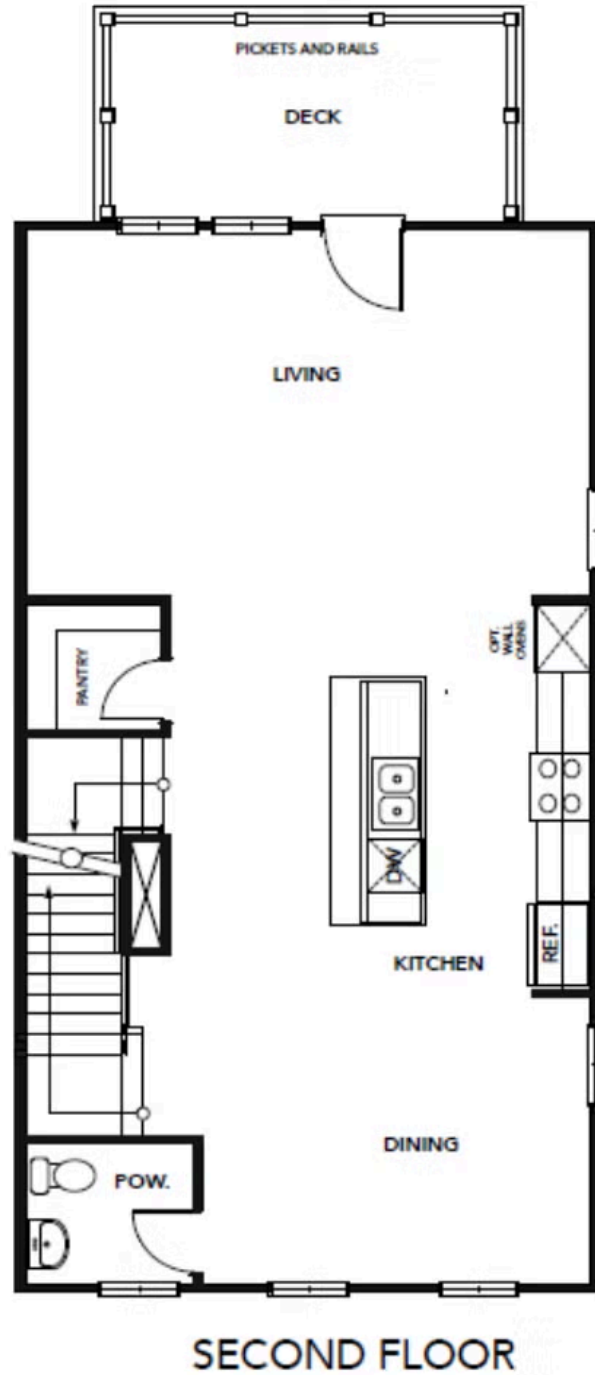


CONTACT US 757-550-2617

WWW.CHESHOMES.COM



## SECOND FLOOR

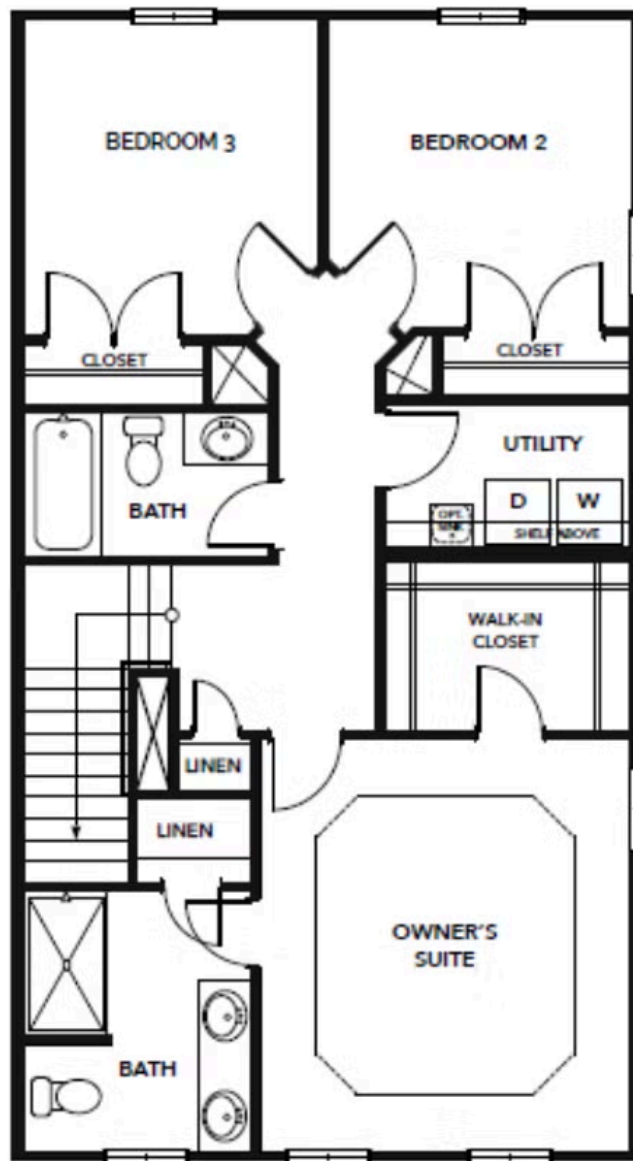


CONTACT US 757-550-2617

WWW.CHESHOMES.COM



## THIRD FLOOR

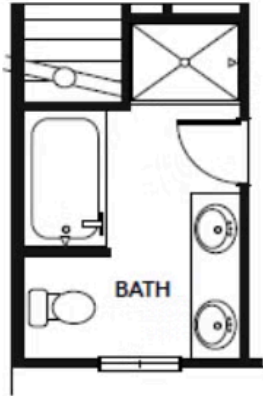


THIRD FLOOR

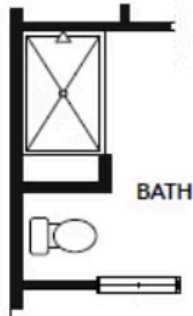
CONTACT US 757-550-2617

WWW.CHESHOMES.COM

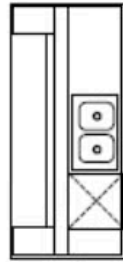
## OPTIONS



OPT. DELUXE  
OWNER'S BATH 1



OPT. DELUXE  
OWNER'S BATH 2



OPT. GOURMET  
KITCHEN ISLAND



OPT. BEDROOM 4 WITH BATH

CONTACT US 757-550-2617

WWW.CHESHOMES.COM



Chesapeake Homes continuously improves home designs and reserves the right to modify home features and specifications without notice or obligation. Square footage and measurements are approximate. Renderings of elevations are artist's concepts. Floor plans vary per elevation. Chesapeake Homes standard features vary by home design and location, please refer to the included features sheet for the community to define specifications. This brochure is for illustrative purposes and not part of the legal contract. Please ask Sales Associate for complete details. © 2025 Chesapeake Homes. Current information as 15th September 2025