



## Townes at Coliseum Central Community

### The Gala Floor Plan

Welcome home to the Gala, a three-story townhome that combines function and style into your everyday life. The 2,000+ square feet holds 4 bedrooms and 3.5 bathrooms. The first floor holds a bedroom and a full bath. On this floor, you also have access to your two-car garage. On the second floor, you will find a spacious living room, powder room, and dining room that is connected to your kitchen separated by a large island. On the third floor, you will find two bedrooms, your owner suite and bathroom which has been upgraded to a deluxe owner's bathroom. Additionally, you will find another full bath and laundry room. The Gala is the perfect option for anyone looking for a spacious townhome living in a location second to none.

**\$399,900**



**4 Bedrooms**



**3.5 Bathrooms**



**2,078 Sq.Ft.**

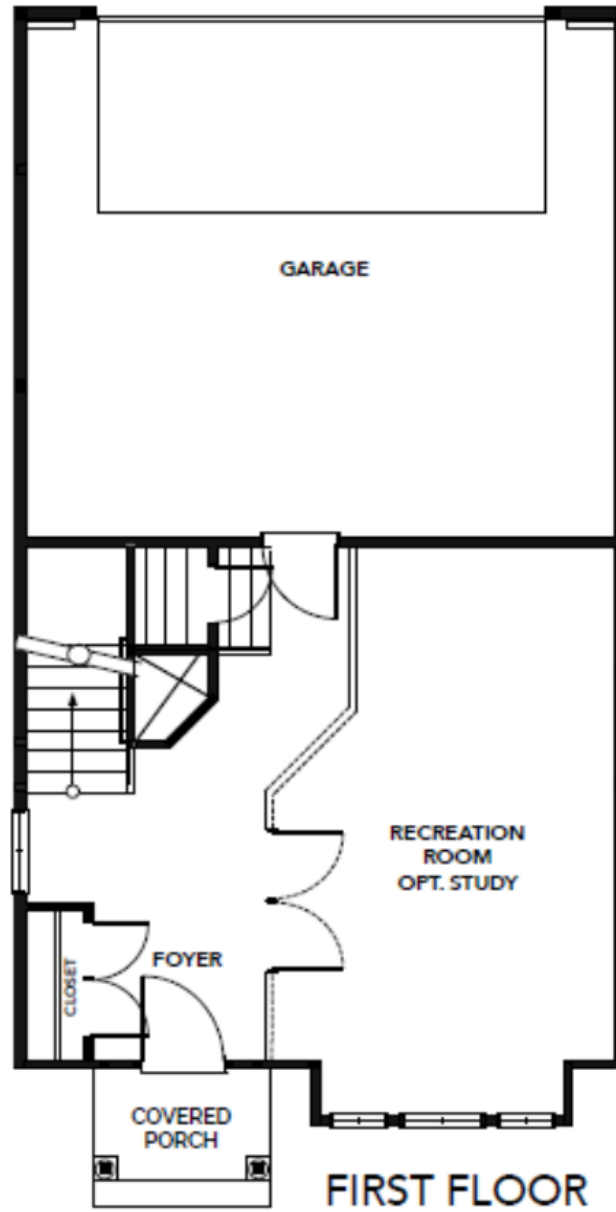


**3 Stories**



**2 Car Garage**

## FIRST FLOOR

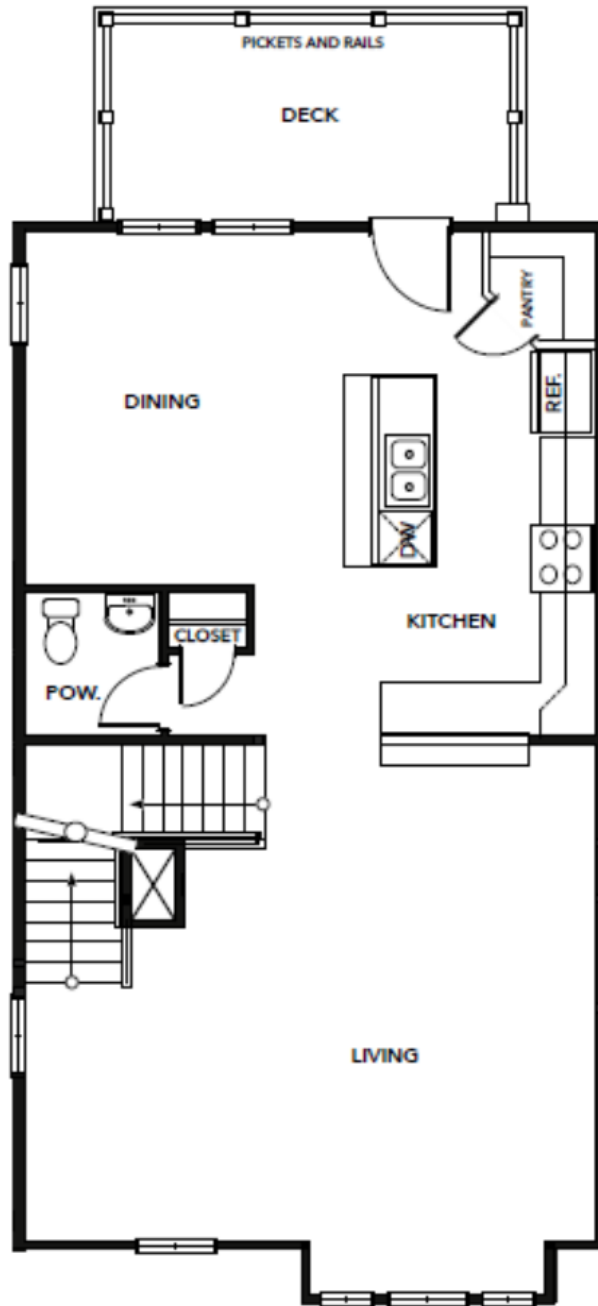


**CONTACT US 757-550-2617**

**WWW.CESHOMES.COM**



## SECOND FLOOR



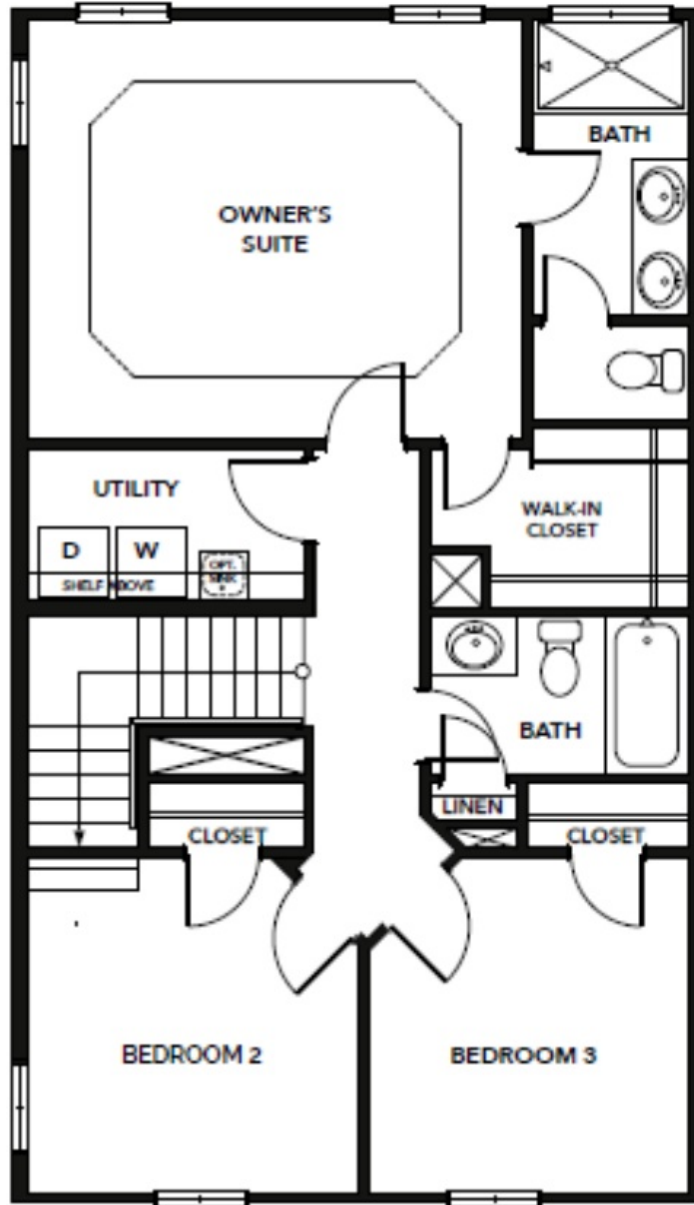
## SECOND FLOOR

**CONTACT US 757-550-2617**

**WWW.CESHOMES.COM**



### THIRD FLOOR



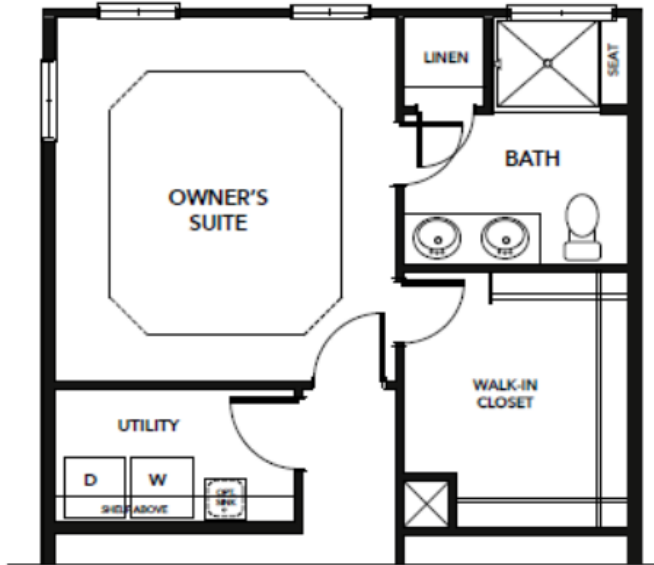
### THIRD FLOOR

**CONTACT US 757-550-2617**

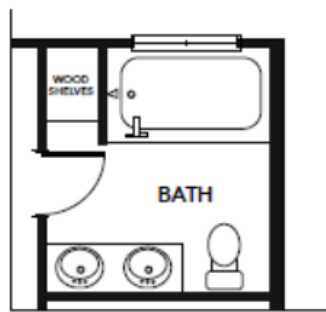
**WWW.CESHOMES.COM**



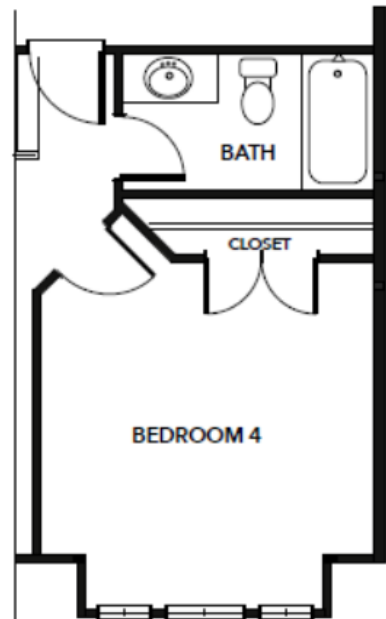
## OPTIONS



OPT. DELUXE OWNER'S BATH #1



OPT. DELUXE  
OWNER'S BATH #2



OPT. BEDROOM 4  
WITH BATH

**CONTACT US 757-550-2617**

**WWW.CESHOMES.COM**

