



Townes at Coliseum Central Community

The Ambrosia Floor Plan

The Ambrosia is a concise floorplan that combines daily functionality and open relaxed living. On the first floor, you will enter your foyer to find a spacious bedroom and attached full bath. On the Second-floor you will find a wide open area that consists of your great room, kitchen, and dining area. In the center of it all is a large kitchen island. Lastly, on the third floor, you will find your laundry room, two more bedrooms, and your owner's suite with an attached upgraded deluxe owner's bathroom. All 2,155 square feet are used to advance your daily life and will make your life even easier after a long day. **Please call our Online Sales Consultants at 757-550-2617 to learn more!

\$399,900



4 Bedrooms



3.5 Bathrooms



2,155 Sq.Ft.



3 Stories



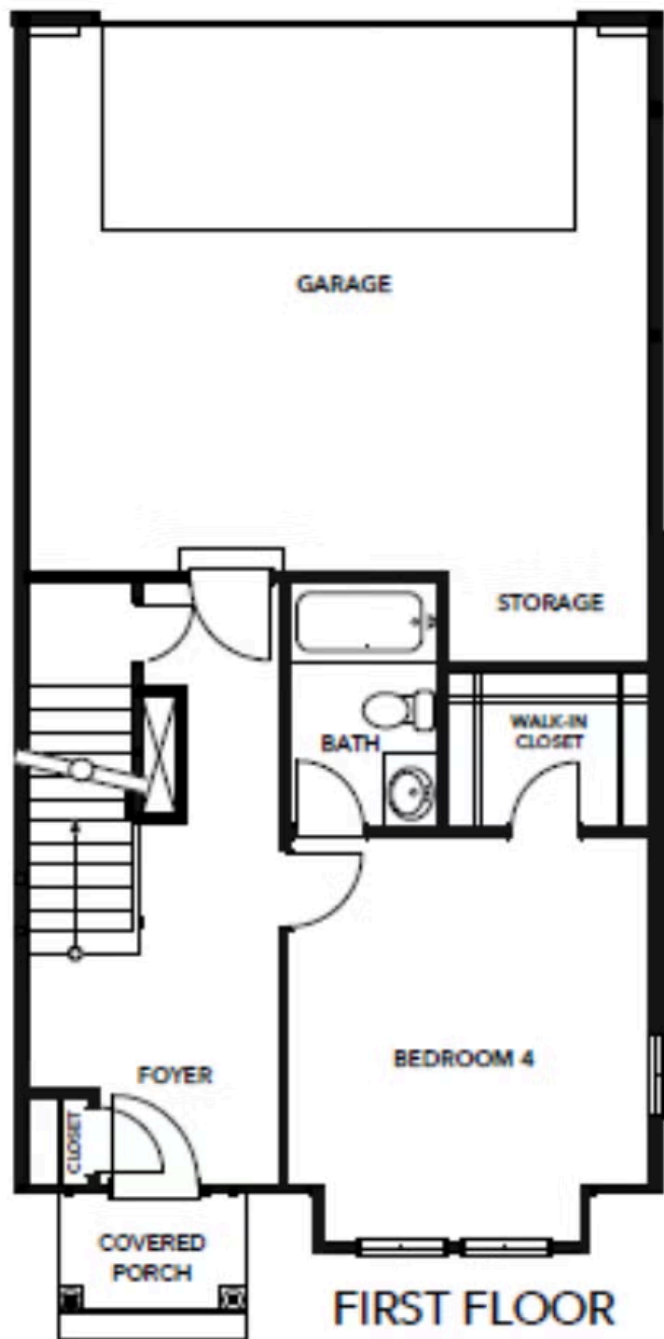
2 Car Garage

CONTACT US 757-550-2617

WWW.CESHOMES.COM



FIRST FLOOR

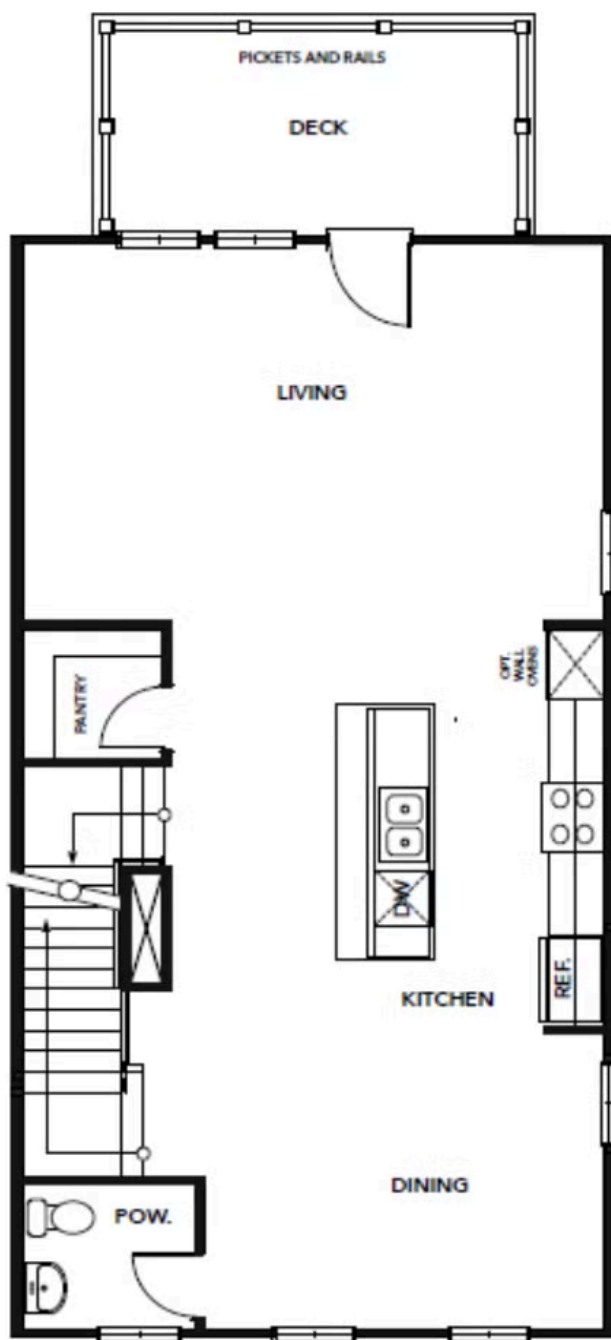


CONTACT US 757-550-2617

WWW.CESHOMES.COM



SECOND FLOOR



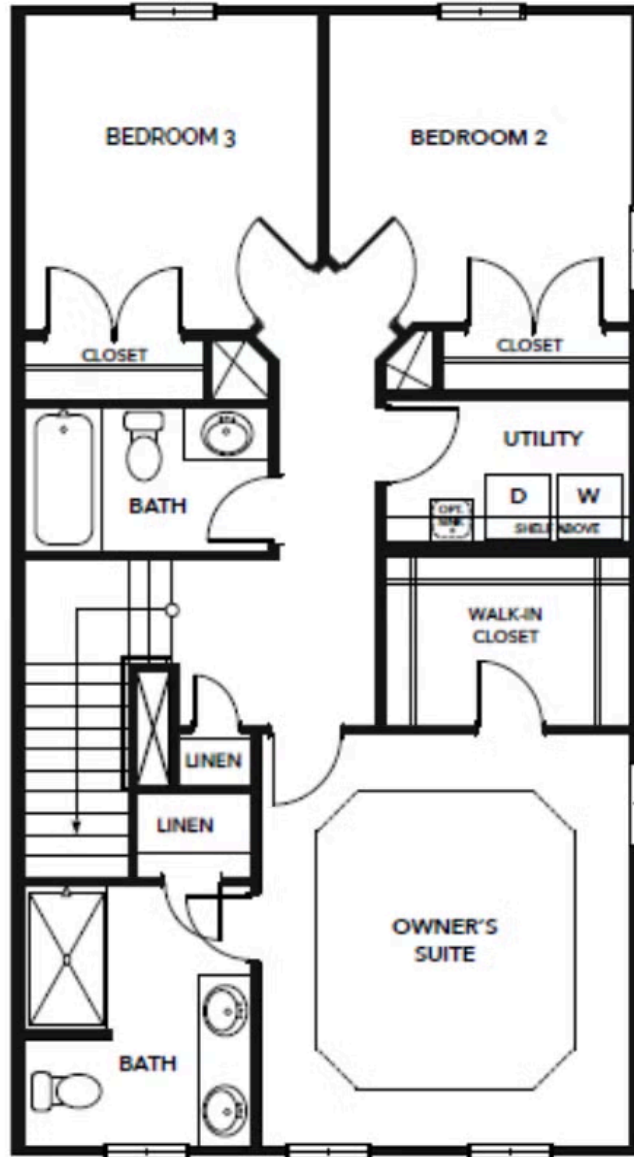
SECOND FLOOR

CONTACT US 757-550-2617

WWW.CHESHOMES.COM



THIRD FLOOR



THIRD FLOOR

CONTACT US 757-550-2617

WWW.CESHOMES.COM