

## Townes at Coliseum Central Community

### The Gala Floor Plan

Welcome home to the Gala, a three-story townhome that combines function and style into your everyday life. This floor plan features 4 bedrooms and 3.5 bathrooms in over 2,000 square feet of luxury living. The first floor holds a bedroom, bathroom, the foyer, and access to your two-car garage. On the second floor, you will find a spacious living room, powder room, and dining room that is connected to your kitchen, separated by a large island. On the third floor, you will find two bedrooms, your owner suite with ensuite bathroom, as well as another full bath and laundry room. The Gala is the perfect option for anyone looking for spacious townhome living in a location second to none.

**\$419,900**



4 Bedrooms



3.5 Bathrooms



2,078 Sq.Ft.



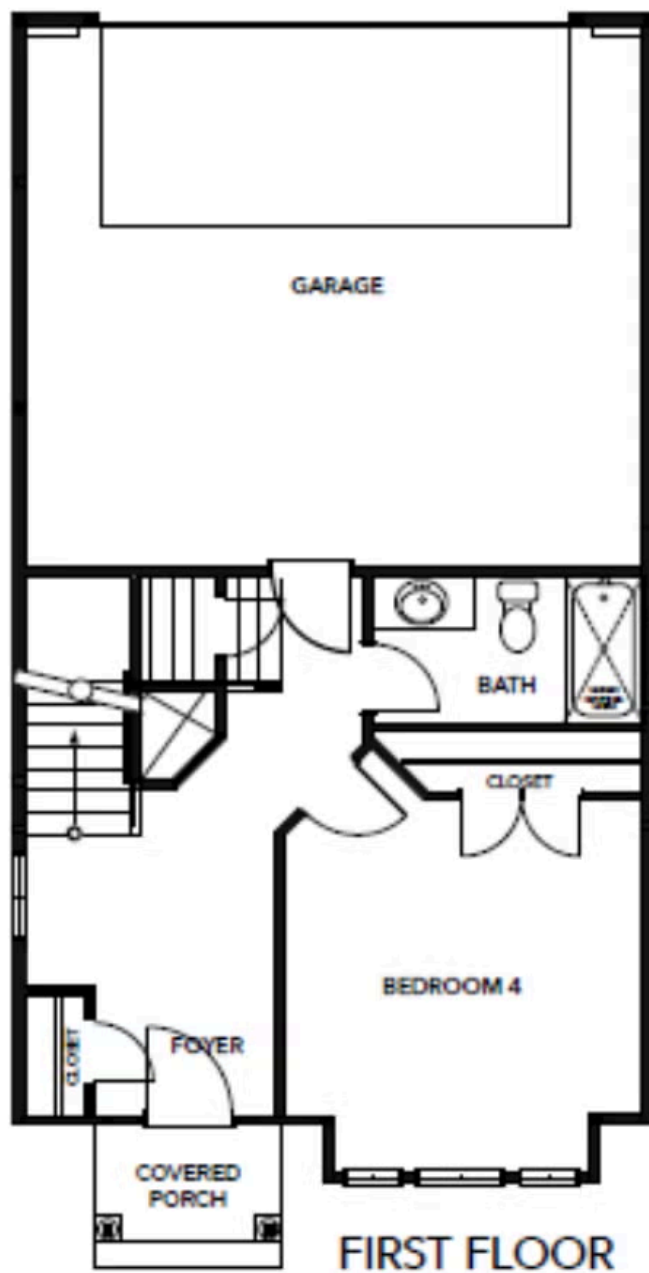
3 Stories



2 Car Garage



## FIRST FLOOR

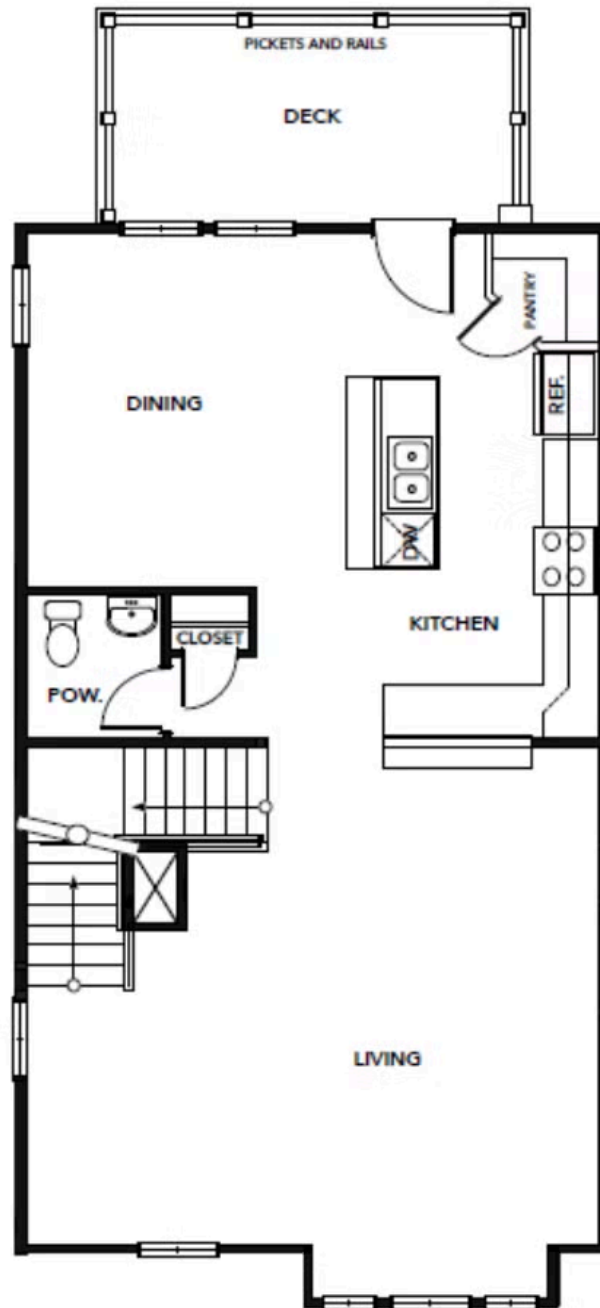


CONTACT US 757-550-2617

WWW.CESHOMES.COM



## SECOND FLOOR



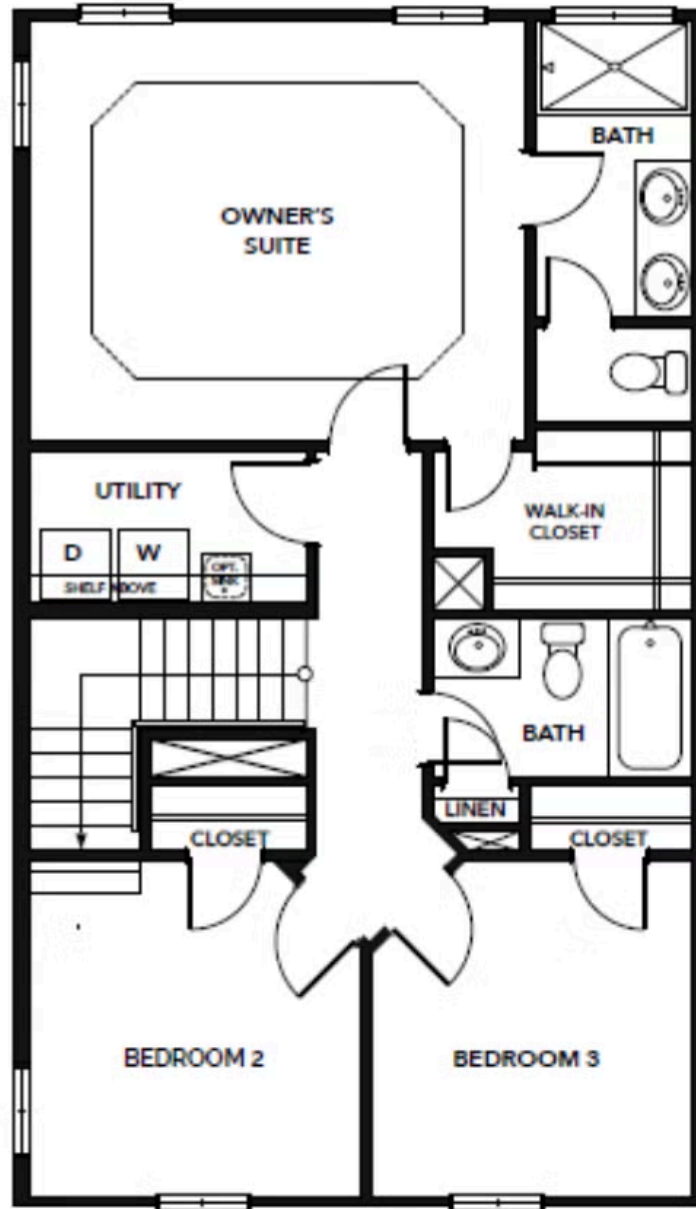
SECOND FLOOR

CONTACT US 757-550-2617

WWW.CESHOMES.COM



### THIRD FLOOR



### THIRD FLOOR

CONTACT US 757-550-2617

WWW.CESHOMES.COM

