



Townes at Coliseum Central Community

The Braeburn Floor Plan

The Braeburn uses all 1,821 square feet to its advantage. On the first floor, you will find a bedroom located directly off the foyer, as well as a full bathroom and access to your one-car garage, which features a storage area. Up the stairs to the second floor, you will find a large open living area attached to a kitchen with a corner pantry and an island. Past the island, you will find a breakfast nook/dining area, as well as a powder room. Lastly, on the third floor, prepare to enter your beautiful owner's suite, featuring tray ceilings, an attached bathroom, and a walk-in closet. Additionally, on this level is a full bath, laundry area, and two additional bedrooms.

\$390,900



4 Bedrooms



3.5 Bathrooms



1,822 Sq.Ft.



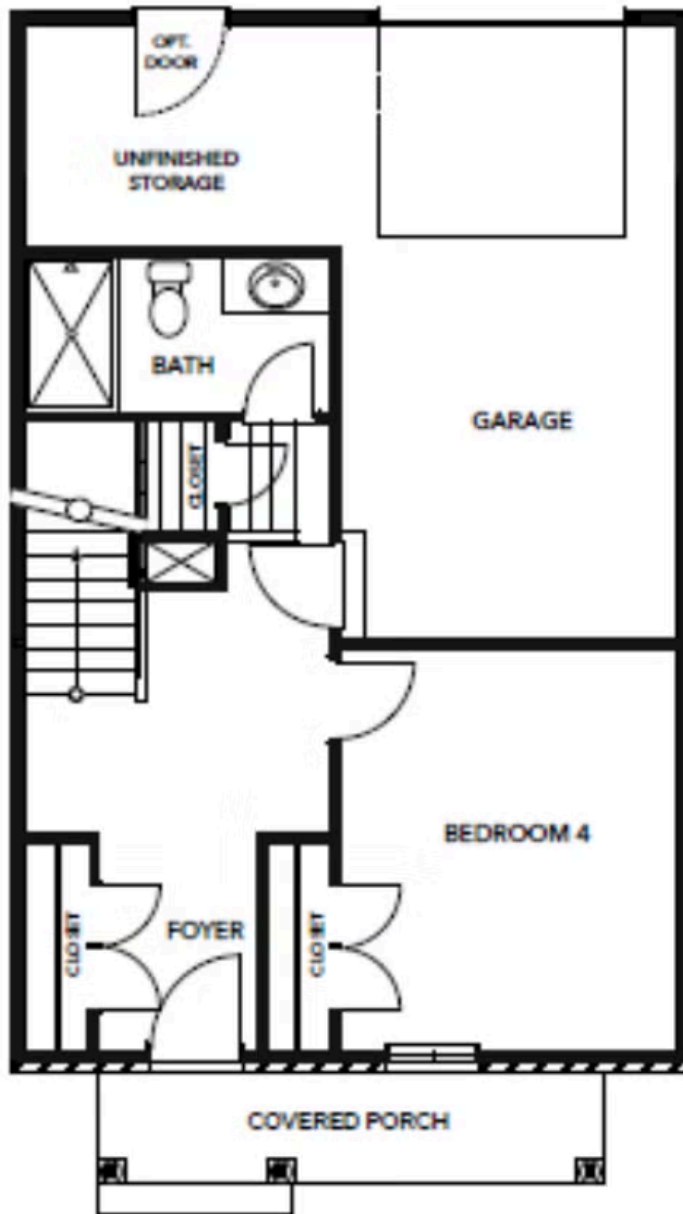
3 Stories



1 Car Garage



FIRST FLOOR



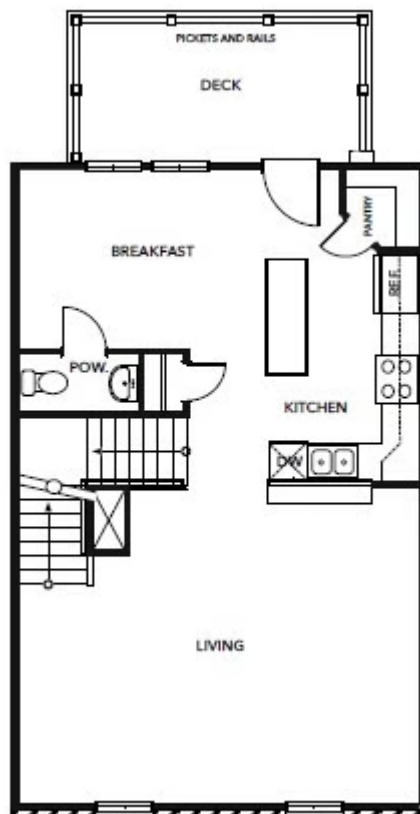
FIRST FLOOR

CONTACT US 757-550-2617

WWW.CESHOMES.COM



SECOND FLOOR

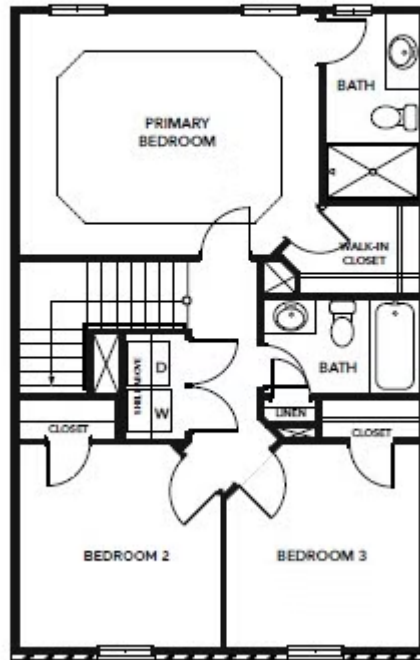


CONTACT US 757-550-2617

WWW.CESHOMES.COM



THIRD FLOOR



CONTACT US 757-550-2617

WWW.CESHOMES.COM

