



Townes at Coliseum Central Community

The Ambrosia Floor Plan

The Ambrosia is a concise floorplan that combines daily functionality and open relaxed living. On the first floor, you will enter your foyer to find a bedroom and a full attached bathroom. On the Second-floor you will find a wide open area that consists of your great room, kitchen, and dining area. In the center of it is a large kitchen island. Lastly, on the third floor, you will find your laundry room, two more bedrooms, and your owner's suite with an attached upgraded deluxe bathroom. All 2,155 square feet are used to advance your daily life and will make your life even easier after a long day. *Photos of Similar Home Shown***Please call our Online Sales Consultants at 757-550-2617 to learn more!

\$425,900



4 Bedrooms



3.5 Bathrooms



2,155 Sq.Ft.



3 Stories



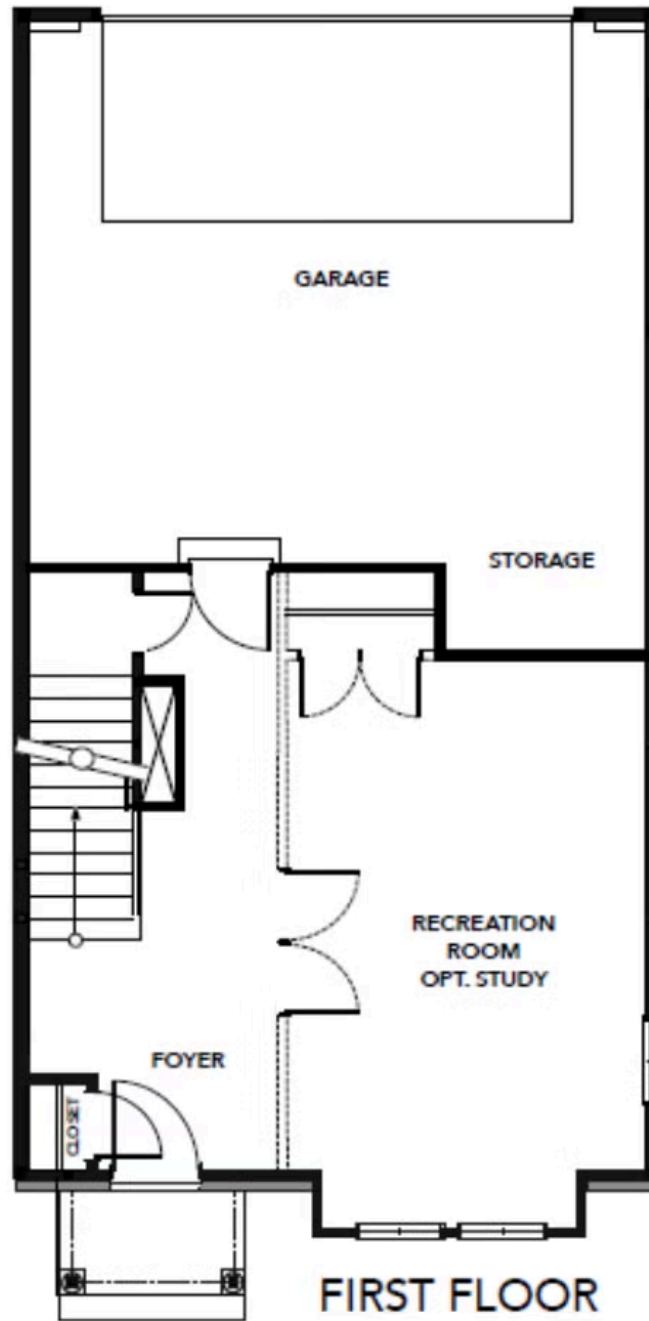
2 Car Garage

CONTACT US 757-550-2617

WWW.CESHOMES.COM



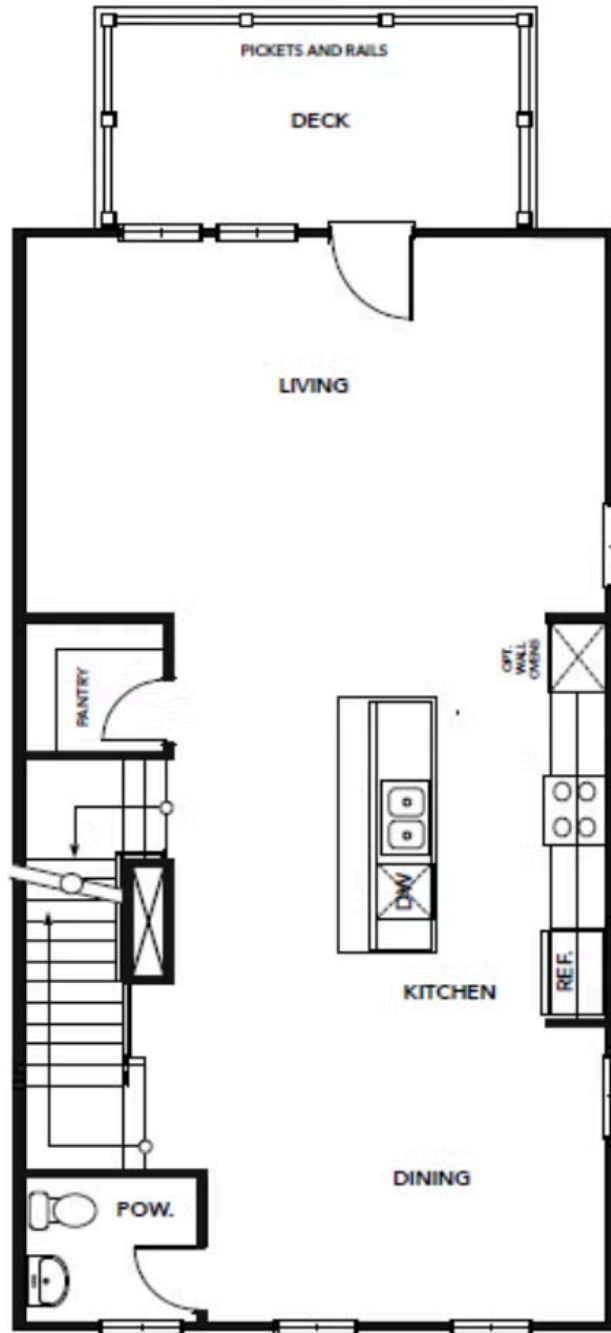
FIRST FLOOR



CONTACT US 757-550-2617

WWW.CHESHOMES.COM

SECOND FLOOR

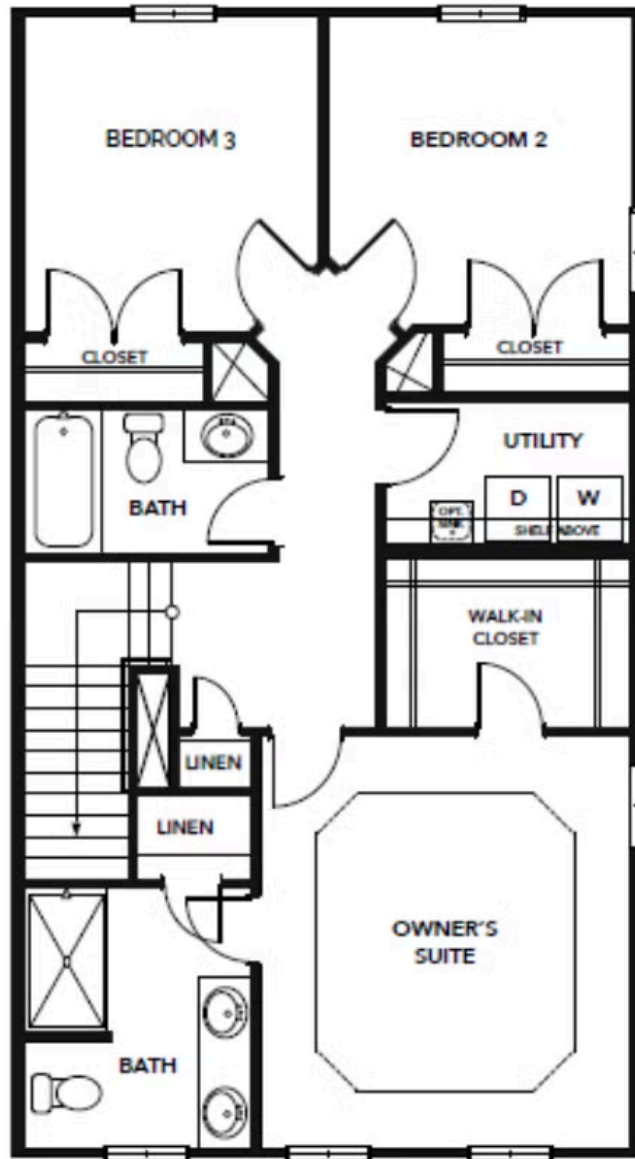


SECOND FLOOR

CONTACT US 757-550-2617

WWW.CESHOMES.COM

THIRD FLOOR



THIRD FLOOR

CONTACT US 757-550-2617

WWW.CESHOMES.COM

