



Townes at Coliseum Central Community

The Ambrosia Floor Plan

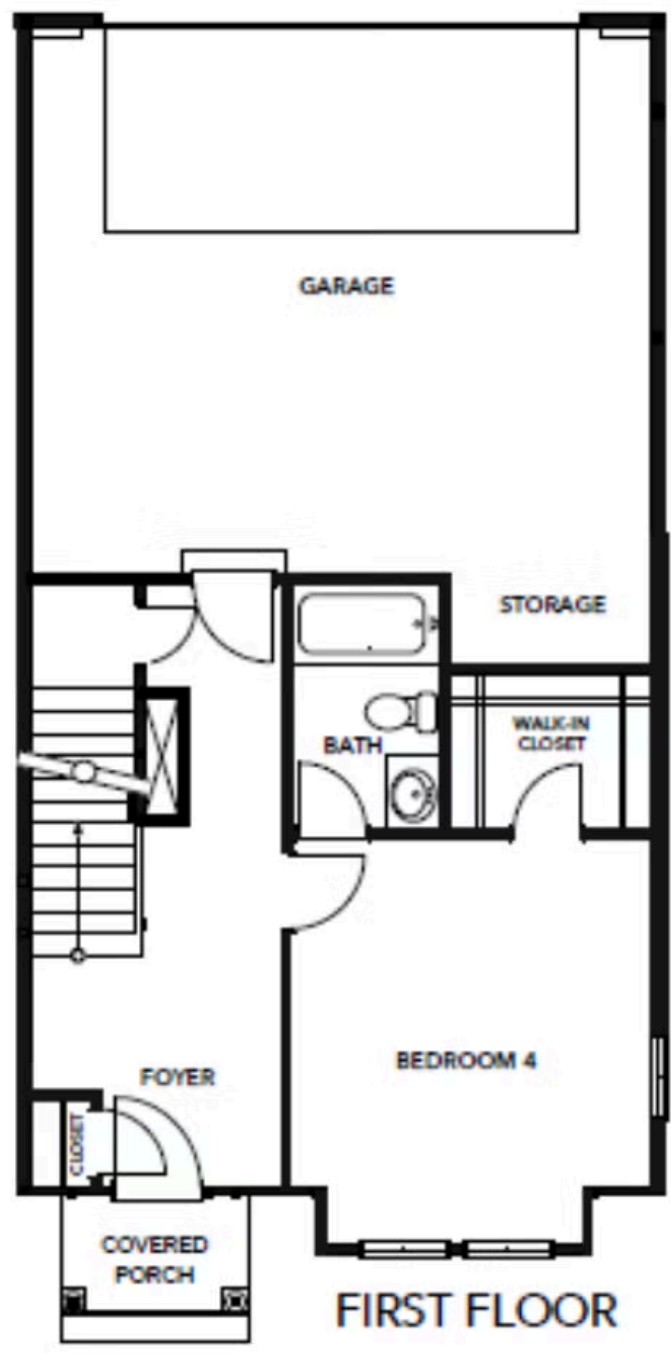
The Ambrosia is a concise floor plan that combines daily functionality and open, relaxed living. On the first floor, you will enter your foyer to find a large bedroom with an ensuite bathroom. On the second floor, you will find a wide open area comprising your great room, kitchen, and dining area. At its center is a large kitchen island perfect for entertaining. Lastly, on the third floor, you will find your laundry room, two additional bedrooms, and your owner's suite. All 2,155 square feet are used to advance your daily life with options for upgrades that will make your life even easier after a long day. *Photos of Similar Home Shown

\$435,900

 4 Bedrooms

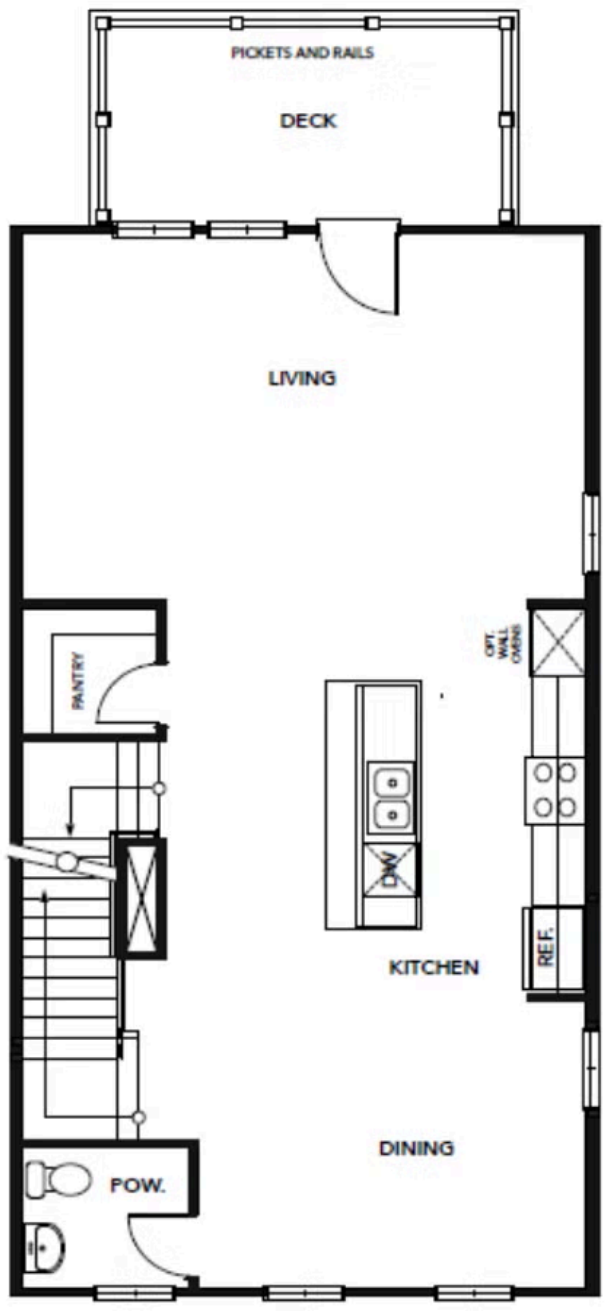
 3.5 Bathrooms

FIRST FLOOR



CONTACT US 757-550-2617
WWW.CHESHOMES.COM

SECOND FLOOR

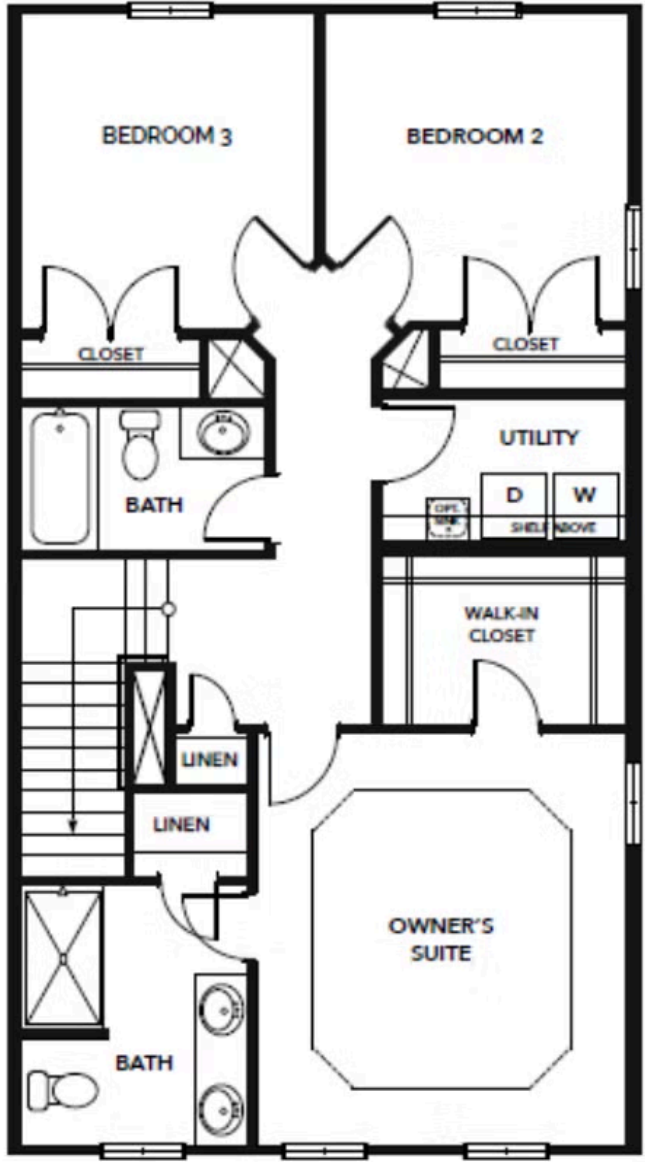


SECOND FLOOR

CONTACT US 757-550-2617

WWW.CHESHOMES.COM

THIRD FLOOR



THIRD FLOOR

CONTACT US 757-550-2617
WWW.CESHOMES.COM