

## Townes at Coliseum Central Community

### The Braeburn Floor Plan

The Braeburn uses all 1,821 square feet to its advantage. On the first floor, you will find a bedroom located directly off the foyer, as well as a full bathroom and access to your one-car garage, which features a storage area. Up the stairs to the second floor, you will find a large open living area attached to a kitchen with a corner pantry and an island. Past the island, you will find a breakfast nook/dining area, as well as a powder room. Lastly, on the third floor, prepare to enter your beautiful owner's suite, featuring tray ceilings, an attached bathroom, and a walk-in closet. Additionally, on this level is a full bath, laundry area, and two additional bedrooms. \*Photos of Similar Home Shown

**\$388,900**



**4 Bedrooms**



**3.5 Bathrooms**



**1,822 Sq.Ft.**



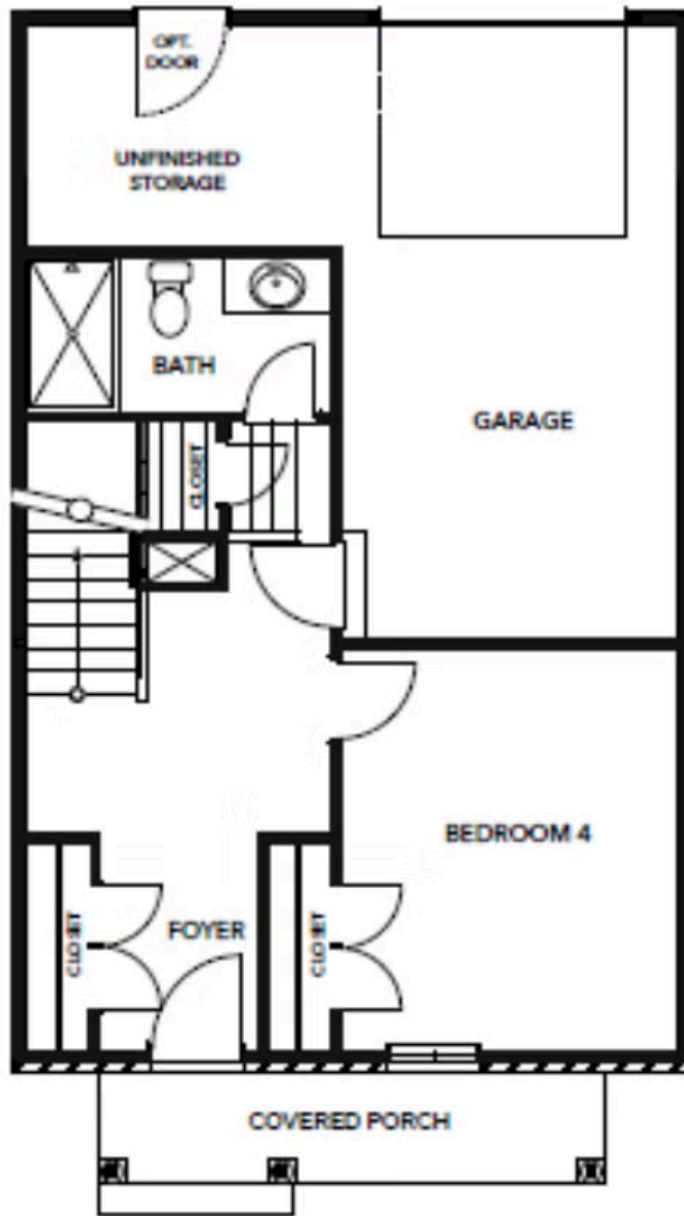
**3 Stories**



**1 Car Garage**



## FIRST FLOOR



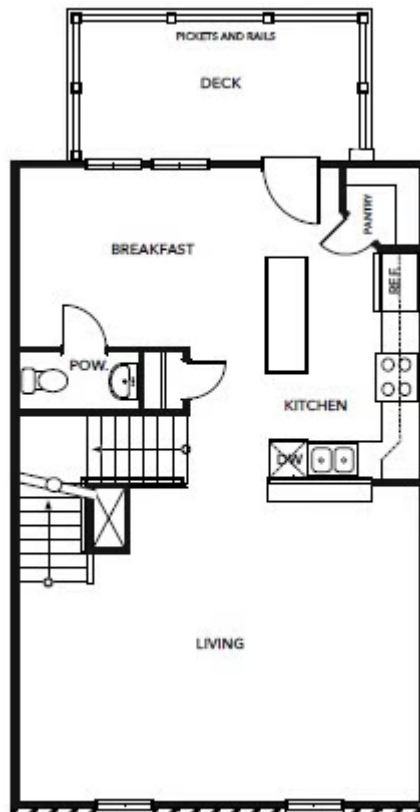
FIRST FLOOR

CONTACT US 757-550-2617

WWW.CESHOMES.COM



## SECOND FLOOR

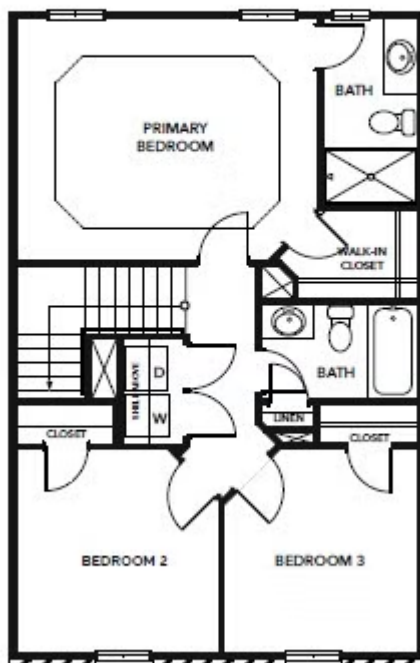


CONTACT US 757-550-2617

WWW.CESHOMES.COM



## THIRD FLOOR



CONTACT US 757-550-2617

WWW.CESHOMES.COM

