



The Ambrosia is a concise floorplan that combines daily functionality and open relaxed living. On the first floor you will enter your foyer to find a large recreational room that has the option to be turned into a 4th bedroom. On the Second-floor you will find a wide open area comprising your great room, kitchen, and dining area. In the center of it is a large kitchen island that can be upgraded to our gourmet option. Lastly, on the third floor, you will find your laundry room, two more bedrooms, and your owner's suite. All 2,155 square feet are used to advance your daily life with options for upgrades that will make your life even easier after a long day.



4 Bedrooms



3.5 Bathrooms



2,155 Sq.Ft.



3 Stories



2 Car Garage

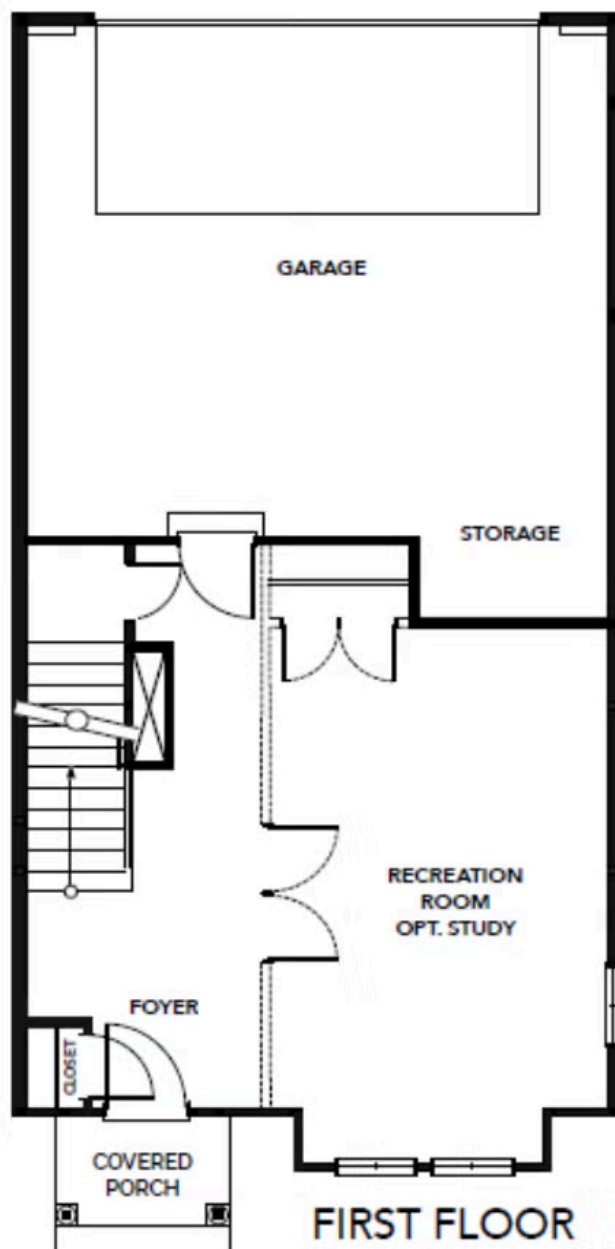
CONTACT US 757-550-2617

WWW.CESHOMES.COM



Chesapeake Homes continuously improves home designs and reserves the right to modify home features and specifications without notice or obligation. Square footage and measurements are approximate. Renderings of elevations are artist's concepts. Floor plans vary per elevation. Chesapeake Homes standard features vary by home design and location, please refer to the included features sheet for the community to define specifications. This brochure is for illustrative purposes and not part of the legal contract. Please ask Sales Associate for complete details. © 2025 Chesapeake Homes. Current information as 24th May 2025

FIRST FLOOR

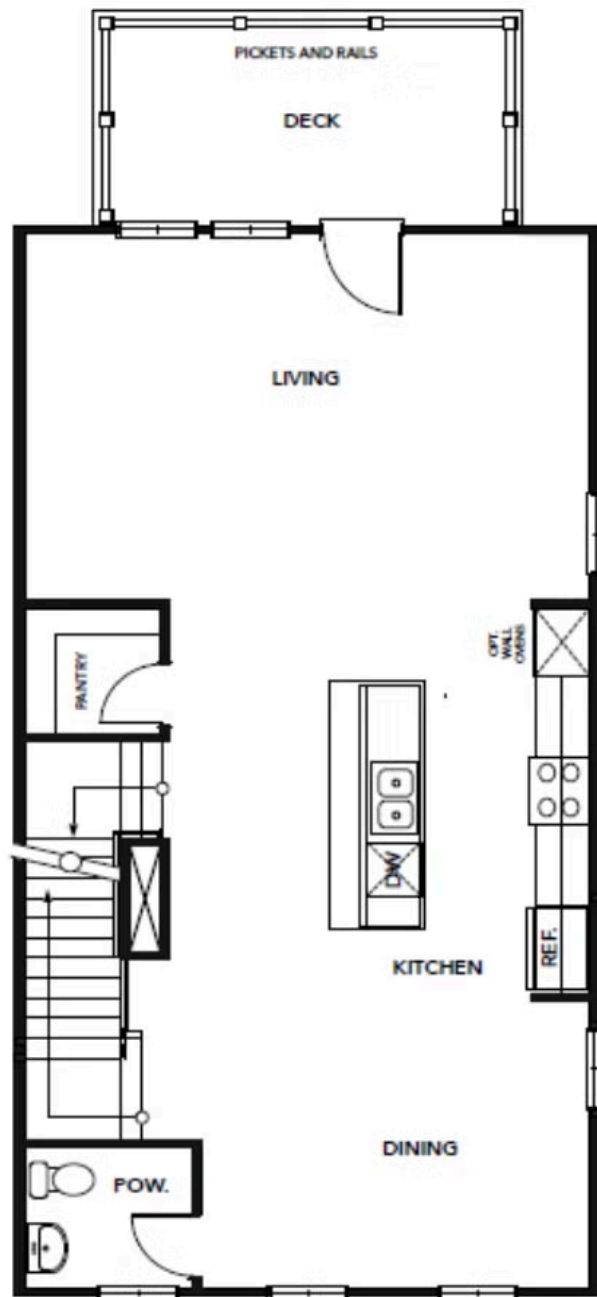


CONTACT US 757-550-2617

WWW.CESHOMES.COM



SECOND FLOOR



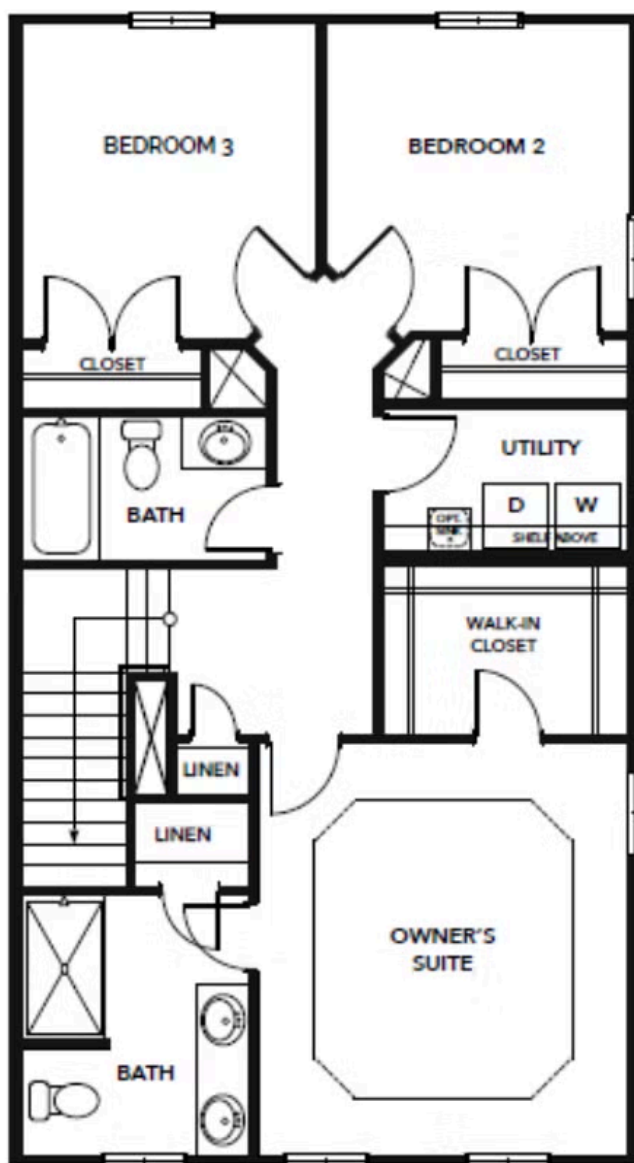
SECOND FLOOR

CONTACT US 757-550-2617

WWW.CESHOMES.COM



THIRD FLOOR



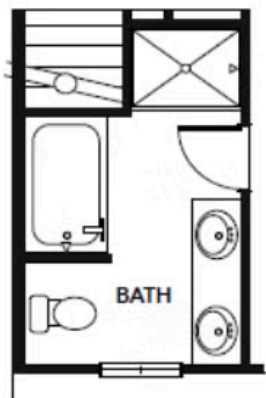
THIRD FLOOR

CONTACT US 757-550-2617

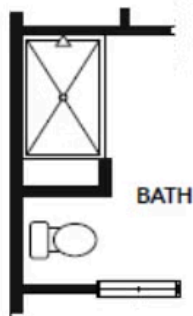
WWW.CESHOMES.COM



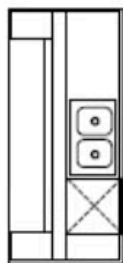
OPTIONS



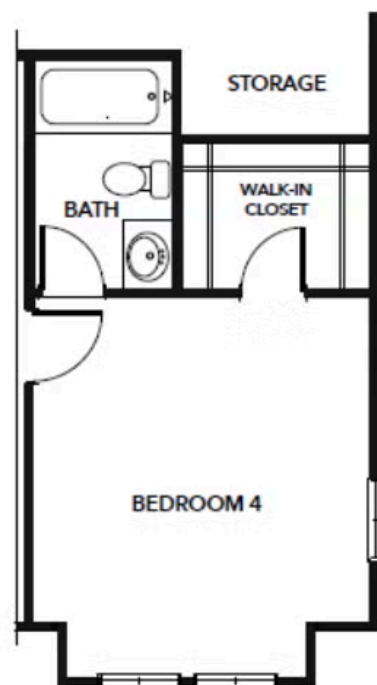
OPT. DELUXE
OWNER'S BATH 1



OPT. DELUXE
OWNER'S BATH 2



OPT. GOURMET
KITCHEN ISLAND



OPT. BEDROOM 4 WITH BATH

CONTACT US 757-550-2617

WWW.CESHOMES.COM

