



Welcome home to the Gala, a three-story townhome that combines function and style into your everyday life. With over 2,000 square feet holds up to 4 bedrooms and up to 3.5 bathrooms depending on the options you choose. The first floor holds a recreation room that can also be turned into another bedroom. On this floor, you also have access to your two-car garage. On the second floor, you will find a spacious living room, powder room, and dining room that is connected to your kitchen separated by a large island. On the third floor, you will find two bedrooms, your owner suite and bathroom which is available for upgrades, as well as another full bath and laundry room. The Gala is the perfect option for anyone looking for a spacious townhome living in a location second to none.



4 Bedrooms



3.5 Bathrooms



2,078 Sq.Ft.



3 Stories



2 Car Garage

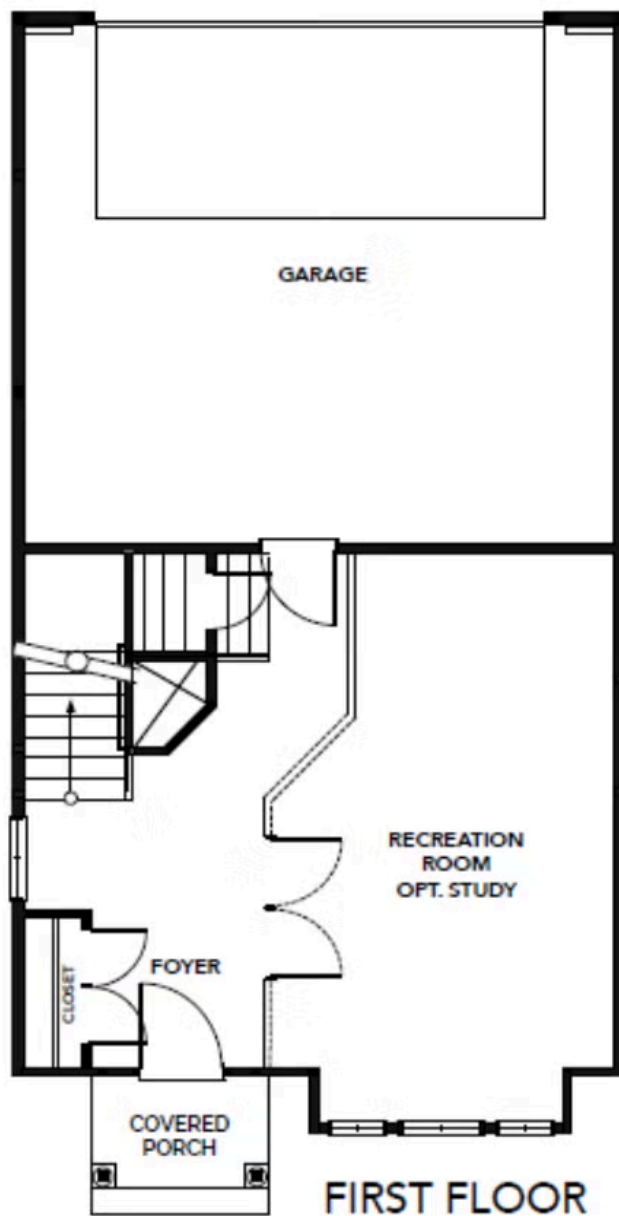
CONTACT US 757-550-2617

WWW.CESHOMES.COM



Chesapeake Homes continuously improves home designs and reserves the right to modify home features and specifications without notice or obligation. Square footage and measurements are approximate. Renderings of elevations are artist's concepts. Floor plans vary per elevation. Chesapeake Homes standard features vary by home design and location, please refer to the included features sheet for the community to define specifications. This brochure is for illustrative purposes and not part of the legal contract. Please ask Sales Associate for complete details. © 2025 Chesapeake Homes. Current information as 24th May 2025

FIRST FLOOR

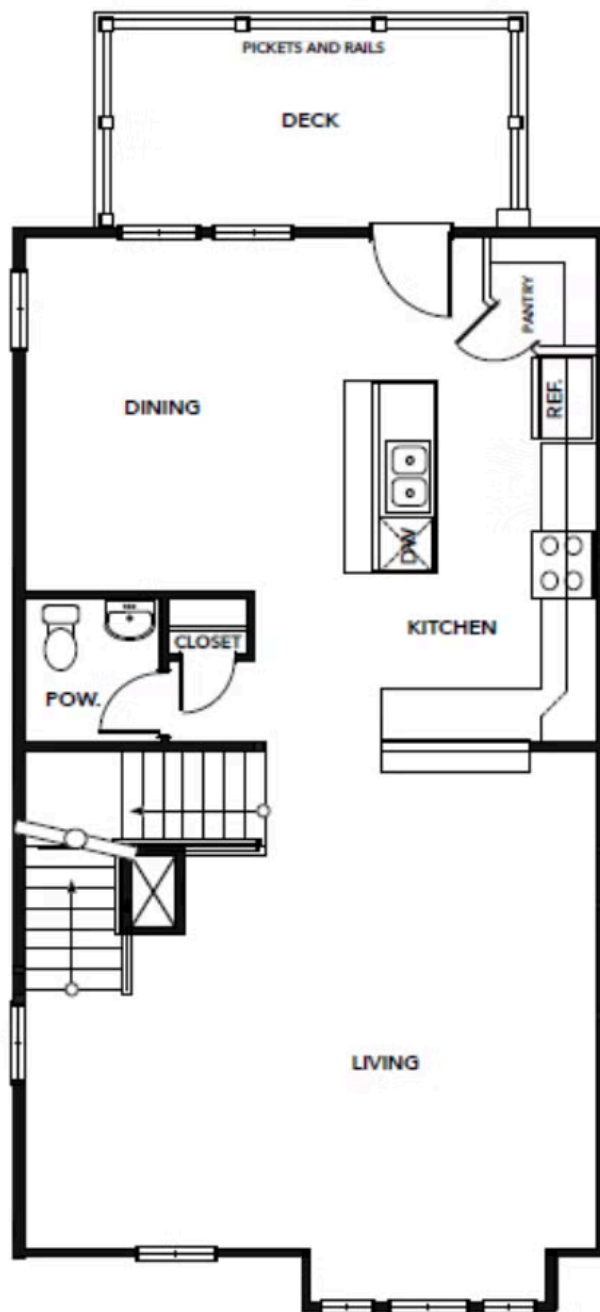


CONTACT US 757-550-2617

WWW.CESHOMES.COM



SECOND FLOOR



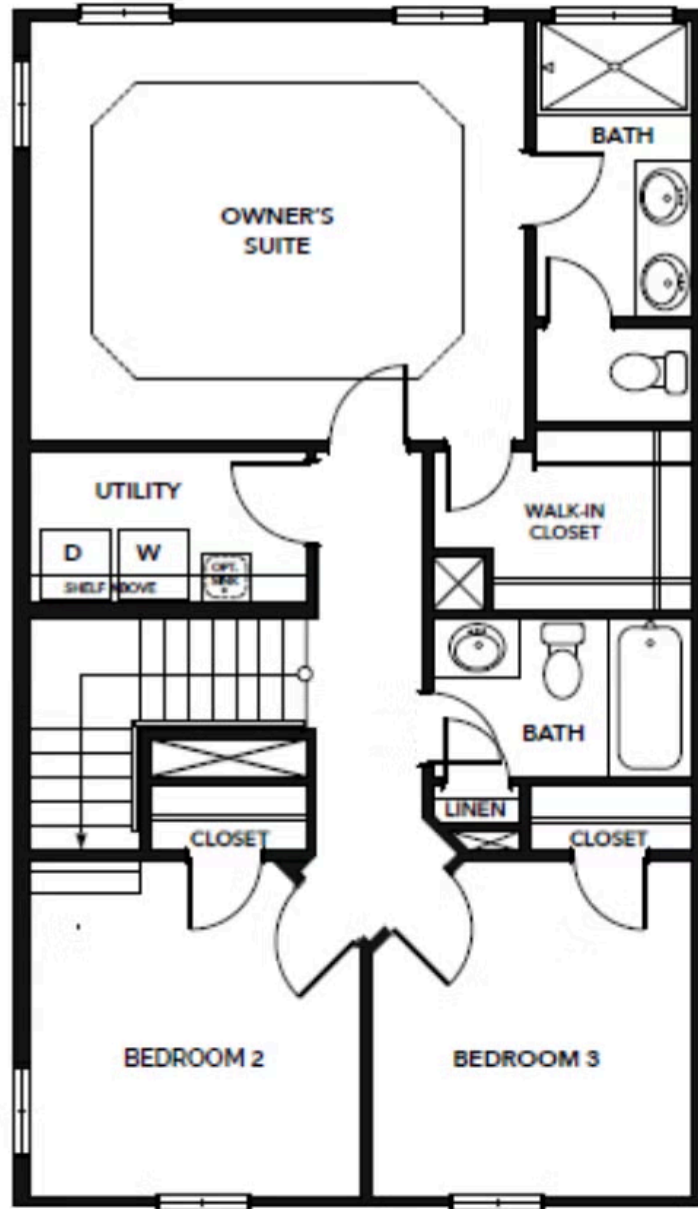
SECOND FLOOR

CONTACT US 757-550-2617

WWW.CESHOMES.COM



THIRD FLOOR



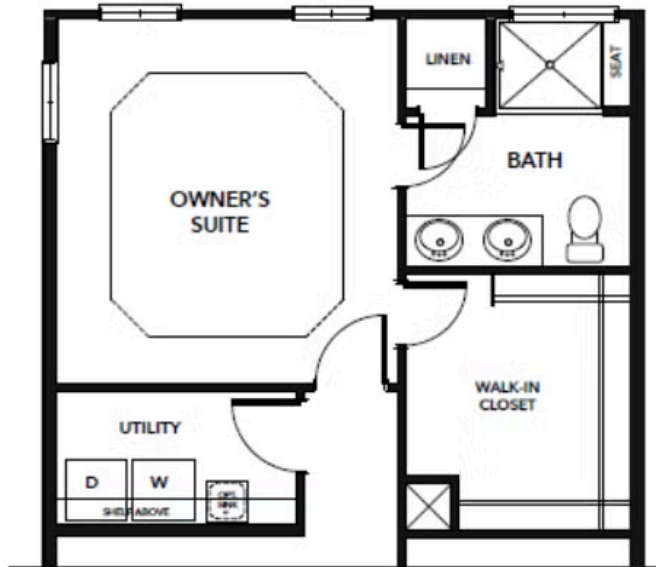
THIRD FLOOR

CONTACT US 757-550-2617

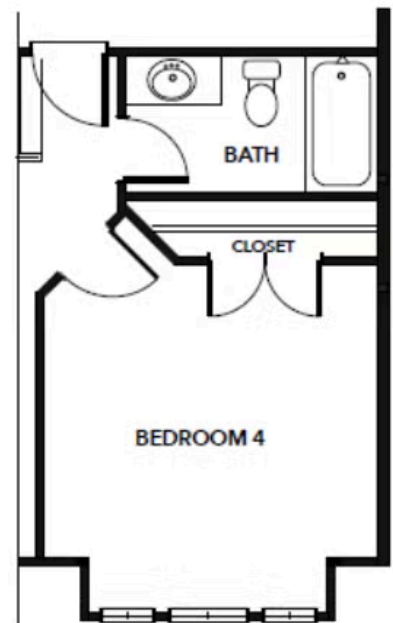
WWW.CESHOMES.COM



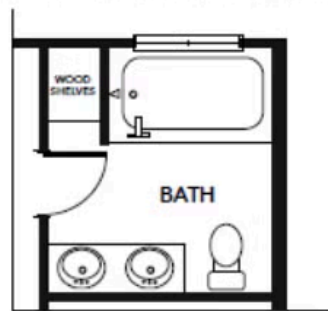
OPTIONS



OPT. DELUXE OWNER'S BATH #1



OPT. BEDROOM 4 WITH BATH



OPT. DELUXE OWNER'S BATH #2

CONTACT US 757-550-2617

WWW.CESHOMES.COM

