



Creekside Reserve Community

The Everest Floor Plan

The Everest floor plan lives up to its name, allowing every member of the family to experience spacious living. This prominent 3,351-square-foot home gives you an open-concept living area. It includes a great room connected to the gourmet kitchen, which includes a large gourmet island, double ovens, and a roomy pantry to the side. A guest suite and bathroom are found on the first floor, right past the drop zone located at the garage door. Upstairs you can find the additional 4 bedrooms, which include the Owner's Suite, styled with grand tray ceilings. This substantial owner's suite features two prominent walk-in closets, an attached deluxe bathroom with a double sink vanity, and a shower and bathtub setup. For your convenience, the laundry room is located right outside the Owner's Suite. A need for more closet space though? No problem, each of the additional rooms has its own walk-in closet. The second floor also houses a large full bathroom and a multi-purpose loft. This vast loft...

\$659,900



5 Bedrooms



3.0 Bathrooms



3,351 Sq.Ft.



2 Stories



2 Car Garage

CONTACT US 757-550-2617

WWW.CESHOMES.COM

FIRST FLOOR

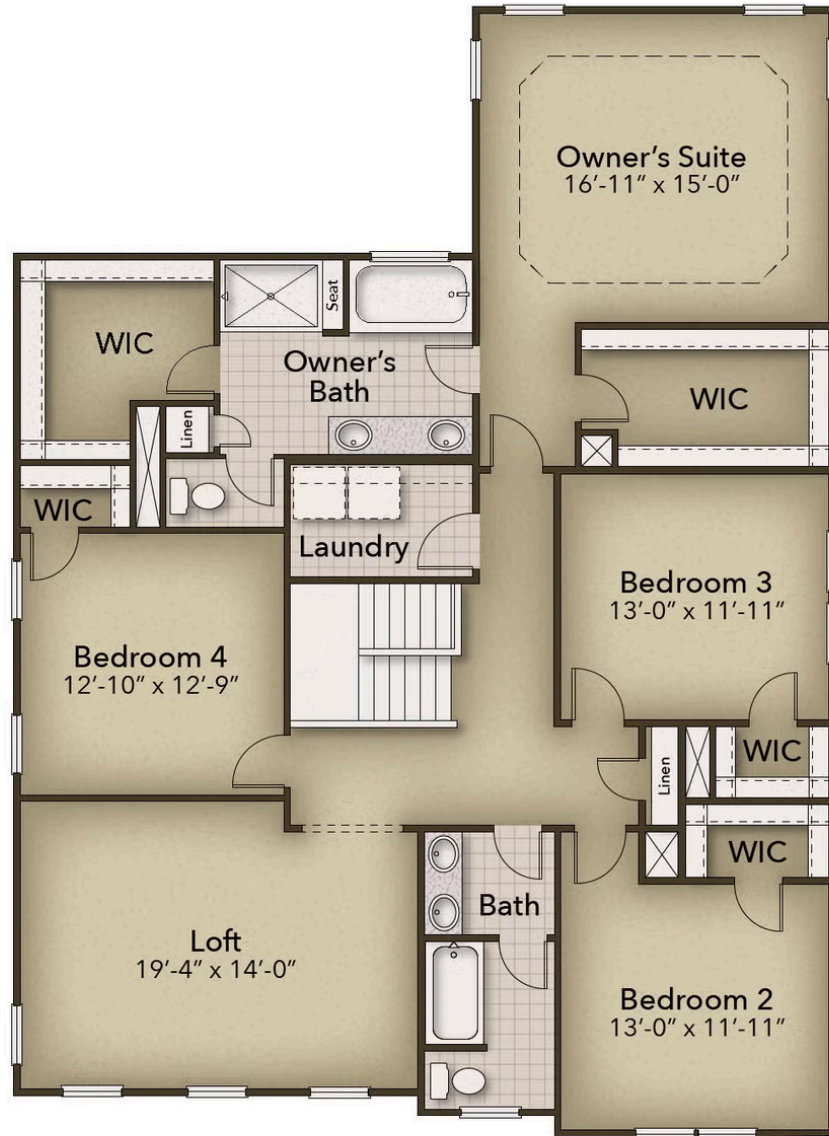


CONTACT US 757-550-2617

WWW.CESHOMES.COM



SECOND FLOOR



CONTACT US 757-550-2617

WWW.CESHOMES.COM

