



## Edgewater Community

### The Hawthorne Floor Plan

The Hawthorne is a beautifully designed home that offers comfort, flexibility, and plenty of room to grow. With 2,176 square feet of thoughtfully planned space, this floor plan includes four bedrooms, and two and half bathrooms. On the first floor, you'll find a spacious open concept living area where the great room, breakfast area, and kitchen flow seamlessly together, ideal for both everyday living and entertaining. Also downstairs, there's a formal dining room, a convenient powder room, and access to a two-car garage. Upstairs, all bedrooms are located together, including the impressive owner's suite with elevated tray ceilings, a large bathroom, and two walk-in closets. The laundry room is located just outside the suite for easy access, alongside three additional bedrooms and a full bath. The Hawthorne is a flexible, welcoming floor plan that adapts beautifully to your lifestyle, whether you're starting fresh, growing your family, or simply ready for something new.

\*Photos of of...

**\$487,900**



4 Bedrooms



2.5 Bathrooms



2,176 Sq.Ft.



2 Stories



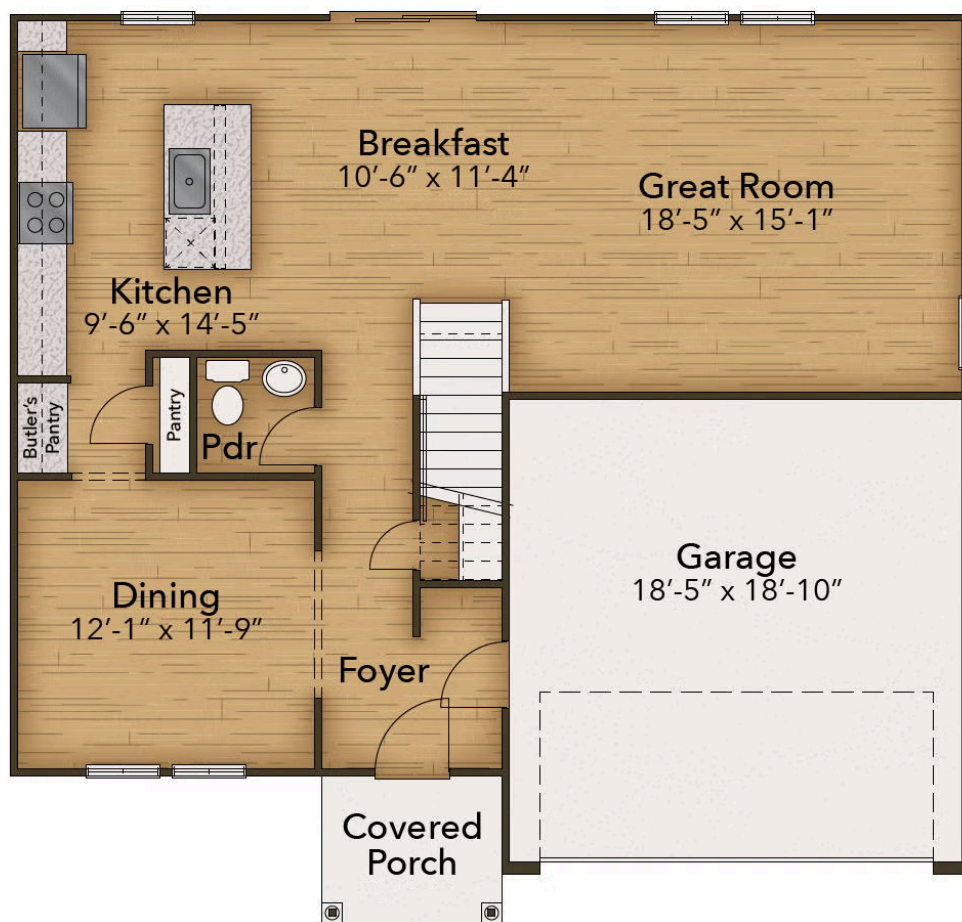
2 Car Garage

CONTACT US 757-550-2617

WWW.CESHOMES.COM



## FIRST FLOOR



CONTACT US 757-550-2617

WWW.CESHOMES.COM



## SECOND FLOOR



CONTACT US 757-550-2617

WWW.CESHOMES.COM

