



Edgewater Community

The Poppy Floor Plan

This nearly 2,500-square-foot home is the perfect choice for any family in search of a new place to call theirs. The Poppy is a spacious open-concept home with a total of five bedrooms. When you step off the covered front porch, you will step into a long foyer leading to the vast great room, dining room, and kitchen. While one bedroom and full bath are downstairs, up the stairs we find three more bedrooms with another full bath that is equipped with a double vanity. Continuing on the second floor is the vast owner's suite, including a huge walk-in closet. The owner's bathroom has 2 separate vanities with a large lower cabinet space connecting them for extra counter space. Right outside this suite is the laundry room, giving the owner's suite easy access to this space. Perfect for all, The Poppy allows activities to be streamlined within the home and provides peaceful rest for the days when you need it. *Photos of Similar Home Shown

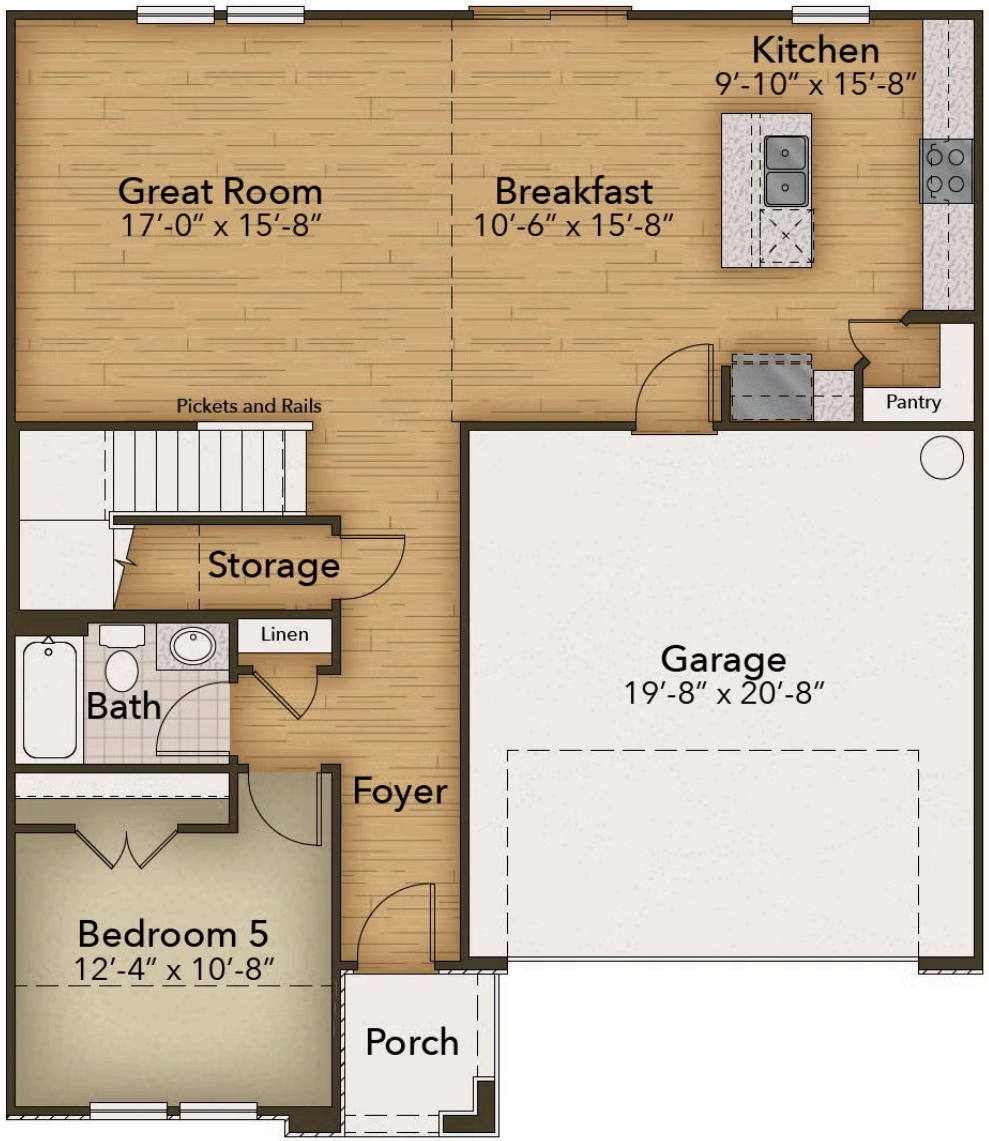
 5 Bedrooms

 3.0 Bathrooms

 2,427 Sq.Ft.

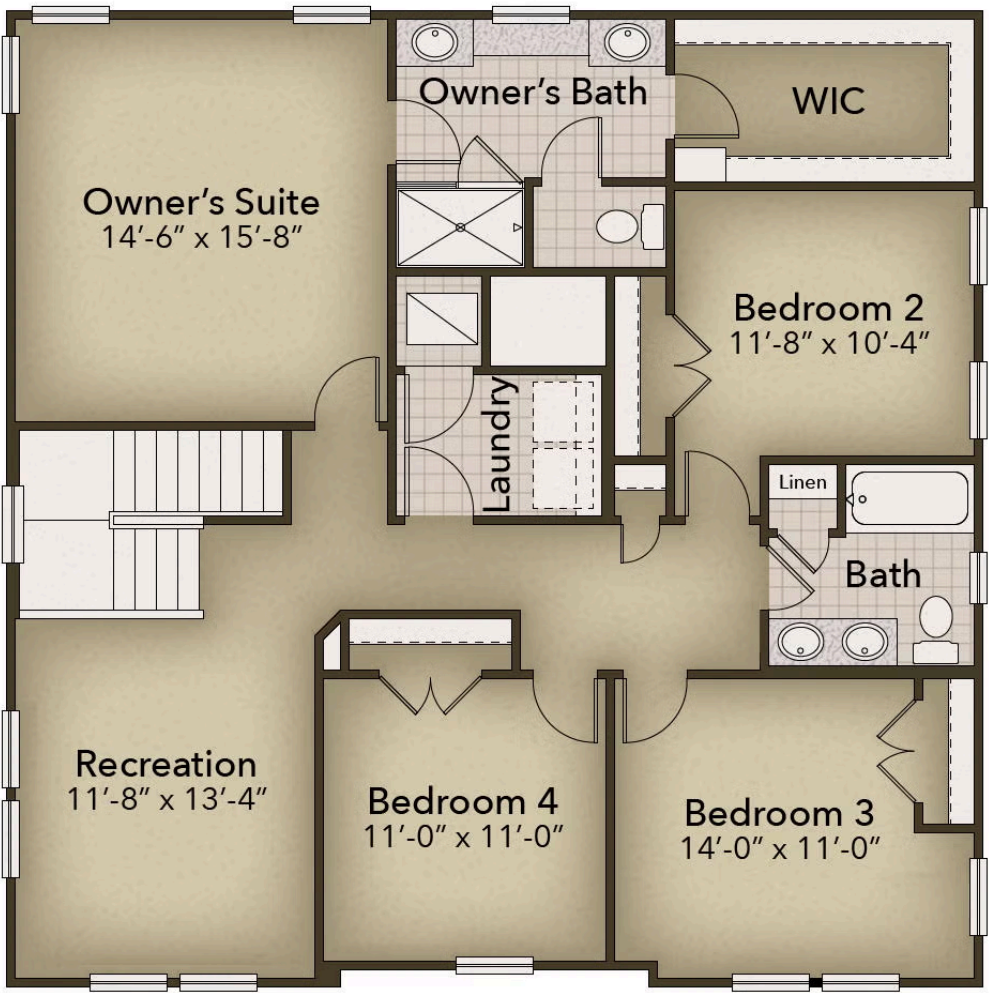
 2 Stories

FIRST FLOOR



CONTACT US 757-550-2617
WWW.CESHOMES.COM

SECOND FLOOR



CONTACT US 757-550-2617

WWW.CESHOMES.COM