



## Edgewater Community The Hawthorne Floor Plan

The Hawthorne is a beautifully designed home that offers comfort, flexibility, and plenty of room to grow. With 2,176 square feet of thoughtfully planned space, this floor plan includes three to four bedrooms, depending on your layout preferences. On the first floor, you'll find a spacious open concept living area where the great room, dinette, and kitchen flow seamlessly together, ideal for both everyday living and entertaining. Love to cook? Choose the gourmet kitchen option featuring double ovens and a gourmet island. Also downstairs, there's a formal dining room that can be converted into a private study, a convenient powder room, and access to a two-car garage. Want to enjoy meals outside? Consider adding a sunroom or covered porch for the perfect outdoor dining experience. Upstairs, all bedrooms are located together, including the impressive owner's suite with optional tray ceilings, a large bathroom with deluxe upgrade options, and two walk-in closets. The laundry room is...



4 Bedrooms



2.5 Bathrooms



2,176 Sq.Ft.



2 Stories



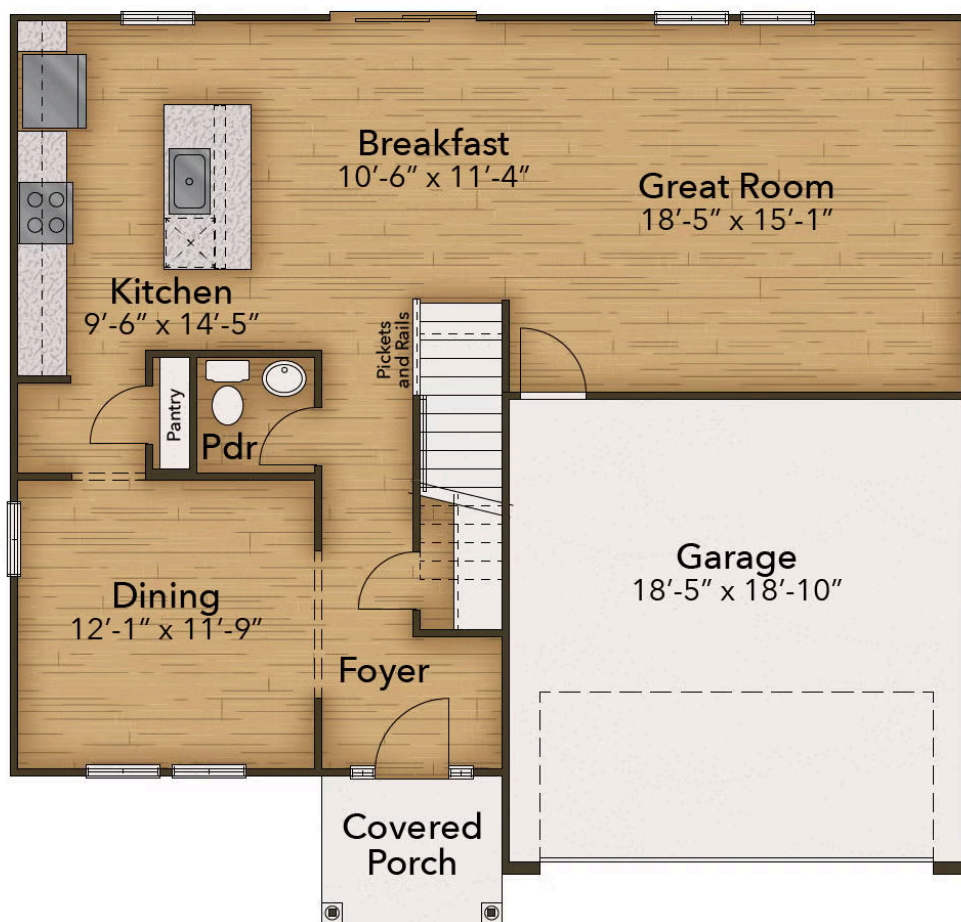
2 Car Garage

CONTACT US 757-550-2617

WWW.CESHOMES.COM



## FIRST FLOOR



CONTACT US 757-550-2617

WWW.CESHOMES.COM



## SECOND FLOOR



CONTACT US 757-550-2617

WWW.CESHOMES.COM

