



## Edgewater Community

### The Poppy Floor Plan

This nearly 2,500-square-foot home is the perfect choice for any family in search of a new place to call theirs. The Poppy is a spacious open-concept home with a total of five bedrooms. When you step off the covered front porch, you will step into a long foyer leading to the vast great room, dining room, and kitchen. Want to step up your cooking game or host a home warming party at the top of your to-do list? Upgrade to the gourmet kitchen or alternate kitchen layout which comes with various island options and stacked double ovens. Buyers can also find options for an extended back-covered porch or a fireplace in the great room. Each of these options helps you personalize the home to fit your specific needs. While one bedroom and full bath are downstairs, up the stairs we find three more bedrooms with another full bath that is equipped with a double vanity. Continuing on the second floor is the vast owner's suite, including a huge walk-in closet and optional tray ceilings. The...



5 Bedrooms



3.0 Bathrooms



2,427 Sq.Ft.



2 Stories



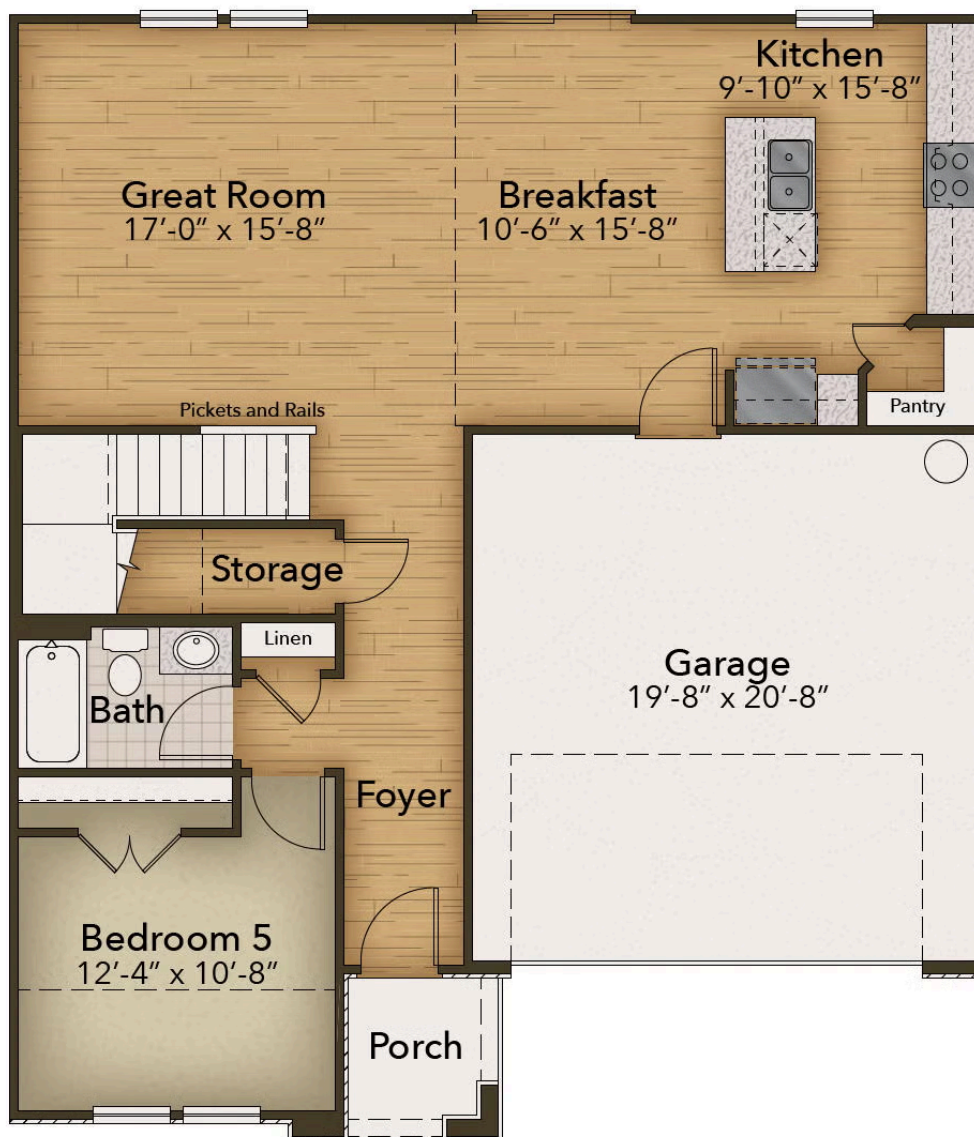
2 Car Garage

CONTACT US 757-550-2617

WWW.CESHOMES.COM



**FIRST FLOOR**



CONTACT US 757-550-2617

WWW.CESHOMES.COM



## SECOND FLOOR



CONTACT US 757-550-2617

WWW.CESHOMES.COM

