



Estates at River Club Community

The Bennett Floor Plan

\$909,900

Enter the beautiful Bennett Model from your covered front porch and take in the open-space floorplan. The Bennett features a large great room with stunning coffered ceilings. While kicking back and relaxing in your new great room, that favorite snack isn't far away as the kitchen blends into the floorplan, allowing for daily function. A beautiful gourmet island separates the gourmet kitchen, dining area, and drop zone from the other half of the first floor. But the first floor of The Bennett doesn't stop there! With the owner's suite located on this level, your day-to-day tasks have never been this easy, especially with the easy access flow of bedroom to bathroom to laundry room. Plus you will fall in love with the huge walk-in closet connected to the owner's bathroom. The Bennett features an additional bedroom with a private full bath attached. Perfect for when guests from out of town need a place to stay. The second floor of The Bennett is just as gorgeous as the first. This level...



5 Bedrooms



3.5 Bathrooms



3,489 Sq.Ft.



2 Stories



3 Car Garage

CONTACT US 757-550-2617

WWW.CESHOMES.COM



FIRST FLOOR

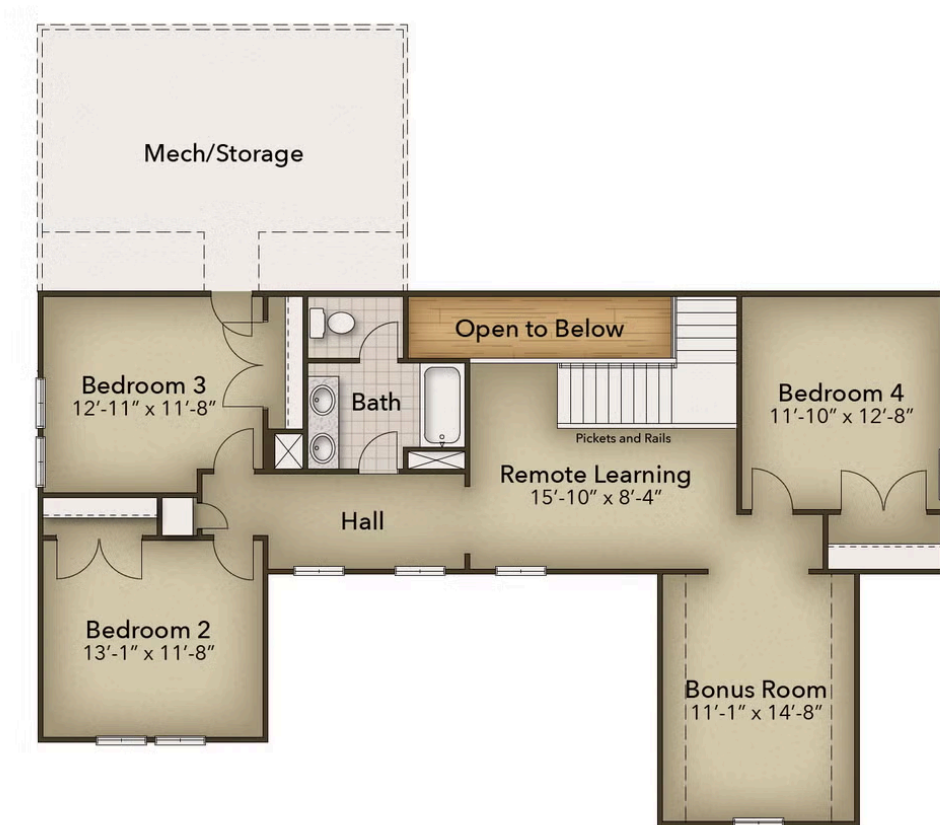


CONTACT US 757-550-2617

WWW.CESHOMES.COM



SECOND FLOOR



CONTACT US 757-550-2617

WWW.CESHOMES.COM

