



River Club - The Legacy Collection Community

The Roseleigh Floor Plan

The Roseleigh is a buyer favorite for a reason! The spacious 3,309 square feet holds space for five bedrooms and four full bathrooms. Once you walk in the door the main foyer divides the formal dining room from the study. Continue down the hall to the open-concept kitchen, great room, and breakfast nook with access to the back patio. Additionally on the first floor is the guest suite and bathroom, the drop zone bench, and the garage access door. The spacious second level makes sure everyone in your family has their own place. To the left of this floor are three bedrooms, two full baths, and the laundry room. To the right by the open loft is the Owner's Suite. This beautiful room with tray ceilings, dual walk-in closets, and an attached deluxe spa-inspired bathroom with a dual sink vanity is the perfect spot to relax after a long day on the run. This floor plan is interactive and allows those who choose the Roseleigh to create their own oasis at home. *Photos of Similar Home Shown



5 Bedrooms



4.0 Bathrooms



3,309 Sq.Ft.



2 Stories



2 Car Garage

FIRST FLOOR

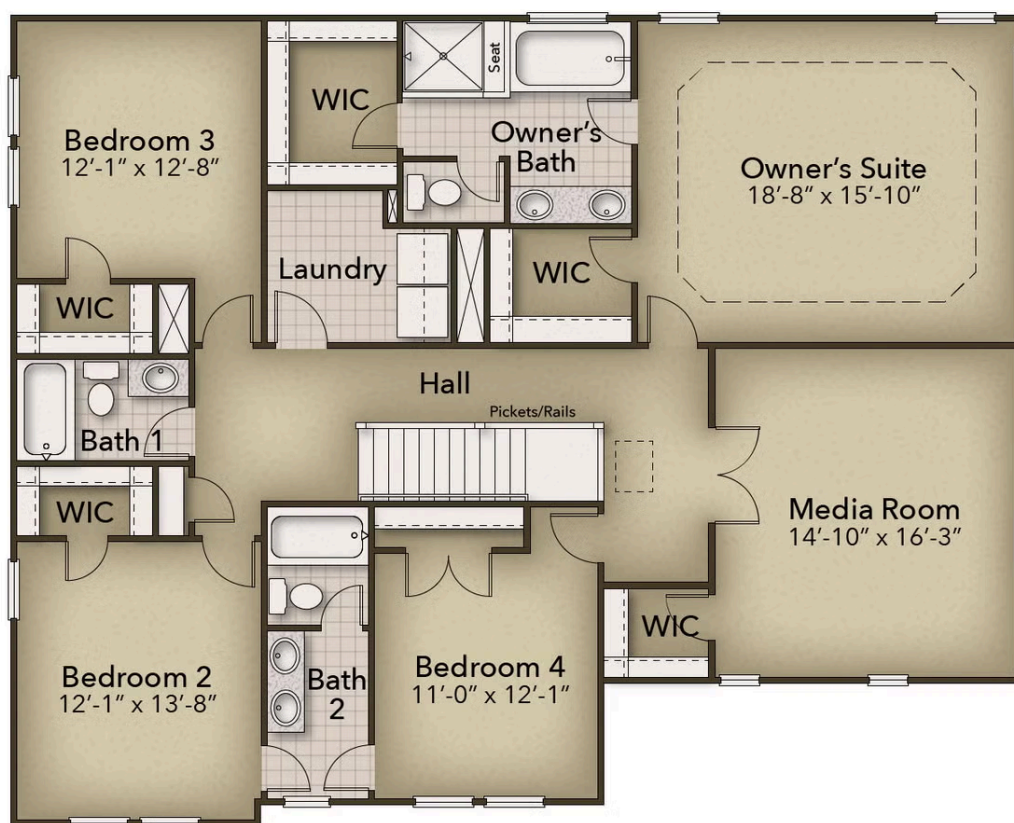


CONTACT US 757-550-2617

WWW.CESHOMES.COM



SECOND FLOOR



CONTACT US 757-550-2617

WWW.CESHOMES.COM

