



*From \$699,900*

The Roseleigh is a buyer favorite for a reason! The spacious 3,914 square feet offers the flexibility today's households need, with space for six bedrooms and four full bathrooms. Once you walk in the door the main foyer divides the formal dining room from the study. Continue down the hall to the open-concept kitchen, great room, and breakfast nook with access to the back patio. An optional extended breakfast area with an alternate kitchen layout that features a large food pantry and butler's pantry is available. Or if you want more natural light, you can add an attached sunroom that connects to the patio. Additionally, on the first floor is the drop zone bench and garage access door, along with a private multi-gen living area. Designed with versatility in mind, the multi-gen suite creates a comfortable and private area for extended family or long-term guests, complete with a bedroom, full bath, additional living space, and a kitchenette. This space is perfect for maintaining independence while staying connected under one roof. The spacious second level makes sure everyone in your family has their own place. To ...

 5 Bedrooms

 4.5 Bathrooms

 3,914 Sq. Ft.

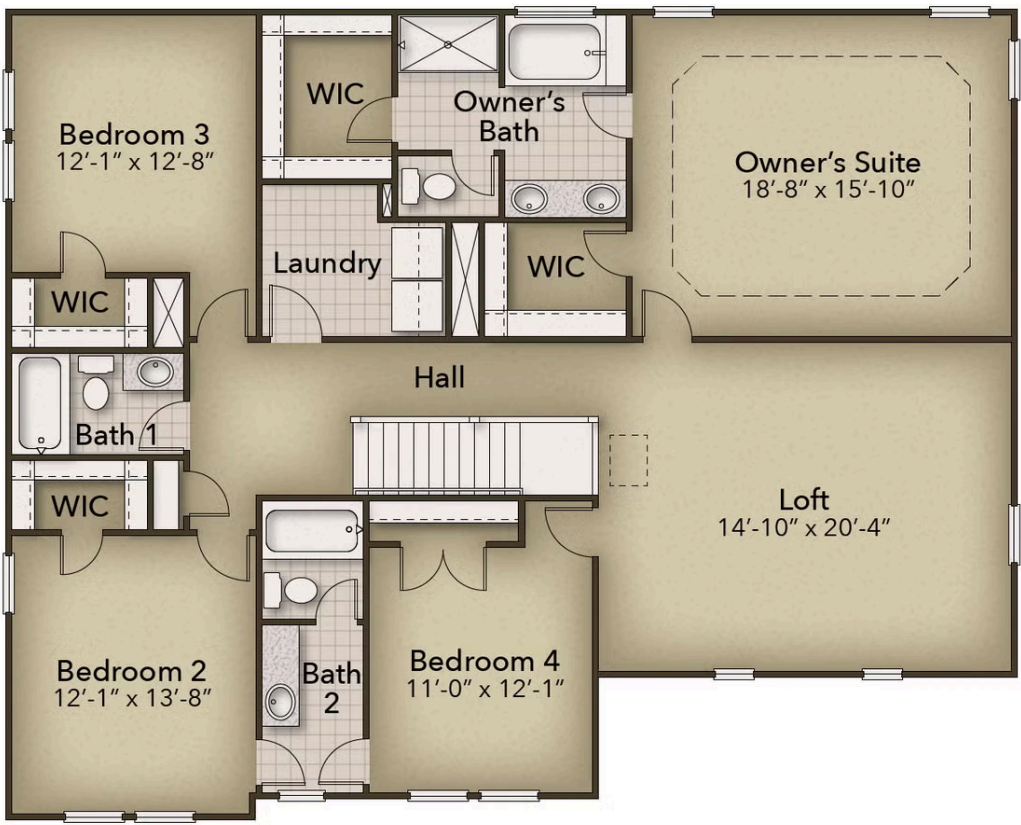
 2 Stories

FIRST FLOOR



CONTACT US 757-550-2617  
WWW.CESHOMES.COM

**SECOND FLOOR**



**CONTACT US 757-550-2617**  
**WWW.CHESHOMES.COM**