



## River Club Community

### The Roseleigh Floor Plan

The Roseleigh is a buyer favorite for a reason! The spacious 3,924 square feet holds space for five bedrooms and four full bathrooms. Once you walk in the door the main foyer divides the formal dining room from the study. Continue down the hall to the open-concept kitchen, great room, and breakfast nook with access to the rear covered porch. Additionally on the first floor is the multi-gen suite with a bedroom, full bath, and additional living space, the drop zone bench, and the garage access door. The spacious second level makes sure everyone in your family has their own place, it opens to the media room. To the left are three bedrooms, two full baths, and the laundry room. To the right by the media room is the Owner's Suite. This beautiful room with its tray ceilings, dual walk-in closets, and attached spa-like bathroom choices with a dual sink vanity, it's the perfect spot to relax after a long day on the run. If more bedrooms are what you need the loft area can be customized to...



5 Bedrooms



4.5 Bathrooms



3,924 Sq.Ft.



2 Stories



3 Car Garage

CONTACT US 757-550-2617

WWW.CHESHOMES.COM



## FIRST FLOOR



CONTACT US 757-550-2617

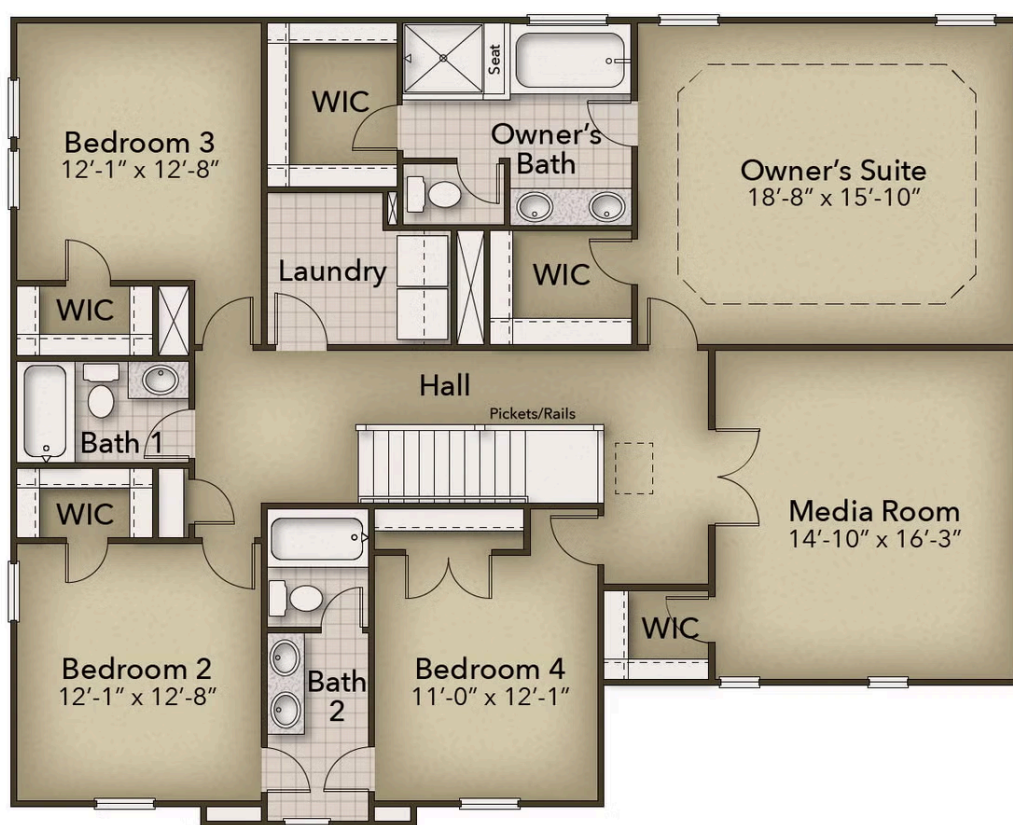
WWW.CHESHOMES.COM



Chesapeake Homes continuously improves home designs and reserves the right to modify home features and specifications without notice or obligation. Square footage and measurements are approximate. Renderings of elevations are artist's concepts. Floor plans vary per elevation. Chesapeake Homes standard features vary by home design and location, please refer to the included features sheet for the community to define specifications. This brochure is for illustrative purposes and not part of the legal contract. Please ask Sales Associate for complete details. © 2025 Chesapeake Homes. Current information as 19th December 2025



## SECOND FLOOR



CONTACT US 757-550-2617

WWW.CHESHOMES.COM

