



## River Club Community

### The Roseleigh Floor Plan

The Roseleigh is a buyer favorite for a reason! The spacious 3,319 square feet has five bedrooms and four full bathrooms. Once you walk in the door the main foyer divides the formal dining room from the study. Continue down the hall to the open-concept kitchen, great room, and breakfast nook with access to the rear covered porch and back patio. Additionally, on the first floor is the guest suite and full bathroom, the drop zone bench, and the garage access door. The spacious second level makes sure everyone in your family has their own place. To the left of this floor are three bedrooms, a hall bathroom and a Jack and Jill Bathroom between 2 Bedrooms, perfect for 2 kids getting ready, and the laundry room. To the right by the media room is the Owner's Suite. This beautiful room with its tray ceilings, dual walk-in closets, and attached spa-like bathroom choices with a dual sink vanity it's the perfect spot to relax after a long day on the run. \*Photos of Similar House Shown



5 Bedrooms



4.0 Bathrooms



3,319 Sq.Ft.



2 Stories



2 Car Garage

CONTACT US 757-550-2617

WWW.CHESHOMES.COM



Chesapeake Homes continuously improves home designs and reserves the right to modify home features and specifications without notice or obligation. Square footage and measurements are approximate. Renderings of elevations are artist's concepts. Floor plans vary per elevation. Chesapeake Homes standard features vary by home design and location, please refer to the included features sheet for the community to define specifications. This brochure is for illustrative purposes and not part of the legal contract. Please ask Sales Associate for complete details. © 2026 Chesapeake Homes. Current information as 20th February 2026

## FIRST FLOOR



CONTACT US 757-550-2617

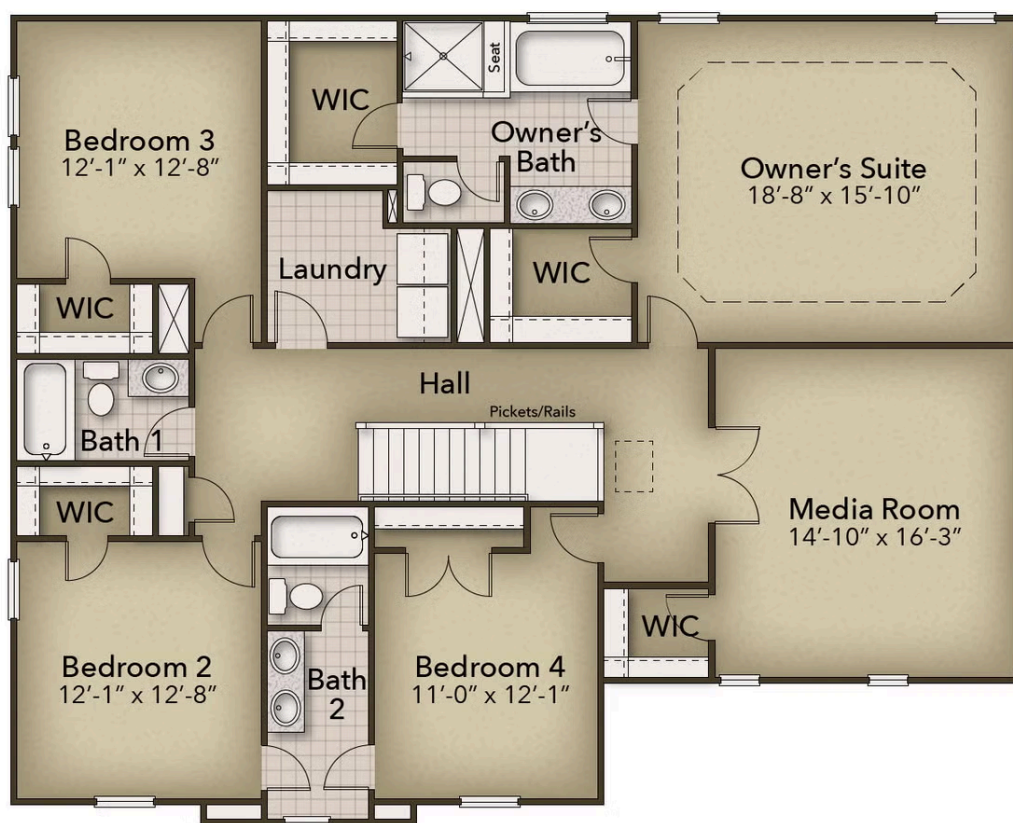
WWW.CESHOMES.COM



Chesapeake Homes continuously improves home designs and reserves the right to modify home features and specifications without notice or obligation. Square footage and measurements are approximate. Renderings of elevations are artist's concepts. Floor plans vary per elevation. Chesapeake Homes standard features vary by home design and location, please refer to the included features sheet for the community to define specifications. This brochure is for illustrative purposes and not part of the legal contract. Please ask Sales Associate for complete details. © 2026 Chesapeake Homes. Current information as 20th February 2026



## SECOND FLOOR



CONTACT US 757-550-2617

WWW.CHESHOMES.COM

