



## River Club Community

### The Roseleigh Floor Plan

The Roseleigh is a buyer favorite for a reason! The spacious 3,319 square feet holds four full bathrooms. As you step through the front door, the foyer separates the formal dining room from the study, featuring French doors for added sophistication. Continue down the hall to the open-concept kitchen, complete with a spacious food pantry, butler's pantry, and a seamless view of the great room and its inviting fireplace. The extended breakfast nook offers a perfect spot for casual dining, with easy access to the back covered porch. Additionally, on the first floor is the guest suite and full bathroom, the drop zone bench, and the garage access door. The spacious second level ensures that everyone in your family has their own space. To the left of this floor are three bedrooms and two full baths. To the right of the media room is the Owner's Suite. This beautiful room with its tray ceilings, walk-in closet, and deluxe, spa-like bathroom with a dual sink vanity it's the perfect spot...

**\$714,900**



**5 Bedrooms**



**4.0 Bathrooms**



**3,319 Sq.Ft.**



**2 Stories**



**2 Car Garage**

**CONTACT US 757-550-2617**

**WWW.CESHOMES.COM**



Chesapeake Homes continuously improves home designs and reserves the right to modify home features and specifications without notice or obligation. Square footage and measurements are approximate. Renderings of elevations are artist's concepts. Floor plans vary per elevation. Chesapeake Homes standard features vary by home design and location, please refer to the included features sheet for the community to define specifications. This brochure is for illustrative purposes and not part of the legal contract. Please ask Sales Associate for complete details. © 2026 Chesapeake Homes. Current information as 20th February 2026

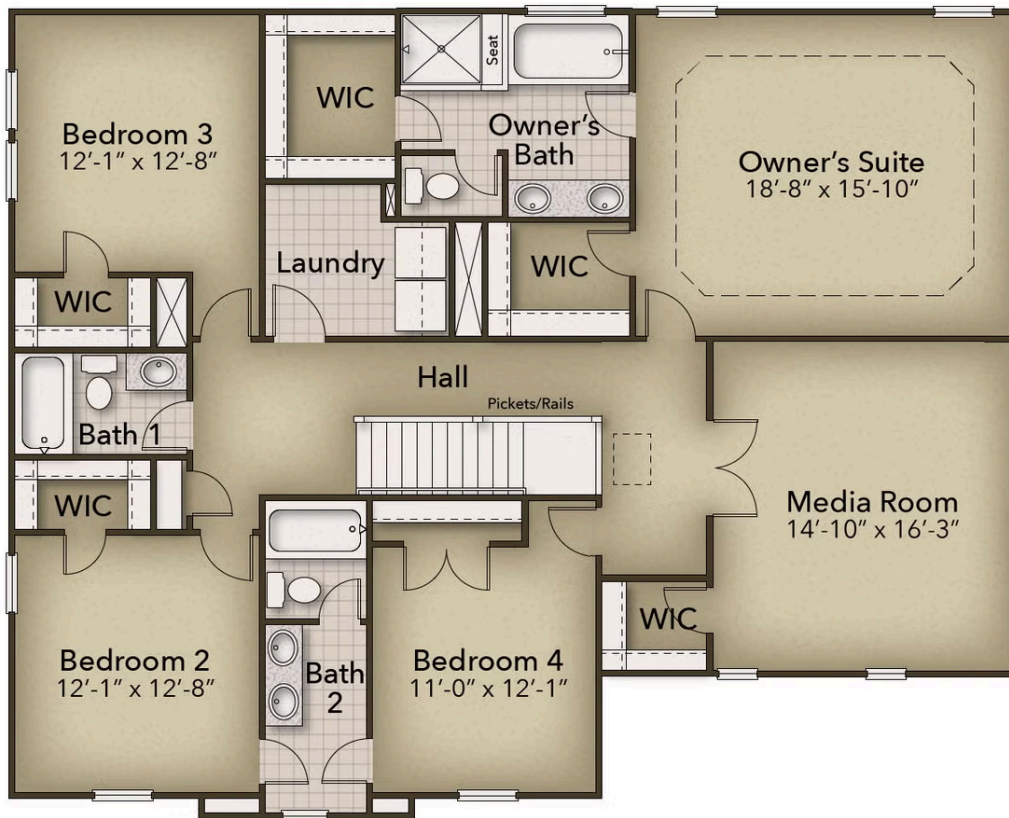


CONTACT US 757-550-2617

WWW.CESHOMES.COM



Chesapeake Homes continuously improves home designs and reserves the right to modify home features and specifications without notice or obligation. Square footage and measurements are approximate. Renderings of elevations are artist's concepts. Floor plans vary per elevation. Chesapeake Homes standard features vary by home design and location, please refer to the included features sheet for the community to define specifications. This brochure is for illustrative purposes and not part of the legal contract. Please ask Sales Associate for complete details. © 2026 Chesapeake Homes. Current information as 20th February 2026



CONTACT US 757-550-2617

WWW.CESHOMES.COM



Chesapeake Homes continuously improves home designs and reserves the right to modify home features and specifications without notice or obligation. Square footage and measurements are approximate. Renderings of elevations are artist's concepts. Floor plans vary per elevation. Chesapeake Homes standard features vary by home design and location, please refer to the included features sheet for the community to define specifications. This brochure is for illustrative purposes and not part of the legal contract. Please ask Sales Associate for complete details. © 2026 Chesapeake Homes. Current information as 20th February 2026