



## River Club Community

### The Iris Floor Plan

Wondering how you can live large in a two-story home? The answer is The Iris! With 3,368 square feet of thoughtfully designed space, this layout revolves around a spacious central great room. The open-concept design seamlessly connects the great room to the kitchen and breakfast nook, separated by a large island with ample seating – perfect for entertaining or everyday living. On the first floor, you'll find the Owner's Suite, featuring elegant tray ceilings, a generous walk-in closet, and a deluxe spa-like bathroom. An additional bedroom, a versatile Drop Zone, and a convenient Laundry Room are also located on this level, ensuring comfort and practicality. Need even more space? No problem! The second floor offers two more bedrooms, a full bathroom, and a large loft, providing your guests with privacy and relaxation. And when it's time to unwind, you have options – sip your morning coffee on the charming covered front porch or kick back on the peaceful covered back porch. With The Iris, every detail is designed ...

**\$784,900**



**4 Bedrooms**



**3.0 Bathrooms**



**3,368 Sq.Ft.**



**2 Stories**



**2 Car Garage**

**CONTACT US 757-550-2617**

**WWW.CESHOMES.COM**



Chesapeake Homes continuously improves home designs and reserves the right to modify home features and specifications without notice or obligation. Square footage and measurements are approximate. Renderings of elevations are artist's concepts. Floor plans vary per elevation. Chesapeake Homes standard features vary by home design and location, please refer to the included features sheet for the community to define specifications. This brochure is for illustrative purposes and not part of the legal contract. Please ask Sales Associate for complete details. © 2025 Chesapeake Homes. Current information as 12th September 2025

## FIRST FLOOR



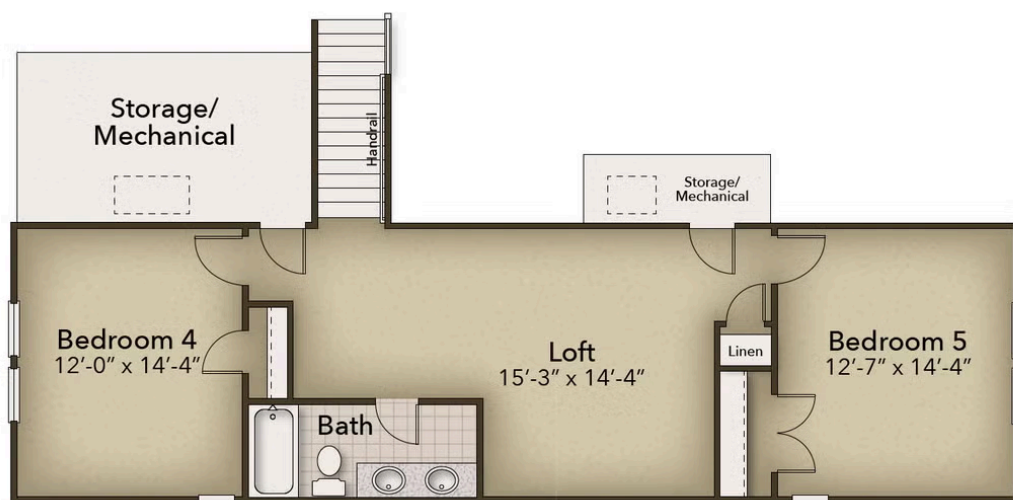
CONTACT US 757-550-2617

WWW.CHESHOMES.COM



Chesapeake Homes continuously improves home designs and reserves the right to modify home features and specifications without notice or obligation. Square footage and measurements are approximate. Renderings of elevations are artist's concepts. Floor plans vary per elevation. Chesapeake Homes standard features vary by home design and location, please refer to the included features sheet for the community to define specifications. This brochure is for illustrative purposes and not part of the legal contract. Please ask Sales Associate for complete details. © 2025 Chesapeake Homes. Current information as 12th September 2025

## SECOND FLOOR



CONTACT US 757-550-2617

WWW.CHESHOMES.COM



Chesapeake Homes continuously improves home designs and reserves the right to modify home features and specifications without notice or obligation. Square footage and measurements are approximate. Renderings of elevations are artist's concepts. Floor plans vary per elevation. Chesapeake Homes standard features vary by home design and location, please refer to the included features sheet for the community to define specifications. This brochure is for illustrative purposes and not part of the legal contract. Please ask Sales Associate for complete details. © 2025 Chesapeake Homes. Current information as 12th September 2025