



River Club Community

The Iris Floor Plan

This layout offers over 3,000 square feet of home all spaciously arranged around a central great room. In an open-concept design, the great room is attached to the kitchen and the breakfast nook all separated by a large island with upgrades to a gourmet kitchen layout that includes double ovens. With the Owner's Suite, a second bedroom, two full bathrooms, and a combination Drop Zone and Laundry room all on the first floor, this home is created with your comfort and space in mind. This home also features an extended breakfast nook, a butler's pantry, a two-car garage, and a second floor. The Owner's Suite has all the must-have features, such as a walk-in closet, and a double bathroom vanity. Before you retire for the night to the Owner's Suite, enjoy the day by spending it on the charming covered front porch or kicking up your feet on the relaxing covered back porch. Create the home of your dreams with The Iris.

\$749,900



4 Bedrooms



3.0 Bathrooms



3,368 Sq.Ft.



2 Stories



2 Car Garage

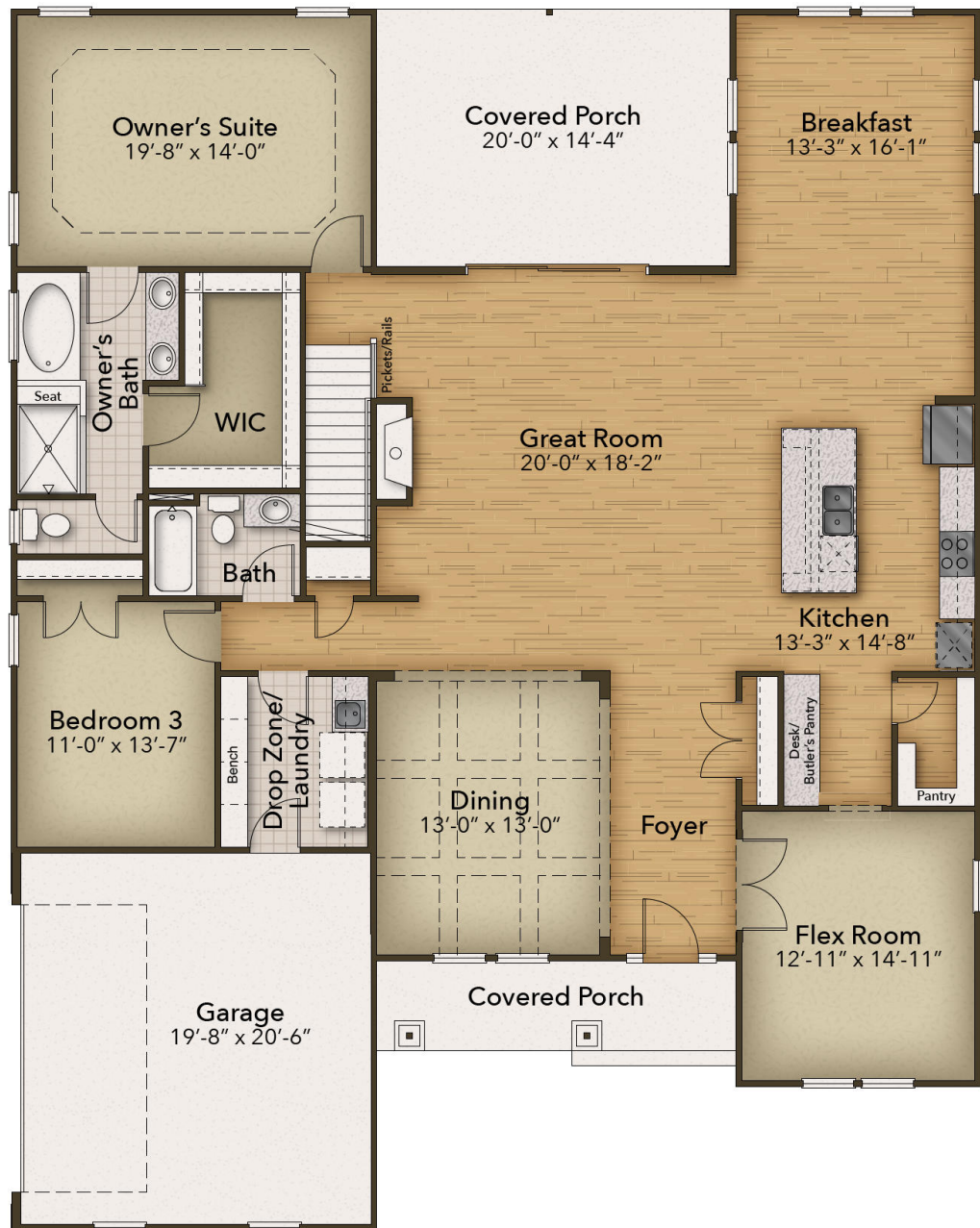
CONTACT US 757-550-2617

WWW.CESHOMES.COM



Chesapeake Homes continuously improves home designs and reserves the right to modify home features and specifications without notice or obligation. Square footage and measurements are approximate. Renderings of elevations are artist's concepts. Floor plans vary per elevation. Chesapeake Homes standard features vary by home design and location, please refer to the included features sheet for the community to define specifications. This brochure is for illustrative purposes and not part of the legal contract. Please ask Sales Associate for complete details. © 2024 Chesapeake Homes. Current information as 18th May 2024

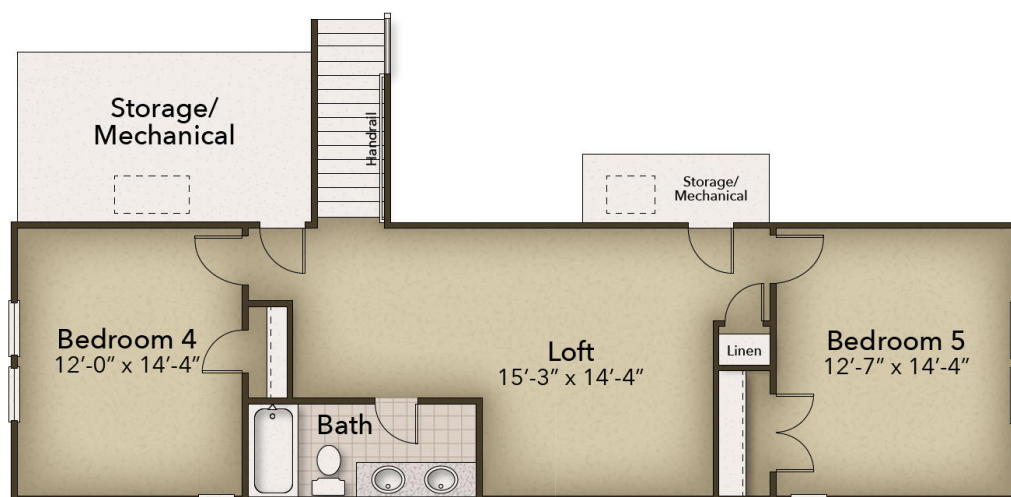
FIRST FLOOR



CONTACT US 757-550-2617

WWW.CESHOMES.COM

SECOND FLOOR



CONTACT US 757-550-2617

WWW.CESHOMES.COM



Chesapeake Homes continuously improves home designs and reserves the right to modify home features and specifications without notice or obligation. Square footage and measurements are approximate. Renderings of elevations are artist's concepts. Floor plans vary per elevation. Chesapeake Homes standard features vary by home design and location, please refer to the included features sheet for the community to define specifications. This brochure is for illustrative purposes and not part of the legal contract. Please ask Sales Associate for complete details. © 2024 Chesapeake Homes. Current information as 18th May 2024