



## River Club Community

### The Bennett Floor Plan

Enter the beautiful Bennett from your covered front porch and take in the open-space floorplan. The Bennett features a large great room with gorgeous tall ceilings. While kicking back and relaxing in your new great room, that favorite snack isn't far away as the kitchen blends into the floorplan, allowing for daily function. A beautiful island separates the kitchen, dining area, and drop zone from the other half of the first floor. But the first floor of The Bennett doesn't stop there! With the owner's suite located on this level, your day-to-day tasks have never been this easy, especially with the easy access flow of bedroom to bathroom to laundry room. Plus you will fall in love with the huge walk-in closet connected to the owner's bathroom. Lastly, on the first floor, The Bennett features an additional bedroom with a private full bath attached. Perfect for when guests from out of town need a place to stay. The second floor of The Bennett is just as gorgeous as the first. This...



5 Bedrooms



3.5 Bathrooms



3,489 Sq.Ft.



2 Stories



3 Car Garage

CONTACT US 757-550-2617

WWW.CHESHOMES.COM



Chesapeake Homes continuously improves home designs and reserves the right to modify home features and specifications without notice or obligation. Square footage and measurements are approximate. Renderings of elevations are artist's concepts. Floor plans vary per elevation. Chesapeake Homes standard features vary by home design and location, please refer to the included features sheet for the community to define specifications. This brochure is for illustrative purposes and not part of the legal contract. Please ask Sales Associate for complete details. © 2025 Chesapeake Homes. Current information as 29th December 2025

## FIRST FLOOR



CONTACT US 757-550-2617

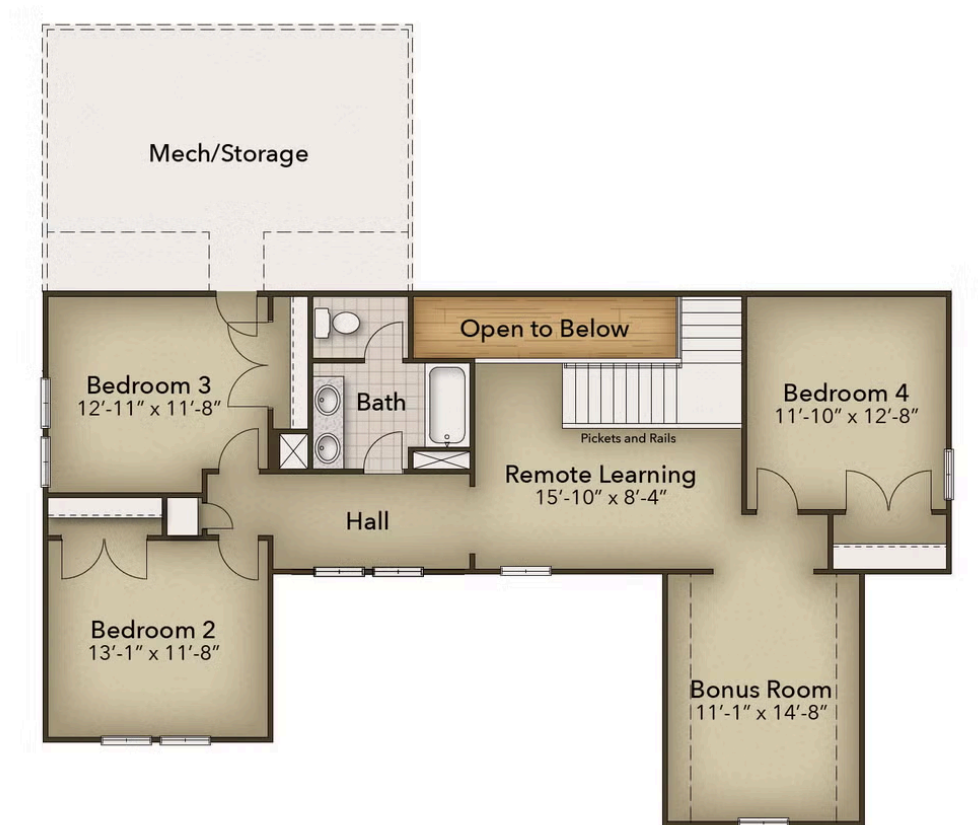
WWW.CHESHOMES.COM



Chesapeake Homes continuously improves home designs and reserves the right to modify home features and specifications without notice or obligation. Square footage and measurements are approximate. Renderings of elevations are artist's concepts. Floor plans vary per elevation. Chesapeake Homes standard features vary by home design and location, please refer to the included features sheet for the community to define specifications. This brochure is for illustrative purposes and not part of the legal contract. Please ask Sales Associate for complete details. © 2025 Chesapeake Homes. Current information as 29th December 2025



## SECOND FLOOR



CONTACT US 757-550-2617

WWW.CESHOMES.COM



Chesapeake Homes continuously improves home designs and reserves the right to modify home features and specifications without notice or obligation. Square footage and measurements are approximate. Renderings of elevations are artist's concepts. Floor plans vary per elevation. Chesapeake Homes standard features vary by home design and location, please refer to the included features sheet for the community to define specifications. This brochure is for illustrative purposes and not part of the legal contract. Please ask Sales Associate for complete details. © 2025 Chesapeake Homes. Current information as 29th December 2025