



River Club Community

The Azalea Floor Plan

Welcome to The Azalea model! This open-concept plan allows for natural lighting to fill the 3,016 square feet of space it offers. The spacious great room, with built in gas fireplace, flows right into the kitchen separated only by a large island and breakfast nook. It's the perfect place to entertain family and friends. The first-floor layout continues to expand past the living area into a guest suite. This bedroom is fitted with a generously sized closet with an attached full bathroom. Now head to the second floor up the stairs and open the double doors to your Owner's Suite. This personal sanctuary has plenty of space with two walk-in closets, a sitting area, and an extensive spa-inspired deluxe bathroom. No worries about a crowded morning bathroom routine here, with a double sink vanity, linen closet, and separate toilet area. Three additional bedrooms, each with sizable closets, and two full bathrooms can also be found on the second floor. The laundry room is also located on...



5 Bedrooms



4.5 Bathrooms



3,016 Sq.Ft.



2 Stories



2 Car Garage

CONTACT US 757-550-2617

WWW.CESHOMES.COM



FIRST FLOOR

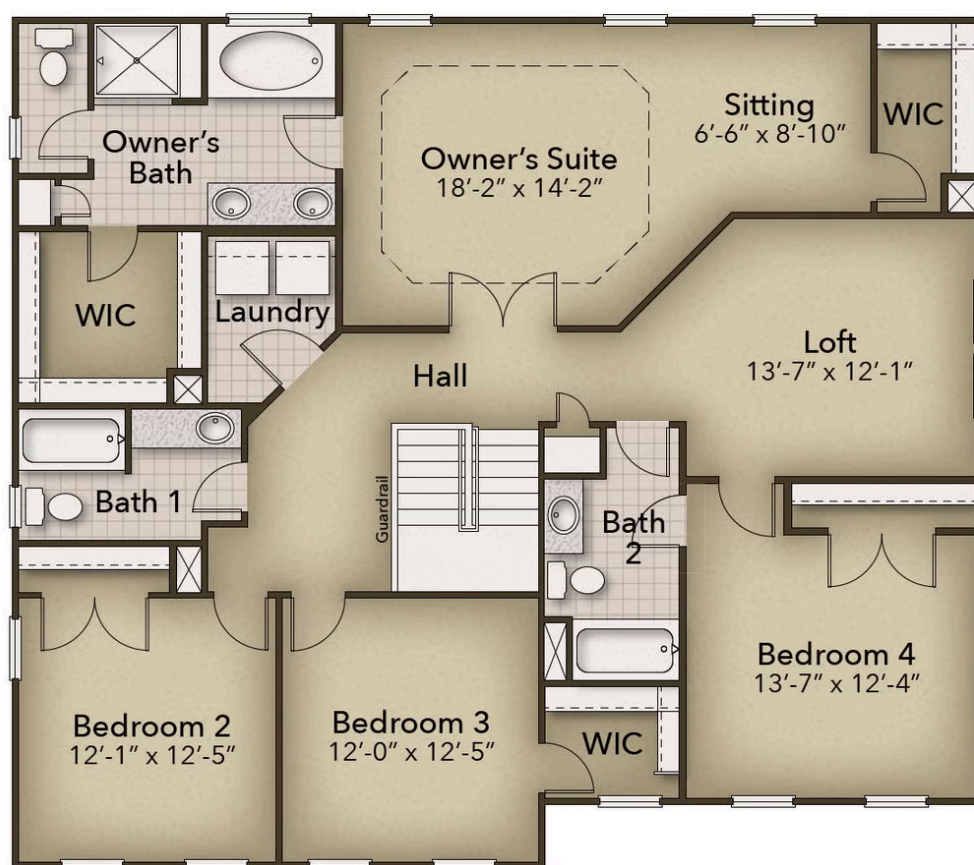


CONTACT US 757-550-2617

WWW.CESHOMES.COM



SECOND FLOOR



CONTACT US 757-550-2617

WWW.CESHOMES.COM

