



The Preserve at Lake Meade Community

The Roseleigh Floor Plan

Life is simply divine in The Roseleigh model. A whopping 3,000+ square feet of space results in a new home that's roomy enough for every member of the household. A buyer favorite, this home offers six bedrooms and four full baths. Downstairs holds the essential space your family needs plus formal living and dining rooms. The second level offers endless amounts of space for all. An Owner's Suite with dual closets and a spa-like Owner's Bath makes for the perfect space away from the hustle and bustle. Three additional bedrooms and a media room means there's enough room for every member of the family to have their own peaceful retreat.**Please call our Online Sales Consultants at 757-550-2617 to learn more!

\$658,900



6 Bedrooms



4.0 Bathrooms



3,333 Sq.Ft.



2 Stories



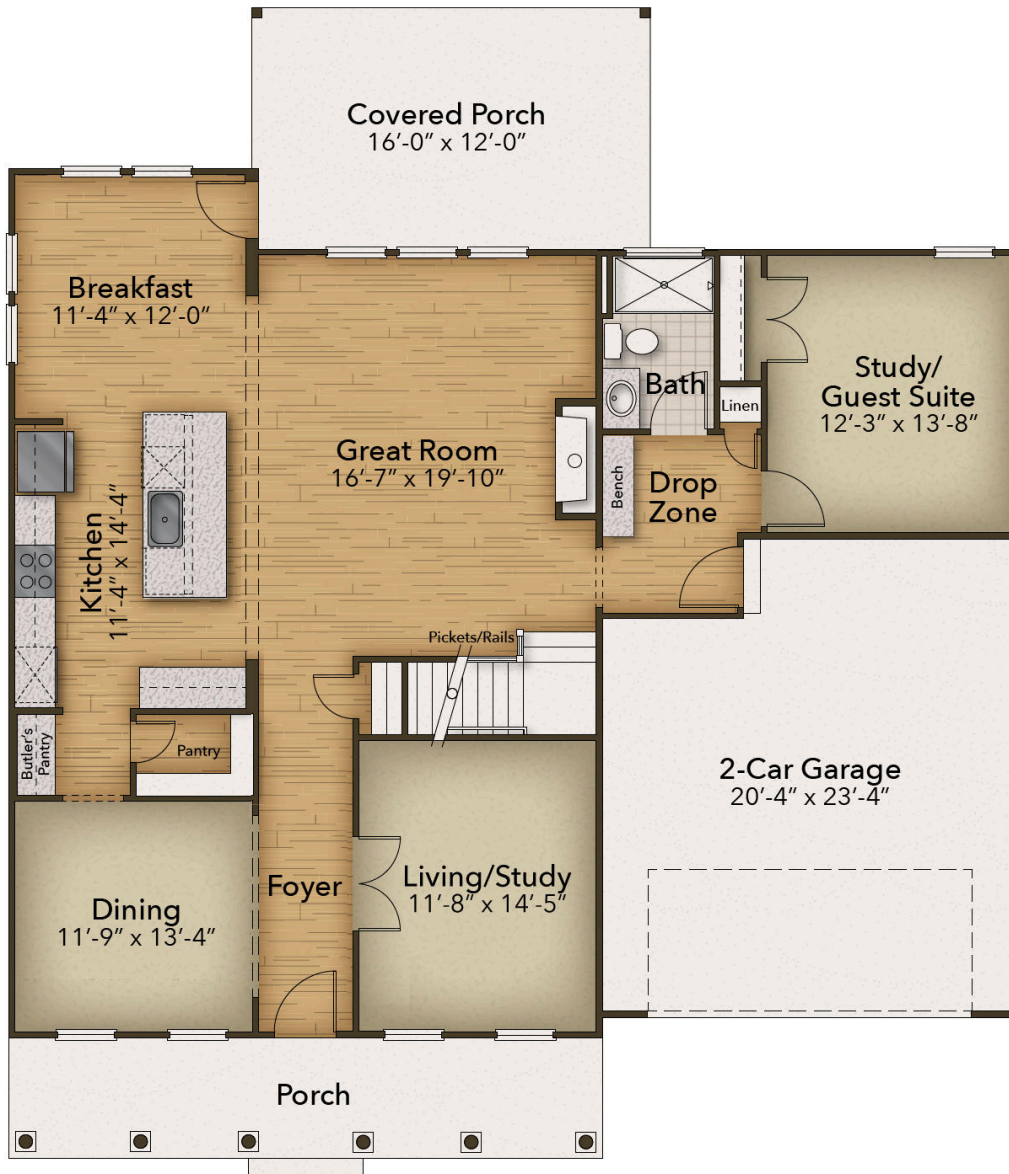
2 Car Garage

CONTACT US 757-550-2617

WWW.CESHOMES.COM



FIRST FLOOR



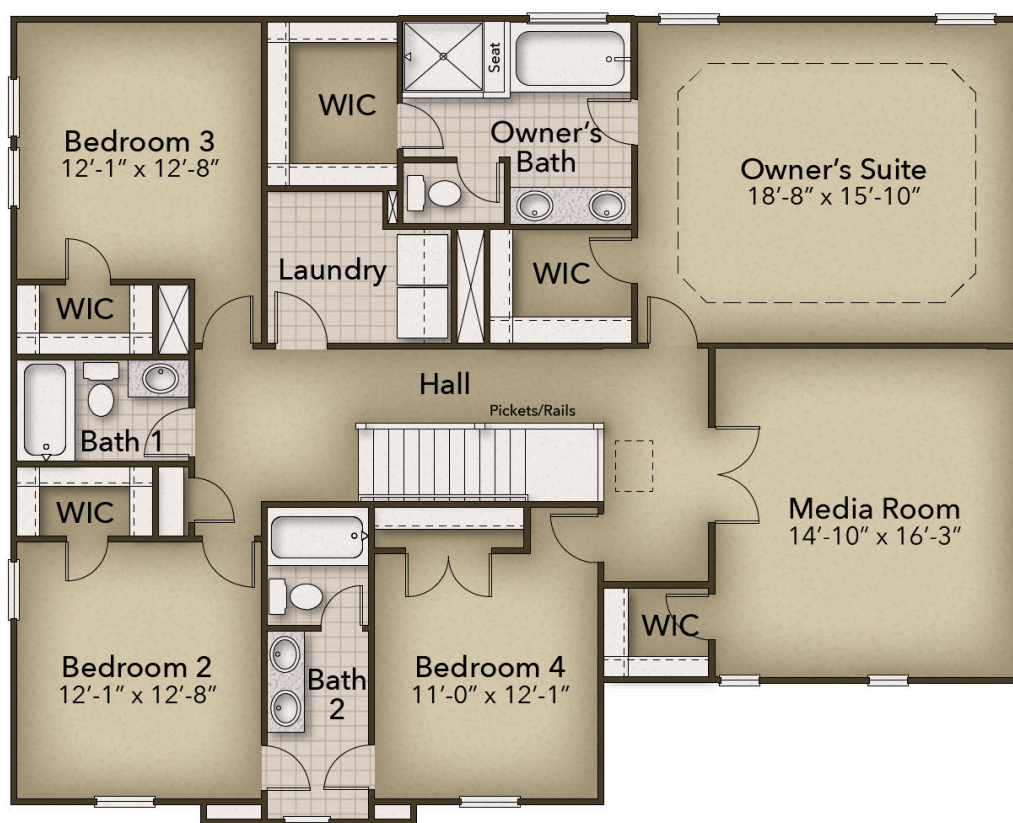
CONTACT US 757-550-2617

WWW.CHESHOMES.COM



Chesapeake Homes continuously improves home designs and reserves the right to modify home features and specifications without notice or obligation. Square footage and measurements are approximate. Renderings of elevations are artist's concepts. Floor plans vary per elevation. Chesapeake Homes standard features vary by home design and location, please refer to the included features sheet for the community to define specifications. This brochure is for illustrative purposes and not part of the legal contract. Please ask Sales Associate for complete details. © 2025 Chesapeake Homes. Current information as 20th May 2025

SECOND FLOOR



CONTACT US 757-550-2617

WWW.CHESHOMES.COM

