



Ashville Park Community

The Roseleigh II Floor Plan

The Roseleigh proves why this layout is a buyer favorite. The spacious 3,480 square-foot Roseleigh home offers more space, with five bedrooms and four full bathrooms. Inside the home, you will be amazed by the open floorplan connecting the great room, kitchen, and breakfast nook all together. This home is even more luxurious with a sunroom extension in the breakfast nook, a gourmet kitchen island, and built-in double ovens. Additionally, on the first floor is a study, a formal dining room, and a guest suite, with an upgraded full bathroom just off the guest Suite. The second level offers endless amounts of space for all. An Owner's Suite with tray ceilings, dual walk-in closets, and a deluxe spa-like bathroom makes for the perfect space away from the hustle and bustle. Three additional bedrooms, a Jack & Jill bathroom, hall bathroom, and a media room are also on the second floor, allowing enough room for every member of the family to have their own peaceful retreat. The Roseleigh was designed for entertaining, while allowing everyone to have their personal space. *Photos of Similar Home Shown**Please ...



5 Bedrooms



4.0 Bathrooms



3,480 Sq.Ft.



2 Stories



3 Car Garage

CONTACT US 757-550-2617

WWW.CHESHOMES.COM



69 FIRST FLOOR



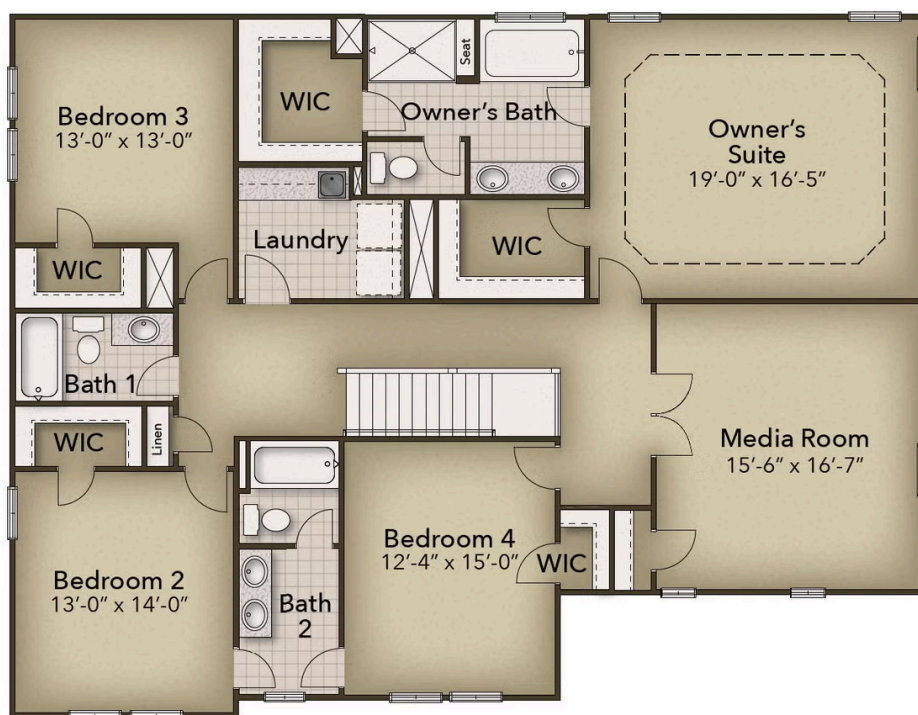
CONTACT US 757-550-2617

WWW.CHESHOMES.COM



Chesapeake Homes continuously improves home designs and reserves the right to modify home features and specifications without notice or obligation. Square footage and measurements are approximate. Renderings of elevations are artist's concepts. Floor plans vary per elevation. Chesapeake Homes standard features vary by home design and location, please refer to the included features sheet for the community to define specifications. This brochure is for illustrative purposes and not part of the legal contract. Please ask Sales Associate for complete details. © 2025 Chesapeake Homes. Current information as 22nd August 2025

69 SECOND FLOOR



CONTACT US 757-550-2617

WWW.CHESHOMES.COM



Chesapeake Homes continuously improves home designs and reserves the right to modify home features and specifications without notice or obligation. Square footage and measurements are approximate. Renderings of elevations are artist's concepts. Floor plans vary per elevation. Chesapeake Homes standard features vary by home design and location, please refer to the included features sheet for the community to define specifications. This brochure is for illustrative purposes and not part of the legal contract. Please ask Sales Associate for complete details. © 2025 Chesapeake Homes. Current information as 22nd August 2025