



## Ashville Park Community

### The Concord Floor Plan

Stunning doesn't even scratch the surface when talking about The Concord floorplan. Not an inch of the 3,734 square feet goes to waste in this home. This spacious home has various features that will have guests and families gasp as soon as they enter through your covered front porch. After coming in the door and just passing the spacious Zoom office, your eyes will see a wide-open floor plan that allows for the great room with a coffered ceiling, the kitchen, and the dining room to all be viewed from any corner. Cook away on your large gourmet kitchen island, snuggle by the fireplace, enjoy your covered back porch, or take an afternoon nap in the lavishly large owner's suite. With tray ceilings and a spa-like extended bathroom attached, you may not ever want to leave. That's not it for the first floor, though. A guest suite with a full bath and the laundry room are on the ground floor with a door attached to the Owner's Suite. Head upstairs to find a large, segmented loft that is equipped with a remote learning area, a game room, and a bonus room. Use ...

**\$1,289,052**



**4 Bedrooms**



**3.5 Bathrooms**



**3,734 Sq.Ft.**



**2 Stories**



**3 Car Garage**

**CONTACT US 757-550-2617**

**WWW.CESHOMES.COM**



## FIRST FLOOR

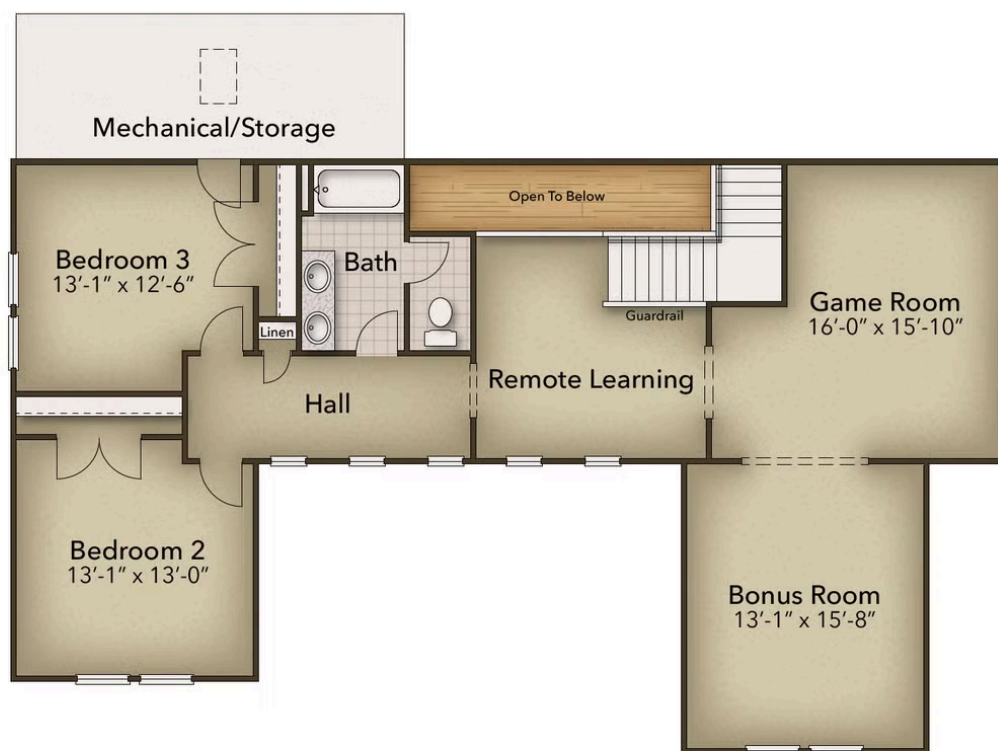


CONTACT US 757-550-2617

WWW.CHESHOMES.COM



## SECOND FLOOR



CONTACT US 757-550-2617

WWW.CESHOMES.COM

