



Ashville Park Community

The Roseleigh II Floor Plan

The Roseleigh II proves why this layout was a buyer favorite even before the newly revised plan. Now the spacious 3,500 square-foot Roseleigh II home offers more space, with five bedrooms and three bathrooms. A covered front porch makes this home feel welcoming right from the front door. Inside the home, you will be amazed by the open floor plan connecting the great room, breakfast nook, and kitchen with an upgraded gourmet island separating the space. Additionally, on the first floor is a study with double doors, a formal dining room with stunning coffered ceilings, a guest suite, and a full bathroom. The second level offers endless amounts of space for all. An Owner's Suite with dual closets and a deluxe spa-inspired Owner's Bath makes for the perfect space away from the hustle and bustle. Three additional bedrooms and media room means there's enough room for every member of the family to have their own peaceful retreat. *Photos of Similar Home Shown

\$1,222,193



5 Bedrooms



4.0 Bathrooms



3,496 Sq.Ft.



2 Stories



3 Car Garage

CONTACT US 757-550-2617

WWW.CESHOMES.COM



FIRST FLOOR

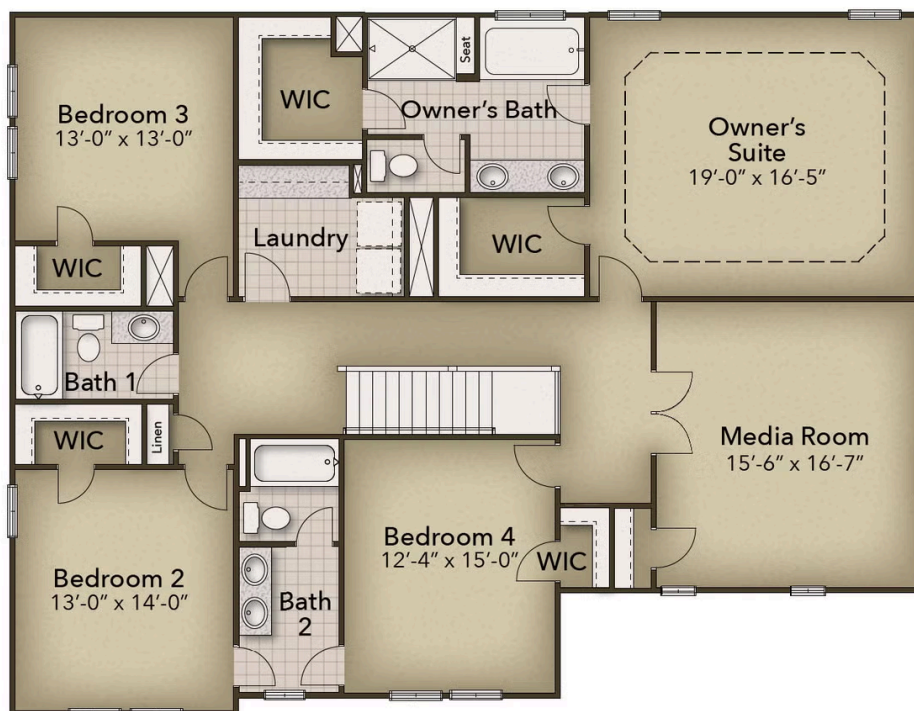


CONTACT US 757-550-2617

WWW.CESHOMES.COM



SECOND FLOOR



CONTACT US 757-550-2617

WWW.CESHOMES.COM

