



Ashville Park Community

The Bradford Floor Plan

\$1,699,900

From the moment you step onto the spacious front porch, The Bradford welcomes you with elegance and comfort. Just inside, a striking glass office creates the perfect work-from-home space, while the Drop Zone off the garage keeps daily life organized. The open-concept layout shines with natural light, seamlessly connecting a formal dining room, a luxurious kitchen with a large island, a full Culinary Artist kitchen, and a Caterer's Kitchen extension – offering the ideal setup for both everyday meals and elevated entertaining. From here, enjoy views into the expansive Great Room with a cozy fireplace, bringing warmth and connection to the heart of the home. Main-level living is at its finest with a private Owner's Suite, complete with a spa-inspired bathroom and oversized walk-in closet. Another bedroom and full bath downstairs offer space for guests or family, along with a laundry room and powder room for added convenience. Upstairs, three more bedrooms, two full baths, and a light-filled loft provide room to grow, relax, or entertain. And outside, the extended covered porch with a stone fireplace and a built-in saltwater pool creates your own backyard ...



5 Bedrooms



4.5 Bathrooms



3,669 Sq.Ft.



2 Stories



2 Car Garage

CONTACT US 757-550-2617

WWW.CESHOMES.COM



Chesapeake Homes continuously improves home designs and reserves the right to modify home features and specifications without notice or obligation. Square footage and measurements are approximate. Renderings of elevations are artist's concepts. Floor plans vary per elevation. Chesapeake Homes standard features vary by home design and location, please refer to the included features sheet for the community to define specifications. This brochure is for illustrative purposes and not part of the legal contract. Please ask Sales Associate for complete details. © 2025 Chesapeake Homes. Current information as 4th September 2025

FIRST FLOOR

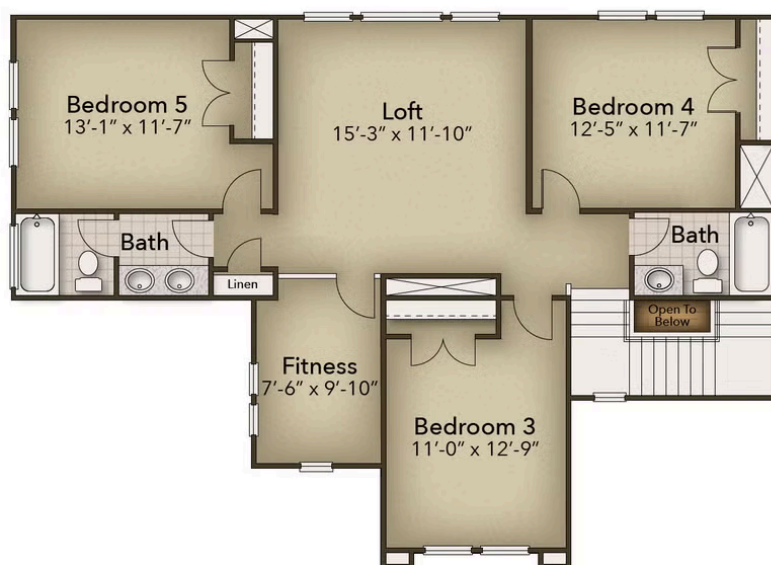


CONTACT US 757-550-2617

WWW.CESHOMES.COM



SECOND FLOOR



CONTACT US 757-550-2617

WWW.CHESHOMES.COM

