



Ashville Park Community

The Concord Floor Plan

\$1,326,786

Stunning doesn't even scratch the surface when talking about The Concord. Not an inch of the 3,626 square feet goes to waste in this home. This spacious home has various features that will have guests and families gasp as soon as they enter through your covered front porch. After coming in the door and just passing the spacious office, your eyes will see a wide-open floor plan that allows for the great room, the kitchen, and the dining room to all be viewed from any corner. Cook away on your large gourmet kitchen island, snuggle by the fireplace, enjoy your rear covered porch, or take an afternoon nap in the lavishly large owner's suite. With tray ceilings and a spa-inspired, extended deluxe bathroom attached, you may not ever want to leave. The laundry room is on the first floor and is connected through the Owner's Suite bathroom for easy access. That's not it for the first floor though, A guest suite and full bath are also located on this floor. Head upstairs to find a large...



4 Bedrooms



3.5 Bathrooms



3,626 Sq.Ft.



2 Stories



3 Car Garage

CONTACT US 757-550-2617

WWW.CESHOMES.COM



FIRST FLOOR

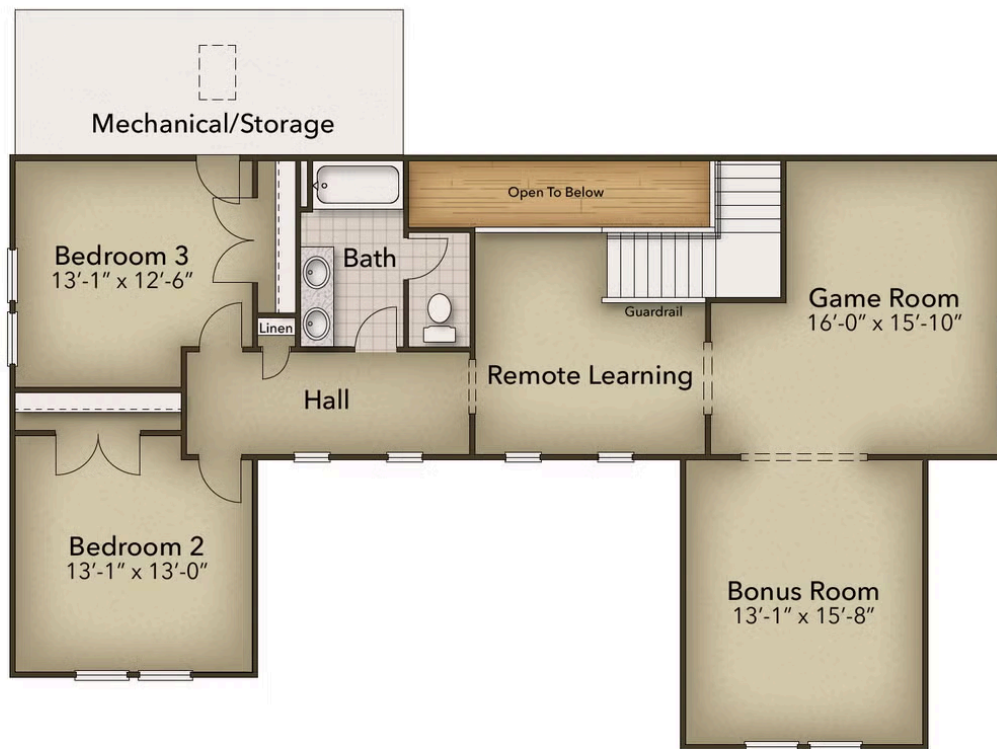


CONTACT US 757-550-2617

WWW.CESHOMES.COM



SECOND FLOOR



CONTACT US 757-550-2617

WWW.CESHOMES.COM

